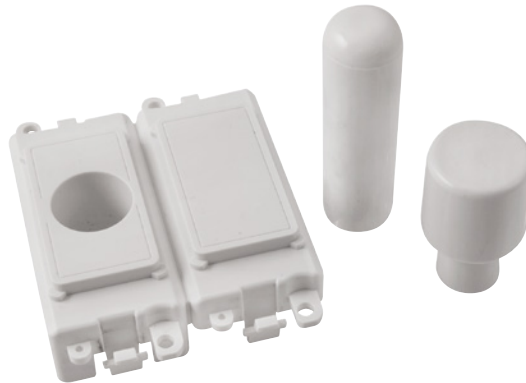


# Technical Specification

**Product Code:** GM150PW

**Description:** 2 Module Dimmer Mounting Kit



## General Information

<b>Dimensions</b>	49mm (W) x 50mm (H)
<b>Aperture Dimensions</b>	20mm (W) x 35mm (H) x 2
<b>Module Frame Finish</b>	Polar White
<b>Module &amp; Control Button Finish</b>	Polar White
<b>Materials</b>	Body & Insert: Nylon Control Button: Nylon
<b>Back Box Depth</b>	47mm
<b>Operational Temperature</b>	-5°C to +40°C
<b>Warranty</b>	10 Years

**Standards** BS 5733: 2010

## Additional Information

Ensure that the mains supply is isolated before commencing installation and refer to the circuit diagram with the relevant product.  
Bare earth cables must always be covered with appropriate sleeving and wired to the earth terminal.

## Interchangeable Modules

- MD9014: 100W Dual Mode LED Dimmer Module
- MD9001: 6A Push ON/OFF (Dummy Dimmer / Non Dimmable) Module
- MD9010: 1-10V Analogue Rotary Dimmer Module
- MD9022: 40-250W Leading Edge Dimmer Module
- MD9042: 60-400W Leading Edge Dimmer Module