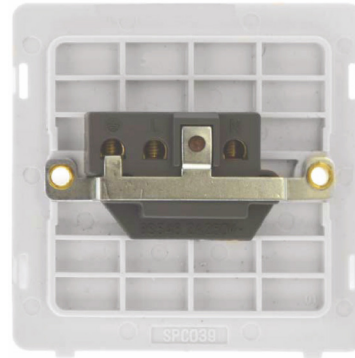
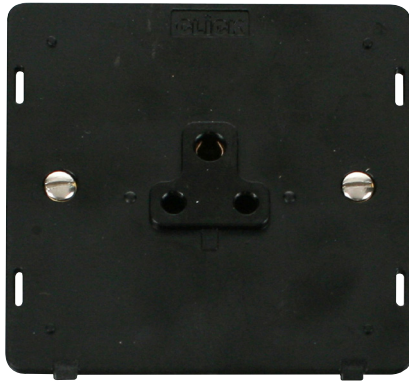


Product Code: SIN039BK

Description: 2A Round Pin Socket Outlet Insert



General Information

Dimensions	82.5mm (W) x 82.5mm (H) x 2.5mm (D)
Insert Finish	Black Insert
Cover Plate Finishes Available	BS (Brushed Stainless), CH (Polished Chrome), SS (Stainless Steel), BK (Matt Black) & PW (Polar White)
Materials	Insert: Polycarbonate Rear Housing: Nylon Terminals: Brass Terminal Screws: Steel & Yellow Passivated Internal Busbars: Formed Pressed Brass Earth Strap: Mild Steel
Maximum Voltage	250V~ 50Hz
Load Rating	2A
Plate Fixing Centres	60.3mm
Terminal Size	5mmø
Terminal Torque	0.5Nm
Terminal Capacity	3 x 1.5mm ²
Switched	No
Twin Earth Terminals	No
Ingress Protection	IP20
Back Box Depth	35mm Minimum
Termination Type	Screw
Operational Temperature	-5°C to +40°C
Warranty	10 Years
Standards	BS 546: 1950

Additional Information

Ensure that the mains supply is isolated before commencing installation and refer to the circuit diagram with the relevant product.
Bare earth cables must always be covered with appropriate sleeving and wired to the earth terminal.

Product Code: SIN039BK

Description: 2A Round Pin Socket Outlet Insert

Compatible Cover Plates

Plate Dimensions	86mm (W) x 86mm (H) x 4mm (D)
Cover Plate Finishes Available	BS (Brushed Stainless), CH (Polished Chrome), SS (Stainless Steel), BK (Matt Black) & PW (Polar White)
Materials:	Decorative: Stainless Steel, Black & Polar White: Polycarbonate



SCP239BS



SCP239CH



SCP239SS



SCP239BK



SCP239PW