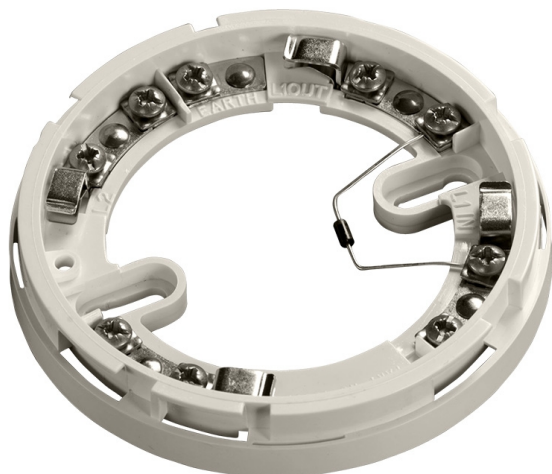


Apollo Series 65 base with diode

Part No. **45681-201APO**



Overview

Compatible with all Apollo Series 65 detectors.

Designed for use with conventional systems that have manual call points and detector bases on the same circuit.

Third-party certified to the relevant parts of EN54 in conjunction with Apollo's Series 65 detectors.

Fitted with a schottky diode on the L1 IN and L1 OUT wiring terminals.

One way fit.

Technical Specifications

Approvals/certifications	Certified to the relevant parts of EN54 by the LPCB as part of Apollo's Series 65 range.
Application/operation	TBC.
Alarm reset voltage	TBC.
Construction & finish	White polycarbonate V.O in accordance with UL94. Nickel plated stainless steel terminals.
IP Rating	IP23D.
Dimensions	100mm diameter x H 15mm.
Weight	48g.



T 01942 322744 E sales@c-tec.co.uk
F 01942 829867 W www.c-tec.com



C-TEC, Challenge Way, Martland Park, Wigan, WN5 0LD United Kingdom