

STANDARD TRUNKING SYSTEMS



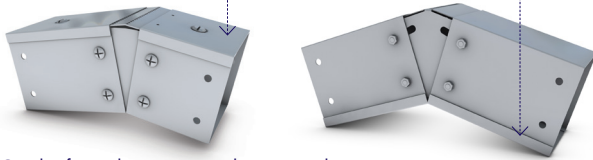
Adjustable Bends (Vertical) 0-35° Angle

VAB/SIZE

External lid

BAB/SIZE

Internal lid

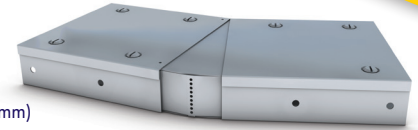


Can be formed as an internal or external joint.
Code eg: VAB22 (Adjustable Bend 50x50mm)

Adjustable Bends (Horizontal) 0-35° Angle

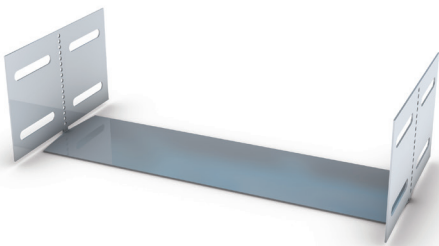
HAB/SIZE

Code eg: HAB22
(Adjustable Bend 50x50mm)



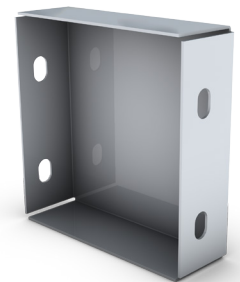
Adjustable Lengths Coupler 0-15° Angle

Ref.TAC



Blank End

- Ref. BE22 50mm x 50mm
- Ref. BE33 75mm x 75mm
- Ref. BE42 100mm x 50mm
- Ref. BE44 100mm x 100mm
- Ref. BE66 150mm x 150mm

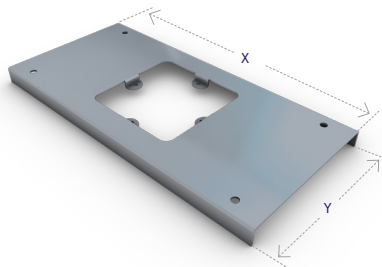


Socket Outlet Single

Ref.STL1

Code	X	Y
4	230	110
6	230	160

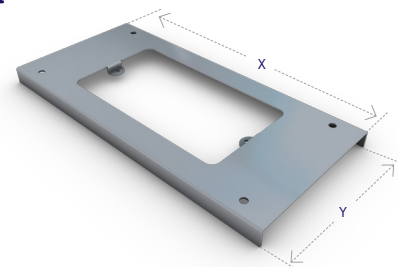
Can be supply with off centre cutouts



Socket Outlet Double

Ref.STL2

Code	X	Y
4	230	110
6	230	160



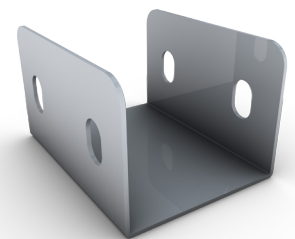
Cable Support

- Ref. CS22 50mm x 50mm
- Ref. CS33 75mm x 75mm
- Ref. CS42 100mm x 50mm
- Ref. CS44 100mm x 100mm
- Ref. CS66 150mm x 150mm



Trunking Coupling

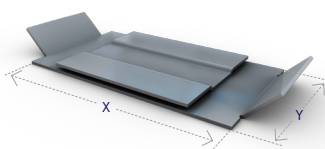
- Ref. TC22 50mm x 50mm
- Ref. TC33 75mm x 75mm
- Ref. TC42 100mm x 50mm
- Ref. TC44 100mm x 100mm
- Ref. TC66 150mm x 150mm



Fire Barrier Clip

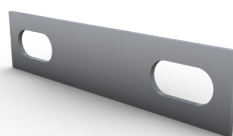
Ref.FB

Code	Y
2	41
3	60
4	85
6	137



Earth Link

- Ref.CES (Plain Copper)
- Ref.TCES (Tinned Copper)



Distribution Board Trunking

Ref.TKDB



Trunking no longer requires cutting on site. Size manufactured to customer requirements, saving installation time.

Multi Compartment Trunking

Lighting Trunking

Uniklip Cable Tray

Speedway Cable Ladder

Cable Basket Systems

Channel & Support

Floor Trunking

Bench Outlet & Perimeter Trunking

Steel Conduit (Class 4)

Innovative Design Solutions

Accessories & Supports

Index