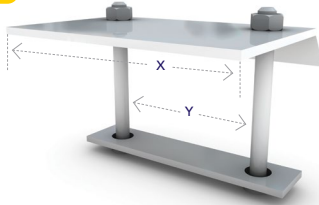


### Beam Clamp A

Ref.BCA22 50mm x 50mm

Code	X	Y
22	90	60

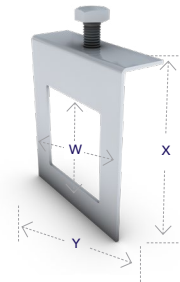


### Window Beam Clamp

Ref.WBC22 50mm x 50mm

Code	X	Y	W
22	90	103	50

C/W M10 x 40 CPB (Bolt).



### Galvanised Steel Lid

Ref.GSL

Code	W
2	50
3	75
4	100
6	150
8	200
9	225
12	300



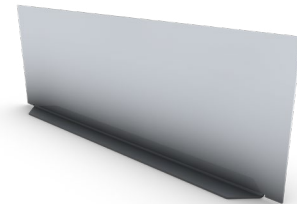
Supplied in 3 metre lengths.

### Dividing Fillets

Ref.DF

Code	W
2	50
3	75
4	100
6	150

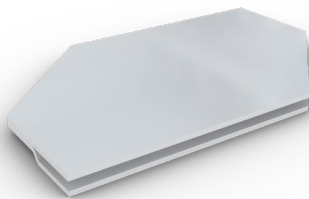
Supplied in 3 metre lengths.



### Metal Retaining Strap

Ref.CR

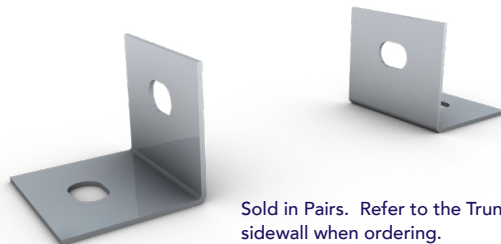
Code	W
2	50
3	75
4	100
6	150



### Flanged Coupling

Ref.FC

Code
22
33
44
66



Sold in Pairs. Refer to the Trunking sidewall when ordering. (Example TK42 use FC22)

### Plastic Cable Retaining Strap

Ref. CR2/3 50mm x 75mm

Ref. CR4/6 100mm x 150mm

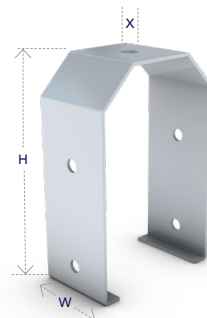


### Hanger Bracket

Ref.HBL(x)

Code	H	W	X	X
22	85	55	10	20
33	135	85	10	20
44	165	115	10	20
66	245	165	10	20

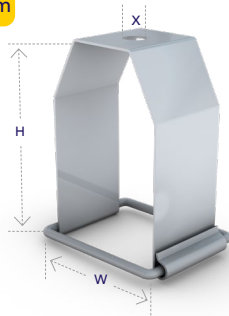
Other sizes available on request.



### Hanger Bracket (with Swing Bar)

Ref.HBL22SP(x) 50mm x 50mm

Code	W	H	X	X
22	55	85	10	20

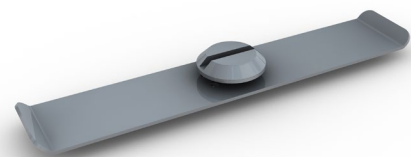


### Lid Fastener

Ref.LCS2 50mm

Ref.LCS3 75mm

Ref.LCS4 100mm



Available to suit 50mm, 75mm or 100mm widths. Note: For sizes over 100mm use LCS2 x2.