

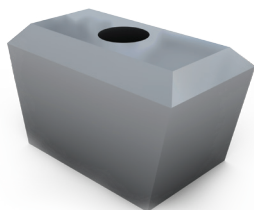


## ACCESSORIES

### Wedge Nut

Ref.	Thread Size
M6WN	M6
M8WN	M8
M10WN	M10
M12WN	M12

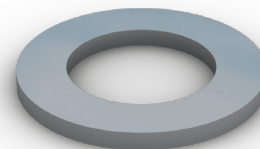
Sold in 100's.



### Flat Washers

Ref.	Thread Size
M6FW	M6
M8FW	M8
M10FW	M10
M12FW	M12

Sold in 100's.



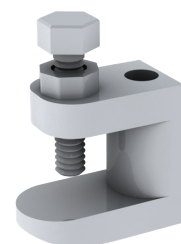
### Anchor Setting Tool

- Ref.M6ST
- Ref.M8ST
- Ref.M10ST
- Ref.M12ST



### Beam Clamp

Ref.	Thread/Hole Size
FC6T	M6 Threaded
FC8T	M8 Threaded
FC10T	M10 Threaded
FC11	11mm Plain Hole Max girder width for bolting 19mm
FC13	13mm Plain Hole Max girder width for bolting 23mm



### Hex Head Set Screws

Thread Size	Thread Size						Pack Qty	Ref.
	20	25	30	35	40	-		
M6	20	25	30	35	40	-	100	M6 X SIZE HS
M8	20	25	30	35	40	-	100	M8 X SIZE HS
M10	20	25	30	35	40	50	100	M10 X SIZE HS
M12	20	25	30	35	40	50	100	M12 X SIZE HS

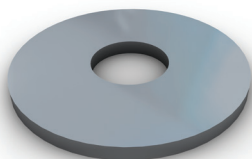
Unitrunk stock a large range of set screws in thread sizes M6, M8, M10 and M12. Popular lengths range from 20mm to 40mm long and are stocked at all our distribution centres.



### Mudguard Washers

Ref.	Size
M6MW	M6
M8MW	M8
M10MW	M10
M12MW	M12

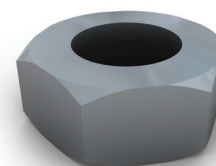
Sold in 100's.



### Full Hexagonal Nuts

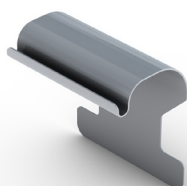
Ref.	Thread Size
M6HN	M6
M8HN	M8
M10HN	M10
M12HN	M12

Sold in 100's.



### Tray to Channel Klip

- Ref. CHTR 25 (KLMR)
- Ref. CHTR 50 (KLHR)



### Basket to Channel Klip

- Ref. UFC41M

