

INDUSTRIAL VULCAN LED CORROSION PROOF



VULCAN LED CORROSION PROOF, 5FT & 6FT

- Suitable for workshops, garages, warehouses, car parks, farm buildings, wet areas
- Complete with stainless steel anti-corrosion clips
- Wide operating ambient temperature range of -25 °C to +40 °C
- Emergency version available with 3 hour emergency duration
- 1-10V dimmable and integral Microwave Sensor options available
- Emergency spacing details in back section of catalogue
- Complies with requirements of the Energy Technology Criteria List. Enhanced Capital Allowances may be claimed on the cost of the luminaires, installation and transport to site

ACCESSORIES

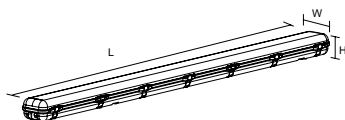
RVUDMB	VULCAN Stainless Steel Double Mounting Bracket
R360PIR-01	PIR Sensor for linear fittings
R360RC-01	Remote control/programmer for PIR Sensor

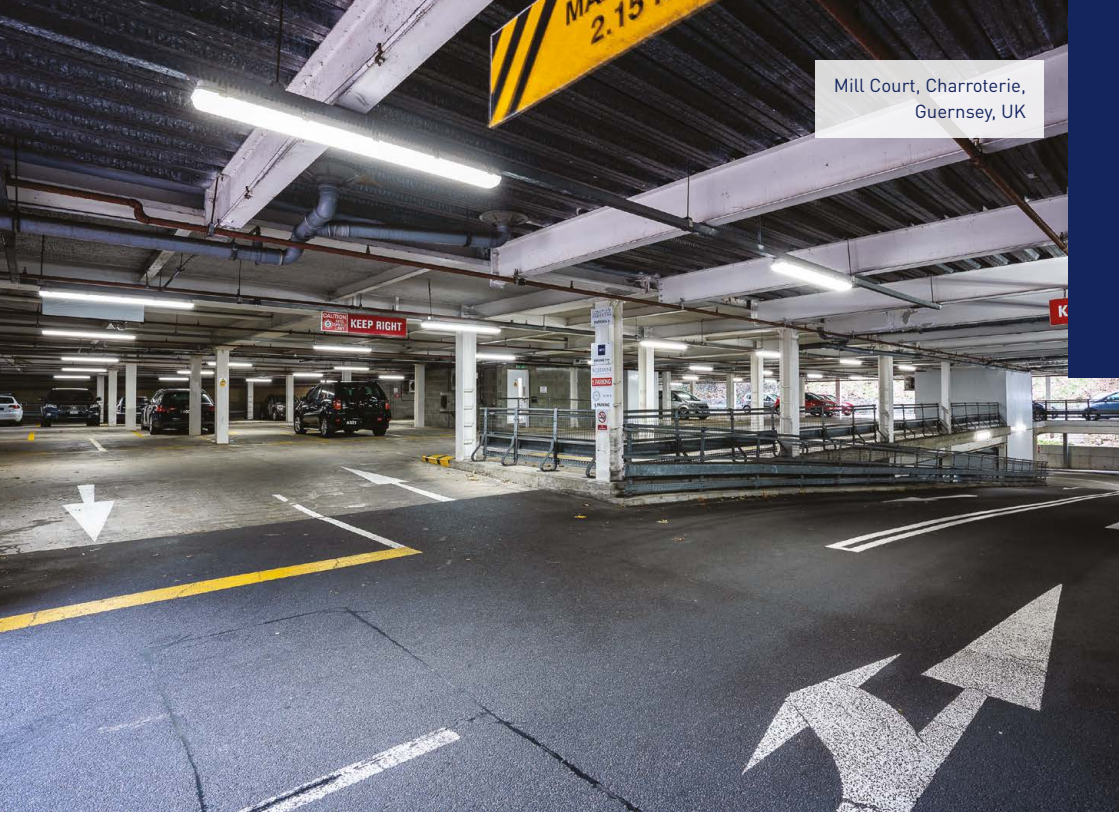


CONVERSIONS AVAILABLE

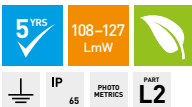


DIMENSIONS(mm)	Width	Length	Height
RVUF486FT-24	93	1,835	97
RVUF966FT-24	140	1,835	97
RVUF405FT-24	93	1,560	97
RVUF805FT-24	140	1,560	97





	Single	Double	Single	Double
	1.5M	1.5M	1.8M	1.8M
Cool White	1 x 40W	2 x 40W	1 x 48W	2 x 48W
Standard	RVUF405FT-24	RVUF805FT-24	RVUF486FT-24	RVUF966FT-24
Emergency	RVUF405FTE-24	RVUF805FTE-24	RVUF486FT-24E	RVUF966FT-24E
Comparable to:	1 x 58W T8	2 x 58W T8	1 x 70W T8	2 x 70W T8
Total Power (W):	39.6	78.7	46	93.2
Total Light Output (lm):	4,490 standard 330 emergency	8,480 standard 330 emergency	5,850 standard 380 emergency	11,410 standard 360 emergency
Efficacy (lm/cctW):	113	108	127	123
Lifetime (hrs):	50,000	50,000	50,000	50,000
Beam Angle (deg):	115	115	115	115
Lux at 1m (lux):	1,390	2,760	1,870	3,970
CCT (K):	5000	5000	5000	5000
CRI (Ra):	80	80	80	80
Power Factor (PF):	0.97	0.97	0.97	0.97
Impact Rating (IK):	08	08	08	08
Box Qty:	1	1	1	1
Weight (kg):	2.5	3.5	2.7	3.8



ECA eligible
SEAI approved