



Available finish:- Stainless Steel

**Read these instructions before commencing installation & retain them for future reference.**

**IP44** **CE** **0.5m** **240V 2x 35W Max.**

**These fittings are Class I and must be Earthed**

**Important Information**

It is recommended that luminaires are installed and fitted by a qualified electrician ensuring the installation complies with current IEE wiring regulations & local building control. These products are designed for connection to a 240V 50Hz supply. Any broken or damaged parts should be replaced as soon as possible. KSR will not accept responsibility for any claims arising from a poor installation.

**Important User Advice**

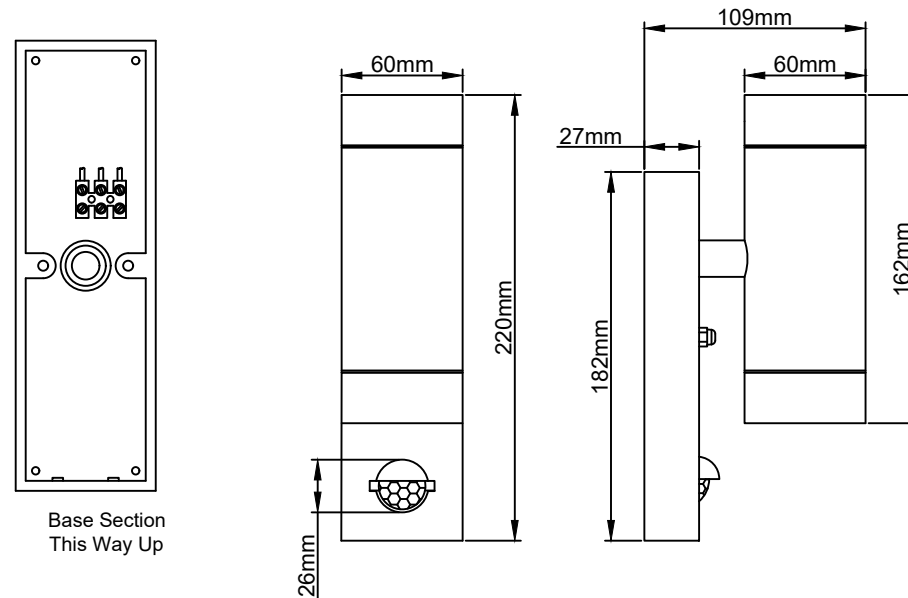
Always switch off mains supply before servicing, fitting or replacing lamps. Always check the lamp is correct for the application, including its voltage and wattage. Ensure the lamp is correctly located in the lampholder.

**General Maintenance**

General maintenance and cleaning should be performed at least quarterly. Clean product outer using a damp cloth, dried and buffed to a shine. As a raw finished material atmospheric deposits may build up on the surface, this can be cleaned off to return the product to it's original look. After any maintenance or lamp replacement, remember to check all seals are intact.

**Installation Procedure**

Familiarize yourself with the luminaire, remove the two chrome dome nuts that secure the main fitting to the mounting plate. Set aside the dome nuts. Offer the base plate up to a suitable surface and mark the four fixing points, ensuring the drain holes at the bottom of the plate. Once drilled, dress the mains supply cable through the grommet and secure to the wall. Terminate the mains supply into the terminal block, following the markings on the fitting. Ensure the main gasket is seated correctly on the base plate and place the fitting onto it, refit and tighten the dome nuts. Remove the caps and fit GU10 lamps, if using GU10 LED lamps ensure they are suitable for enclosed housings. Refit the caps, please check they are secure to ensure a good seal. Flip the small hood on the PIR down to access the PIR settings, adjust the Time, Sensitivity, and Lux to suit, close the hood. Turn on the power and test the luminaire.

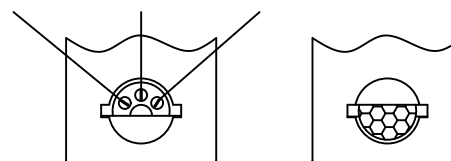


Base Section  
This Way Up

PIR Settings

Switch Time - 12 Sec to 4 Minutes  
Range - 9M when mounted at 4M  
Viewing Angle - 110°  
Minimum On Lux - 9 Lux

Time Adjust    Sensitivity    Lux Level

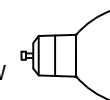


**PIR Set Up  
Hood Down**

**Set for Use  
Hood Up**

**Lamp Details**

Lamp Cap: GU10  
Max Wattage: 35W



Suitable for Retrofit LED Lamps



KSR Lighting Aftersales: 023 92 674343  
E-mail: aftersales@ksrlighting.com