

Concealed Fixing Accessories on Stylish Slim Plates

Slim and stylish with soft rounded edges, the Hartland CFX® range helps provide the finishing touch to any project. The face plates are firmly held in place to the back frame with a patented 4 point clipping system, concealing the fixings for a seamless finish.

- Six superb finishes
- Choice of complementary switch insert finishes
- Concealed fixing
- Comprehensive range of electrical accessories
- Grid Fix and Euro Fix options are also available (see separate GRID-IT and EuroFix sections)



77C R22 BC-B



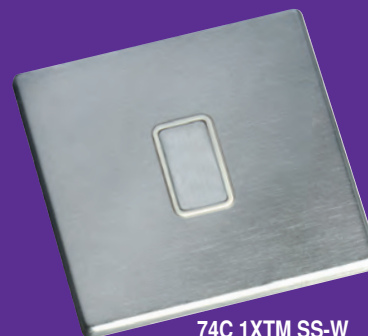
71C R23 PB-W



72C T22



79C DPN AB-B



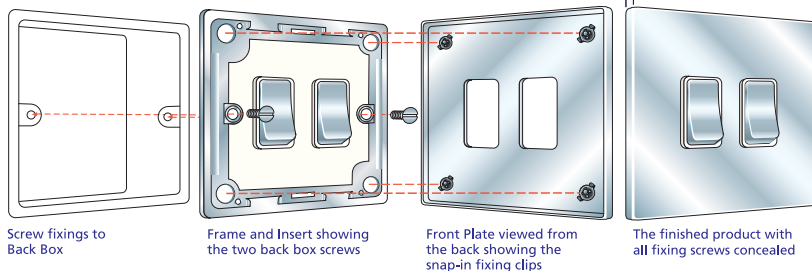
74C 1XTM SS-W



78C SPN BK-B

Hamilton Hartland CFX® Concealed Fixing

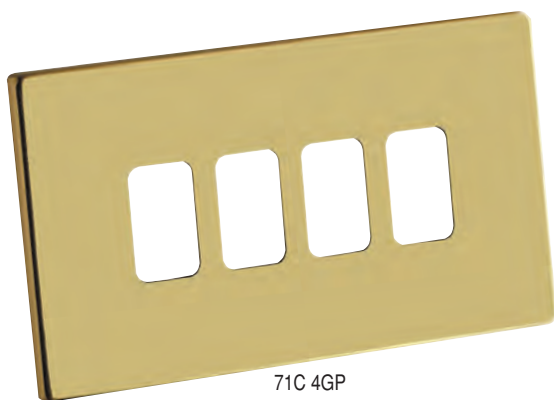
Plate depth 5 mm including gasket



Hamilton® Hartland CFX®

Concealed Fixing GRID-IT Grid Fix Plates complete with Fixing Grid

Minimum Wall Box Depth dependant on GRID-IT insert fitted - please see the GRID-IT section for our complete range of inserts.



1 gang Aperture Grid Fix Plate

Nominal Plate Size: 86 x 86 mm

Technical Insert Reference: **1GP**

Product Code



2 gang Aperture Grid Fix Plate

Nominal Plate Size: 86 x 86 mm

Technical Insert Reference: **2GP**

Product Code



3 gang Aperture Grid Fix Plate

Nominal Plate Size: 145 x 86 mm

Technical Insert Reference: **3GP**

Product Code



4 gang Aperture Grid Fix Plate

Nominal Plate Size: 145 x 86 mm

Technical Insert Reference: **4GP**

Product Code

Plate Finish

Bright Chrome



77C 1GP

77C 2GP

77C 3GP

77C 4GP

Polished Brass



71C 1GP

71C 2GP

71C 3GP

71C 4GP

Satin Brass



72C 1GP

72C 2GP

72C 3GP

72C 4GP

Antique Brass



79C 1GP

79C 2GP

79C 3GP

79C 4GP

Satin Stainless Effect



74C 1GP

74C 2GP

74C 3GP

74C 4GP

Black Nickel



78C 1GP

78C 2GP

78C 3GP

78C 4GP

Spare Grids complete with Gasket



1 gang Grid with Gasket

Nominal Grid Size: 86 x 86 mm

Technical Insert Reference: **7C1G**

Product Code

7C 1G



2 gang Grid with Gasket

Nominal Grid Size: 86 x 86 mm

Technical Insert Reference: **7C2G**

Product Code

7C 2G



3 gang Grid with Gasket

Nominal Grid Size: 145 x 86 mm

Technical Insert Reference: **7C3G**

Product Code

7C 3G



4 gang Grid with Gasket

Nominal Grid Size: 145 x 86 mm

Technical Insert Reference: **7C4G**

Product Code

7C 4G