

Hamilton® White Plastic

Quality BOX FIX Dimmers on stylish White Plastic Plates

A range of economy accessories on White Plastic plates to complement today's interiors.

- Clean, stylish and ideal for the nursery
- Standard Box-Fix Push On/Off Dimmers



KP1X40



KP2X2V

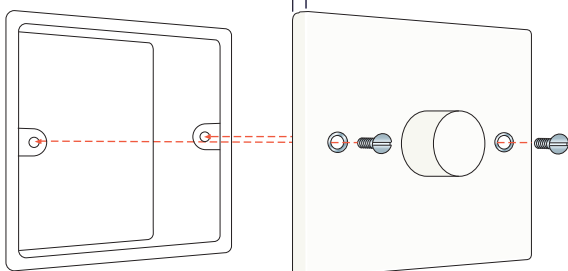


KP1X2V



KP4XPS

White Plastic Dimmers ▶ Plate depth 6 mm



Box-Fix to Back Box

Hamilton® *fashion, finish, function and flexibility*

Hamilton® White Plastic

Push On/Off Resistive Dimmers

Note: Tungsten filament GU10 lamps must be branded and with a fused base.
 Note: When using mains voltage halogen lamps - dimmers should be de-rated by 25%.
 Note: When dimming LED lamps de-rate by 75% - please contact our Technical Department for compatibility.



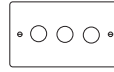
KP1X40



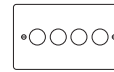
1 gang 400W 2 way Dimmer
 Nom. Plate Size: 86 x 86 mm
 Min. Wall Box Depth: 35 mm
 Technical Insert Reference: **1X40**
Product Code



2 gang 400W 2 way (Max. 300 watts per gang) Dimmer
 Nom. Plate Size: 86 x 86 mm
 Min. Wall Box Depth: 35 mm
 Technical Insert Reference: **2X40**
Product Code



3 gang 400W 2 way (Max. 300 watts per gang) Dimmer
 Nom. Plate Size: 146 x 86 mm
 Min. Wall Box Depth: 35 mm
 Technical Insert Reference: **P3X40**
Product Code



4 gang 400W 2 way (Max. 250 watts per gang) Dimmer
 Nom. Plate Size: 146 x 86 mm
 Min. Wall Box Depth: 35 mm
 Technical Insert Reference: **P4X40**
Product Code



1 gang 600W 2 way Dimmer
 Nom. Plate Size: 86 x 86 mm
 Min. Wall Box Depth: 35 mm
 Technical Insert Reference: **1X60**
Product Code

Plate Finish	Insert Finish
White Plastic	White Plastic

KP1X40	KP2X40	KP3X40	KP4X40	KP1X60
--------	--------	--------	--------	--------

Push On/Off Inductive Dimmers

Note: When dimming LED lamps de-rate by 75% - please contact our Technical Department for compatibility.



KP2X2V



1 gang 200W 2 way Dimmer
 Nom. Plate Size: 86 x 86 mm
 Min. Wall Box Depth: 35 mm
 Technical Insert Reference: **1X2V**
Product Code



2 gang 200W 2 way Dimmer
 Nom. Plate Size: 86 x 86 mm
 Min. Wall Box Depth: 35 mm
 Technical Insert Reference: **2X2V**
Product Code



1 gang 300W 2 way Dimmer
 Nom. Plate Size: 86 x 86 mm
 Min. Wall Box Depth: 35 mm
 Technical Insert Reference: **1X3V**
Product Code

Plate Finish	Insert Finish
White Plastic	White Plastic

KP1X2V	KP2X2V	KP1X3V
--------	--------	--------

Push On/Off Resistive Grid Dimmer Modules

Note: Tungsten filament GU10 lamps must be branded and with a fused base.
 Note: When using mains voltage halogen lamps - dimmers should be de-rated by 25%.
 Note: When dimming LED lamps de-rate by 75% - please contact our Technical Department for compatibility.



GRIDIM400

1 gang 400W 2 way Push On/Off Dimmer
 Complete with Module, Grid Tree, Polished Brass and Satin Chrome Knob
 Min. Wall Box Depth: 35 mm
 Technical Insert Reference: **D40**
Product Code

Economy 1 gang 400W 2 way Push On/Off Dimmer
 Complete with Module, Grid Tree and Plastic White Chrome Knob
 Min. Wall Box Depth: 35 mm
 Technical Insert Reference: **D40**
Product Code

Insert Finish
White Plastic

GRIDIM400	MODDIM400
-----------	-----------

Push On/Off Inductive Grid Dimmer Modules

Note: When dimming LED lamps de-rate by 75% - please contact our Technical Department for compatibility.



GRIDIM200VA

1 gang 200VA 2 way Push On/Off Dimmer
 Complete with Module, Grid Tree, Polished Brass and Satin Chrome Knob
 Min. Wall Box Depth: 35 mm
 Technical Insert Reference: **D2V**
Product Code

Economy 1 gang 200VA 2 way Push On/Off Dimmer
 Complete with Module, Grid Tree and Plastic White Chrome Knob
 Min. Wall Box Depth: 35 mm
 Technical Insert Reference: **D2V**
Product Code

Insert Finish
White Plastic

GRIDIM200VA	MODDIM200VA
-------------	-------------

Push On/Off Switches



KP4XPS



1 gang 5A Push On/Off
 Nom. Plate Size: 86 x 86 mm
 Min. Wall Box Depth: 35 mm
 Technical Insert Reference: **1X5A**
Product Code



2 gang 5A Push On/Off
 Nom. Plate Size: 86 x 86 mm
 Min. Wall Box Depth: 35 mm
 Technical Insert Reference: **2X5A**
Product Code



3 gang 5A Push On/Off
 Nom. Plate Size: 146 x 86 mm
 Min. Wall Box Depth: 35 mm
 Technical Insert Reference: **3X5A**
Product Code



4 gang 5A Push On/Off
 Nom. Plate Size: 146 x 86 mm
 Min. Wall Box Depth: 35 mm
 Technical Insert Reference: **4X5A**
Product Code

Plate Finish	Insert Finish
White Plastic	White Plastic

KP1XPS	KP2XPS	KP3XPS	KP4XPS
--------	--------	--------	--------