

Concealed Fixing Accessories on Stylish Slim Plates

Slim and stylish with soft rounded edges, the Hartland CFX® range helps provide the finishing touch to any project. The face plates are firmly held in place to the back frame with a patented 4 point clipping system, concealing the fixings for a seamless finish.

- Six superb finishes
- Choice of complementary switch insert finishes
- Concealed fixing
- Comprehensive range of electrical accessories
- Grid Fix and Euro Fix options are also available (see separate GRID-IT and EuroFix sections)



77C R22 BC-B



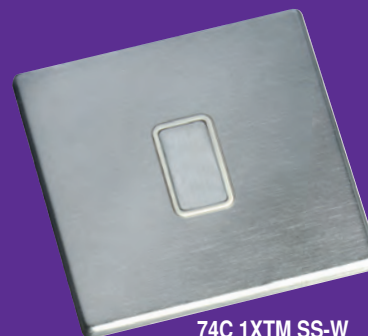
71C R23 PB-W



72C T22



79C DPN AB-B



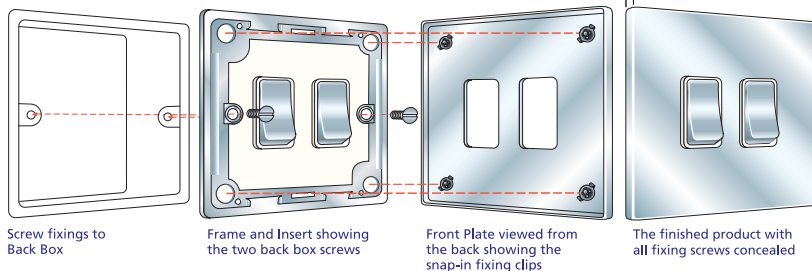
74C 1XTM SS-W



78C SPN BK-B

Hamilton Hartland CFX® Concealed Fixing

Plate depth 5 mm including gasket



Concealed Fixing Rocker Switches



77C R26 BC-W



**1 gang 10AX
2 way Rocker**

Nominal Plate Size:
86 x 86 mm

Min. Wall Box
Depth: 25 mm

Technical Insert
Reference: **R21**
Product Code



**2 gang 10AX
2 way Rocker**

Nominal Plate Size:
86 x 86 mm

Min. Wall Box
Depth: 25 mm

Technical Insert
Reference: **R22**
Product Code



**3 gang 10AX
2 way Rocker**

Nominal Plate Size:
86 x 86 mm

Min. Wall Box
Depth: 25 mm

Technical Insert
Reference: **R23**
Product Code



**4 gang 10AX
2 way Rocker**

Nominal Plate Size:
145 x 86 mm

Min. Wall Box
Depth: 25 mm

Technical Insert
Reference: **R24**
Product Code



**6 gang 10AX
2 way Rocker**

Nominal Plate Size:
145 x 86 mm

Min. Wall Box
Depth: 25 mm

Technical Insert
Reference: **R26**
Product Code

Plate Finish	Insert Finish	Insert Surround Colour	1 gang 10AX 2 way Rocker Nominal Plate Size: 86 x 86 mm Min. Wall Box Depth: 25 mm Technical Insert Reference: R21 Product Code	2 gang 10AX 2 way Rocker Nominal Plate Size: 86 x 86 mm Min. Wall Box Depth: 25 mm Technical Insert Reference: R22 Product Code	3 gang 10AX 2 way Rocker Nominal Plate Size: 86 x 86 mm Min. Wall Box Depth: 25 mm Technical Insert Reference: R23 Product Code	4 gang 10AX 2 way Rocker Nominal Plate Size: 145 x 86 mm Min. Wall Box Depth: 25 mm Technical Insert Reference: R24 Product Code	6 gang 10AX 2 way Rocker Nominal Plate Size: 145 x 86 mm Min. Wall Box Depth: 25 mm Technical Insert Reference: R26 Product Code
Bright Chrome 	Bright Chrome Bright Chrome	White Black	77C R21 BC-W 77C R21 BC-B	77C R22 BC-W 77C R22 BC-B	77C R23 BC-W 77C R23 BC-B	77C R24 BC-W 77C R24 BC-B	77C R26 BC-W 77C R26 BC-B
Polished Brass 	Polished Brass Polished Brass	White Black	71C R21 PB-W 71C R21 PB-B	71C R22 PB-W 71C R22 PB-B	71C R23 PB-W 71C R23 PB-B	71C R24 PB-W 71C R24 PB-B	71C R26 PB-W 71C R26 PB-B
Satin Brass 	Satin Brass Satin Brass	White Black	72C R21 SB-W 72C R21 SB-B	72C R22 SB-W 72C R22 SB-B	72C R23 SB-W 72C R23 SB-B	72C R24 SB-W 72C R24 SB-B	72C R26 SB-W 72C R26 SB-B
Antique Brass 	Antique Brass	Black	79C R21 AB-B	79C R22 AB-B	79C R23 AB-B	79C R24 AB-B	79C R26 AB-B
Satin Stainless Effect 	Satin Stainless Satin Stainless	White Black	74C R21 SS-W 74C R21 SS-B	74C R22 SS-W 74C R22 SS-B	74C R23 SS-W 74C R23 SS-B	74C R24 SS-W 74C R24 SS-B	74C R26 SS-W 74C R26 SS-B
Black Nickel 	Black Nickel	Black	78C R21 BK-B	78C R22 BK-B	78C R23 BK-B	78C R24 BK-B	78C R26 BK-B

Hartland CFX R21 is a UK Registered Design Certificate No. 302446
Hartland CFX SS2 is a UK Registered Design Certificate No. 302445

Hartland CFX R21 is a Chinese Registered Design Certificate No. 605758
Hartland CFX SS2 is a Chinese Registered Design Certificate No. 659289