



BD264

### RCCB Add-on Blocks for MCB Devices

These products provide earth fault protection when associated with the 10kA (types NBN, NCN, NDN) range of MCBs.

They are designed to be fitted to the right hand side of 2 and 4 pole MCBs and the completed unit provides protection against:

- Overload
- Short circuit
- Earth faults

#### Technical Data

3 Non-Adjustable sensitivities  
30, 100 & 300mA  
nominal voltage 230 - 400V  
protection against nuisance tripping.  
2 pole = 2 Modules  
4 pole = 3 Modules

BS EN 61009 Appendix G

Selective (time delay) versions are available in 100mA & 300mA.

#### Connection Capacity

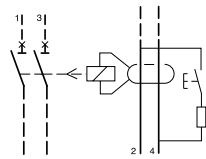
- 16mm<sup>2</sup> Flexible
- 25mm<sup>2</sup> Rigid

All devices have a test facility.



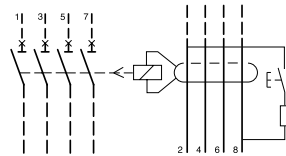
BD464

### Double Pole RCCB Add-On Blocks



Sensitivity $I_{\Delta n}$	$I_n/A$	Width (35mm)	Cat ref.	
30mA	63A	2 Mod	<b>BD264</b>	
100mA	63A	2 Mod	<b>BE264</b>	
300mA	63A	2 Mod	<b>BF264</b>	
Time Delayed	100mA	63A	2 Mod	<b>BN264</b>
Time Delayed	300mA	63A	2 Mod	<b>BP264</b>

### Four Pole RCCB Add-On Blocks



Sensitivity $I_{\Delta n}$	$I_n/A$	Width (52.5mm)	Cat ref.	
30mA	63A	3 Mod	<b>BD464</b>	
100mA	63A	3 Mod	<b>BE464</b>	
300mA	63A	3 Mod	<b>BF464</b>	
Time Delayed	100mA	63A	3 Mod	<b>BN464</b>
Time Delayed	300mA	63A	3 Mod	<b>BP464</b>