

Description

To provide all types of automatic control i.e. lighting, ventilation, watering, machine pre-heating, automatic door and visual audible indication, cycle control etc. with automatic switch off after preset time.

Applications

For timing and automation in domestic and commercial premises. The input signal can be via various switching devices (pushbutton, latching switch, timeclock etc.) and the timed output used to control the application.

Technical Data

Voltage range:
12 to 48V DC
12 to 230V AC
Adjustable: Time delay from 0.1s to 10hrs.
Complies with BS EN 60669-2-1

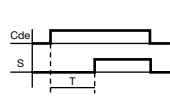
Terminal Capacity

6mm² max flexible
1.5 - 10mm² rigid
1 Mod = 17.5mm



EZN001

Delay On



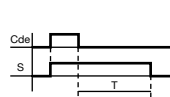
Characteristics
1 changeover contact
10A / 230V~ AC1
Time delay T:0.1s to 10hr

Width
1 Mod
Cat ref.
EZN001



EZN002

Delay Off



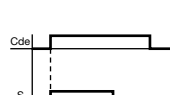
Characteristics
1 changeover contact
10A / 230V~ AC1
Time delay T:0.1s to 10hr

Width
1 Mod
Cat ref.
EZN002



EZN004

Adjustable Time On



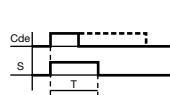
Characteristics
1 changeover contact
10A / 230V~ AC1
Time delay T:0.1s to 10hr

Width
1 Mod
Cat ref.
EZN003



EZN005

Timer



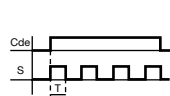
Characteristics
1 changeover contact
10A / 230V~ AC1
Time delay T:0.1s to 10hr

Width
1 Mod
Cat ref.
EZN004



EZN006

Symmetrical Flasher



Characteristics
1 changeover contact
10A / 230V~ AC1
Time delay T:0.1s to 10hr

Width
1 Mod
Cat ref.
EZN005

Multifunction

Characteristics
1 changeover contact
10A / 230V~ AC1
Time delay T:0.1s to 10hr

Functions
Delay On, Delay Off, Adjustable Time On, Adjustable Time Off, Timer, Symmetrical Flasher (On, Off)

Width
1 Mod
Cat ref.
EZN006

Modular Devices