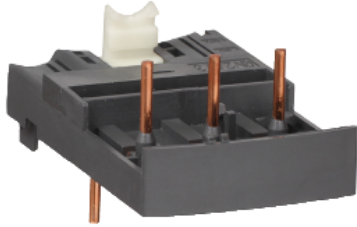


Product datasheet

Specifications



TeSys GV2 - Combination blocks - with contactor LC1D09...D38

Local distributor code: 389530068 GV2AF3

EAN Code : 3389110569063

Main

Range	Linergy
Product name	FT
Device short name	GV2AF
Product or component type	Combination block
Accessory / separate part category	Connection accessory
Range compatibility	TeSys GV2 TeSys Deca

Complementary

Product compatibility	LC1D09...D38
Poles description	3P
[Ie] rated operational current	32 A
Quantity per set	Set of 10
Net weight	0.016 kg

Packing Units

Unit Type of Package 1	PCE
Number of Units in Package 1	1
Package 1 Height	9.500 cm
Package 1 Width	10.000 cm
Package 1 Length	15.000 cm
Package 1 Weight	22.000 g
Unit Type of Package 2	BB1
Number of Units in Package 2	10
Package 2 Height	9.500 cm
Package 2 Width	10.000 cm
Package 2 Length	15.000 cm
Package 2 Weight	268.000 g
Unit Type of Package 3	S03

Number of Units in Package 3	140
Package 3 Height	30.000 cm
Package 3 Width	30.000 cm
Package 3 Length	40.000 cm
Package 3 Weight	4.196 kg

Offer Sustainability

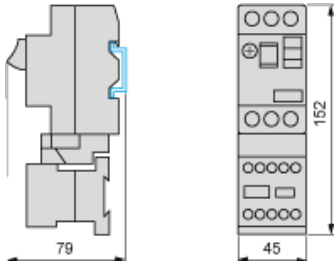
Sustainable offer status	Green Premium product
REACH Regulation	REACH Declaration
REACH free of SVHC	Yes
EU RoHS Directive	Compliant EU RoHS Declaration
Toxic heavy metal free	Yes
Mercury free	Yes
China RoHS Regulation	China RoHS declaration
RoHS exemption information	Yes
Environmental Disclosure	Product Environmental Profile
Circularity Profile	End of Life Information
WEEE	The product must be disposed on European Union markets following specific waste collection and never end up in rubbish bins

Contractual warranty

Warranty	18 months
-----------------	-----------

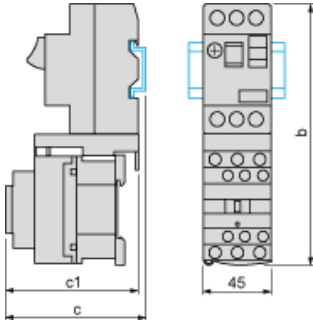
GV2AF01

Combination GV2ME + TeSys k contactor



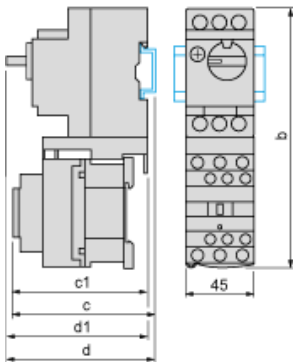
GV2AF3

Combination GV2ME + TeSys d contactor



GV2ME +	LC1D09...D18	LC1D25 and D32
b	176.4	186.8
c1	94.1	100.4
c	99.6	105.9

Combination GV2P + TeSys d contactor



GV2P +	LC1D09...D18	LC1D25 and D32
b	176.4	186.8
c1	100.1	106.4
c	105.6	111.9
d1	95	95
d	100.5	100.5

Recommended replacement(s)