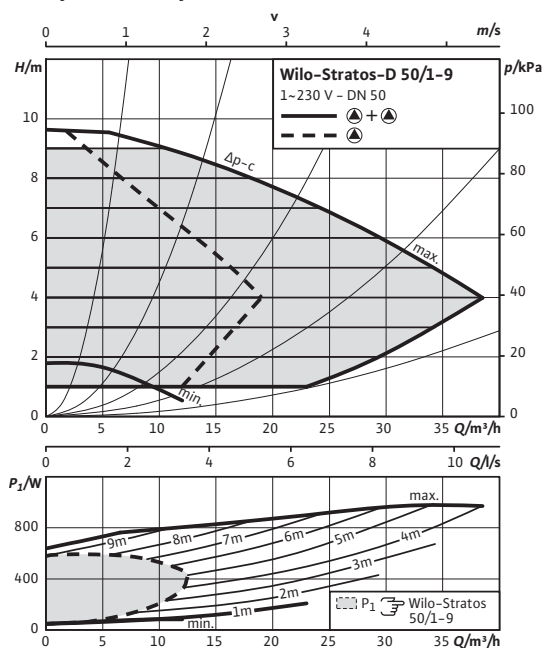
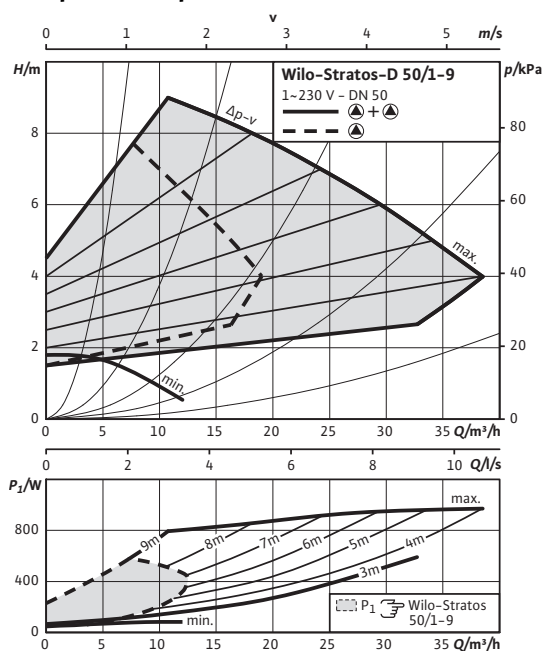


Data sheet: Wilo-Stratos-D 50/1-9

Pump curves $\Delta p-c$ (constant)



Pump curves $\Delta p-v$ (variable)



Approved fluids (other fluids on request)

Heating water (in accordance with VDI 2035)	•
Water-glycol mixtures (max. 1:1; above 20% admixture, the pumping data must be checked)	•

Permitted field of application

Temperature range at max. ambient temperature +40 °C	-10...+110 °C
Maximum permissible operating pressure	P _{max} 6/10 bar

Pipe connections

Flange	Combination flange PN6/10 (PN 16 flange according to EN 1092-2)
Nominal flange diameter	DN 50
Overall length	l _o 280 mm

Motor/electronics

Energy efficiency index (EEI)	≤ 0.27
Electromagnetic compatibility	EN 61800-3
Emitted interference	EN 61000-6-3
Interference resistance	EN 61000-6-2
Speed control	Frequency converter
Protection class	IP X4D
Insulation class	F
Mains connection	1~230 V, 50/60 Hz
Nominal motor power	P ₂ 400.00 W
Speed	n 1400 - 4100 rpm
Power consumption	P ₁ 25 - 490 W
Current consumption	I 0.20 - 2.15 A
Motor protection	integrated
Threaded cable connection	PG 1x7/1x9/1x13.5

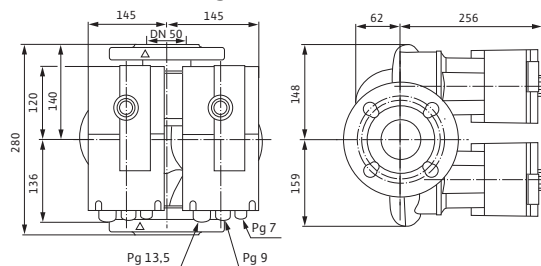
Materials

Pump housing	Grey cast iron (EN-GJL-250)
Impeller	Plastic (PPS - 40% GF)
Pump shaft	Stainless steel (X30Cr13/X46Cr13)
Bearing	Carbon, metal impregnated

Minimum suction head at suction port for avoiding cavitation at water pumping temperature

Data sheet: Wilo-Stratos-D 50/1-9

Dimension drawing

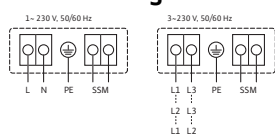


Minimum suction head at 50 / 95 / 110 °C 5 / 12 / 18 m

Information for order placements

Make	Wilo
Type	Stratos-D 50/1-9
Art no.	2090466
Weight approx.	<i>m</i> 27 kg

Terminal diagram



Collective fault signal

(NC contact according to VDI 3814, load capacity 1 A,

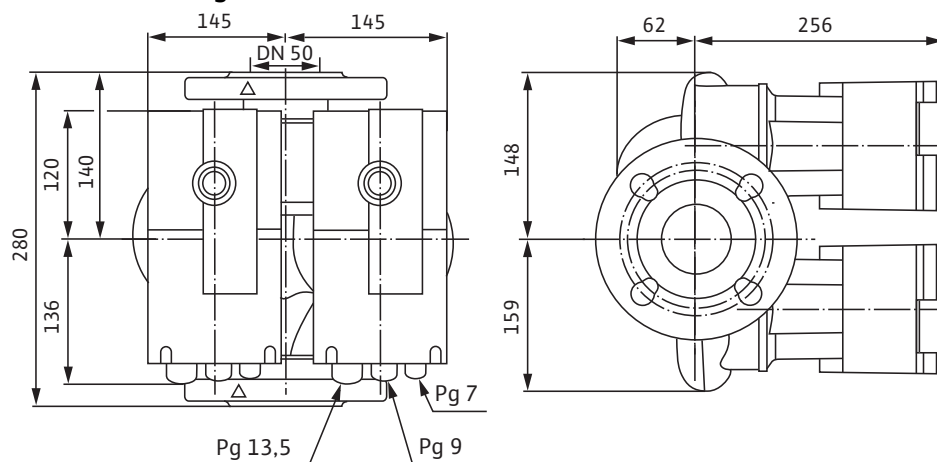
SSM: 250 V ~)

For function, see Wilo catalogue, chapter "Pump management Wilo-Control, consulting guide"



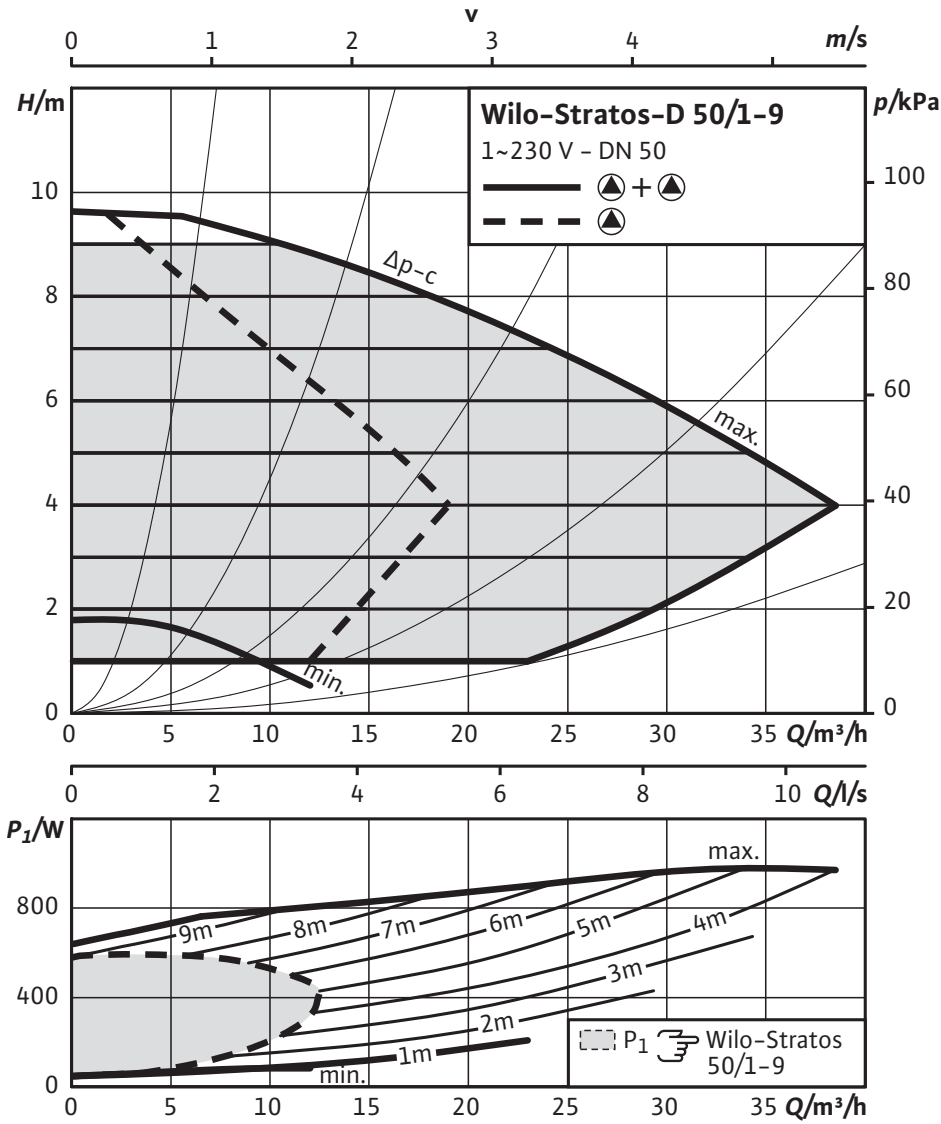
Dimensions and dimension drawings: Wilo-Stratos-D 50/1-9

Dimension drawing



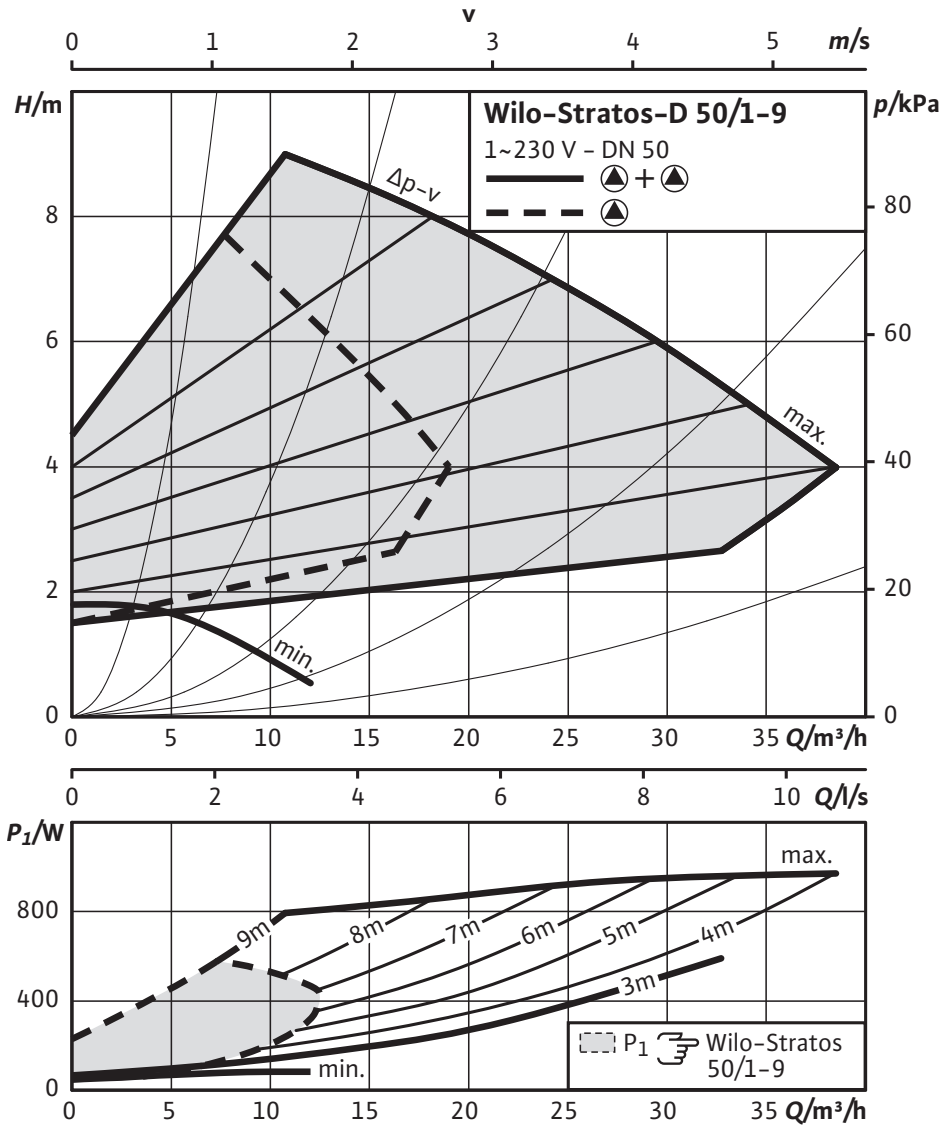
Pump curves: Wilo-Stratos-D 50/1-9

Pump curves Δp -c (constant)



Pump curves: Wilo-Stratos-D 50/1-9

Pump curves $\Delta p-v$ (variable)



Ordering information: Wilo-Stratos-D 50/1-9

Information for order placements		
Make	Wilo	
Type	Stratos-D 50/1-9	
Art no.	2090466	
EAN number	4016322994251	
Colour	green/black	
Minimum order quantity	1	
Minimum order quantity unit	PCE	
Weight (net)	<i>kg</i>	27
Length (net)	<i>mm</i>	280
Width (net)	<i>mm</i>	307
Height (net)	<i>mm</i>	339
Weight (gross)	<i>kg</i>	29.3
Length (gross)	<i>mm</i>	525
Width (gross)	<i>mm</i>	385
Height (gross)	<i>mm</i>	375
Packaging type	Cardboard box	
Packaging property	Transport packaging	
Pieces per pallet	12	
Number per layer	4	

Specification texts: Wilo-Stratos-D 50/1-9

Wilo-Stratos D high-efficiency pump
electronically controlled,

Glandless double pump with minimum operating costs, for pipe installation. Can be used for all HVAC applications (-10 °C to +110 °C). With built-in electronic power control for constant/variable differential pressure. One-button manual operation level for each pump as standard, for:

- Pump on/off
- Selecting the operating mode: Main/standby operation, parallel operation (efficiency-optimised peak load cut-in / deactivation)(accessories: 2 pcs. Stratos IF-modules necessary)
- Selecting the control mode:
- Automatic setback operation (self-learning)
- Setpoint and speed adjustment

Graphical pump display for each pump, with rotatable display horizontal and vertical module mounting, for display of:

- Operating state
- Control mode
- Differential pressure or rotation speed setpoint
- Fault and warning signals
- Double-pump operating mode

Synchronous motor using ECM technology with very high efficiency and high starting torque, automatic deblocking function and built-in full motor protection.

Fault signal light, potential-free collective fault signal, infrared interface for wireless communication with Wilo IR-Monitor/IR-Stick operating and service device.

Plug-in slot for Wilo Stratos IF-modules with interfaces for building automation (BA) or dual pump management (accessories: 2 pcs IF-modules Stratos Modbus, BACnet, LON, CAN, PLR, Ext.Aus, Ext.Min, SBM, Ext.Aus/SBM or DP).

Pump housing made of cast iron with cathaphoretic coating, impeller made of glass-fibre reinforced plastic, stainless steel shaft with metal impregnated carbon plain bearings.

Flange versions:

- Standard version for pumps DN 32 to DN 65: Combination flange PN 6/10 (flange PN 16 acc. to EN 1092-2) for counter flanges PN 6 and PN 16
- Standard version for pumps DN 80: Flange PN 6 (configured for PN 16 acc. to EN 1092-2) for counter flange PN 6
- Special version for pumps DN 32 to DN 80: Flange PN 16 (acc. to EN 1092-2) for counter flange PN 16

Materials

Pump housing: Grey cast iron (EN-GJL-250)

Impeller: Plastic (PPS - 40% GF)

Pump shaft: Stainless steel (X30Cr13/X46Cr13)

Bearing: Carbon, metal impregnated

Approved fluids (other fluids on request)

Max. volume flow: 38 m³/h

Max. delivery head: 9 m

Pipe connections

Nominal flange diameter: DN 50

Flange: Combination flange PN6/10 (PN 16 flange according to EN 1092-2)

Overall length: 280 mm

Motor/electronics

Specification texts: Wilo-Stratos-D 50/1-9

Energy efficiency index (EEI): ≤ 0.27

Electromagnetic compatibility: EN 61800-3

Emitted interference: EN 61000-6-3

Interference resistance: EN 61000-6-2

Speed control: Frequency converter

Protection class: IP X4D

Insulation class: F

Mains connection: 1~230 V, 50/60 Hz

Mains frequency: 50/60 Hz

Nominal motor power: 400 W

Speed: 1400 - 4100 rpm

Power consumption 1~230 V: 25 - 490 W

Current at 1~230V: 0.20 - 2.15 A

Motor protection: integrated

Threaded cable connection: 1x7/1x9/1x13.5

Information for order placements

Art no.: 2090466

EAN number: 4016322994251

Weight approx.: 27 kg

Make: Wilo

Type: Stratos-D 50/1-9

Installation positions: Wilo-Stratos-D 50/1-9

asim:tr(use.title1)}

asim:tr(use.title2)}

