

Important Information

We recommend that luminaires are installed by a qualified electrician ensuring the installation complies with current IEE wiring regulations BS7671:2008 & local building control.

- All tests should be carried out in accordance to EN 50172:2004.
- BELL will not accept responsibility for any claims arising from a poor installation.

Important User Advice

- The ambient room temperature should not exceed 25°C.
- Ensure that there is adequate free air ventilation around the fitting.
- Always switch off mains supply before installing.

This product may contain substances that can be hazardous to the environment if not disposed of properly. Electrical and electronic equipment should never be disposed of with general household waste but must be separated for its correct treatment and recovery.

Where possible recycle your packaging.



Read these instructions before installation and retain for future reference

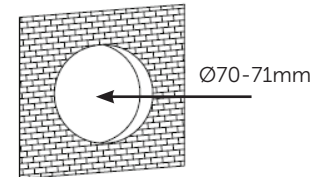
This equipment should be installed by a competent electrician



Installation

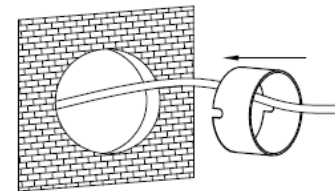
1: Plastic sleeve

- Cut a hole in the wall using the plastic sleeve as a template



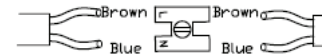
2: Plastic sleeve

- Ensuring the 2 flat sides are aligned to the correct final position of the luminaire.
- Cement the sleeve into the wall



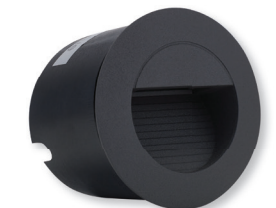
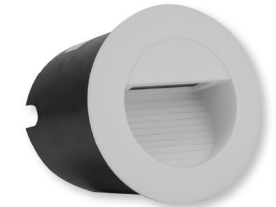
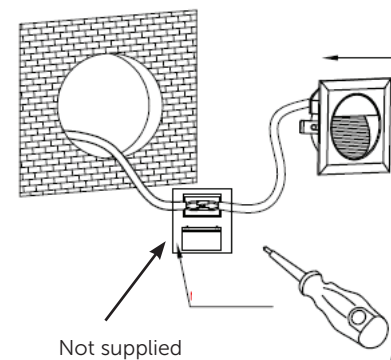
3: Connecting the cable

- 300mm of cable is prewired and installed into the luminaire, this cable may be cut to length if required
- Connect the preinstalled cable to suitable mains 230V cable/supply ensuring correct polarity is observed BROWN-LIVE. BLUE-NEUTRAL using a suitable connector block (not supplied)



4: Final installation

- Align the clips on either side of the luminaire with the flats on the plastic sleeve, squeeze the clips together and insert into the plastic sleeve
- Push the 2 mounting clips together at the sides of the fitting, align with the flat sides of the plastic sleeve and insert the luminaire into the plastic sleeve ensuring not to trap the mains cable
- If the product is being used externally silicone sealant (not supplied) may be used to ensure the IP rating of the product is maintained
- Test for correct operation



230V

IP 54

