

Read these instructions before installation and retain for future reference  
 This equipment should be installed by a competent electrician



### Important Information

We recommend that luminaires are installed by a qualified electrician ensuring the installation complies with current IEE wiring regulations BS7671:2018 & local building control.

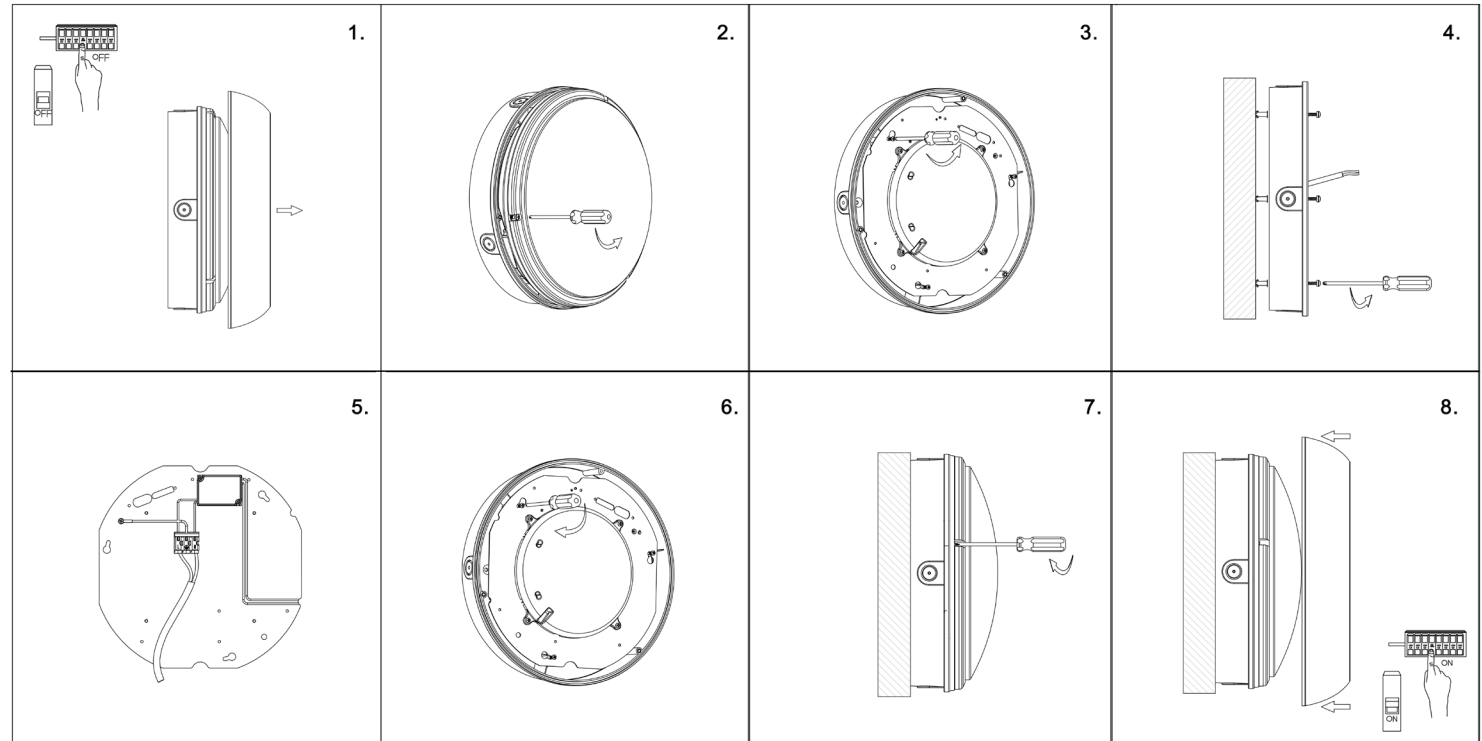
- All tests should be carried out in accordance to EN 50172:2004.
- BELL will not accept responsibility for any claims arising from a poor installation.

### Important User Advice

- Always switch off mains supply before installing.
- Operating Temperature 0°C to +35°C
- You are advised to test 5 samples before mass application of sensor in a new lighting project. The distance between any inductive sensors should be greater than 3m.
- Microwave maximum operating height 3.2m.

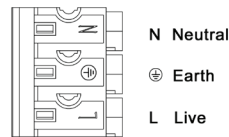
This product may contain substances that can be hazardous to the environment if not disposed of properly. Electrical and electronic equipment should never be disposed of with general household waste but must be separated for its correct treatment and recovery.

Where possible recycle your packaging.

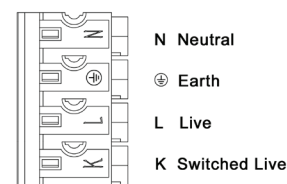


### Wiring Diagrams

Standard / with Dimming Sensor:



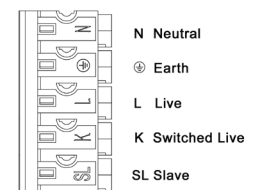
Emergency / Emergency c/w Dimming Sensor:



Microwave Sensor:



Emergency c/w Microwave Sensor:

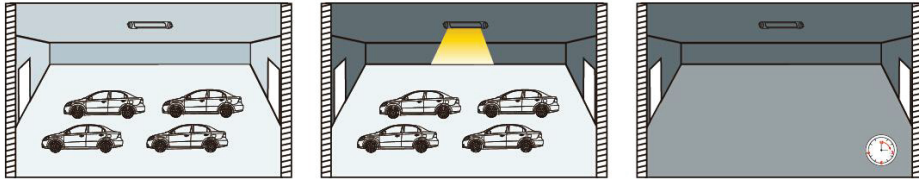


Slave function is only available in the on/off sensor versions up to a maximum of 10 additional AQUA1 fittings

Read these instructions before installation and retain for future reference  
 This equipment should be installed by a competent electrician



## On/Off Function



- 1 With sufficient ambient light, the light will not be switched on even if with motion signal.
- 2 With insufficient ambient light, the sensor switches on the light when motion is detected.
- 3 After elapse of hold time, the sensor switches off the light when no motion is detected.

## DIP Switch Setting

Detection Area (Sensitivity)

	1	2
100%	ON	ON
75%	-	ON
50%	ON	-
25%	-	-

Hold Time

	3	4	5	
I	ON	ON	ON	5S
II	-	ON	ON	30S
III	ON	-	ON	90S
IV	-	-	ON	5min
V	ON	ON	-	20min
VI	-	-	-	30min

Daylight Threshold

	6	7	8	
I	ON	ON	ON	2Lux
II	ON	ON	-	10Lux
III	-	ON	-	30Lux
IV	ON	-	-	50Lux
V	-	-	-	Disable*

\*Disable" means the daylight sensor not work. it will turn on light once motion is detected regardless of ambient light .

### Override Function

Quick switch ON/OFF 3 times within 2sec to override sensor function. Lights will switch on all the time. Power off and on again to recover sensor function.

### Initialization

After power on, the sensor automatically turns on light at 100% brightness. After 10sec, it turns off the light. During the initialization, the sensor is not able to detect movement.

### Factory Setting

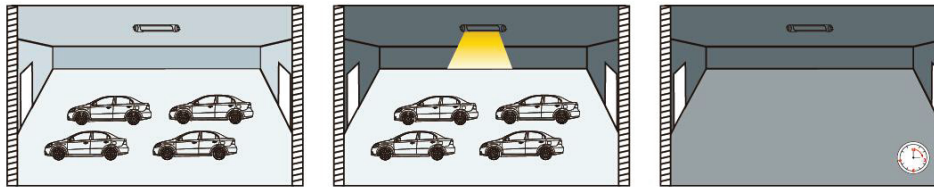
Detection area: 100%, Hold Time: 5S, Daylight Sensor: Disable

Read these instructions before installation and retain for future reference  
 This equipment should be installed by a competent electrician



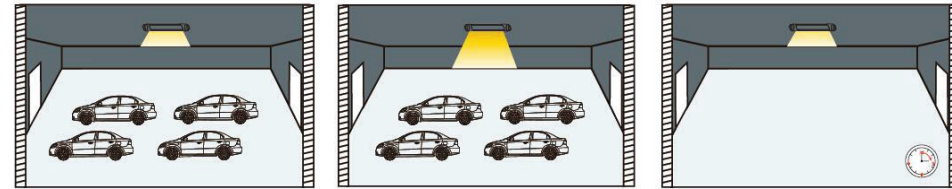
## Microwave Function

1) On/OFF Function (stand-by period be set to "0"s)



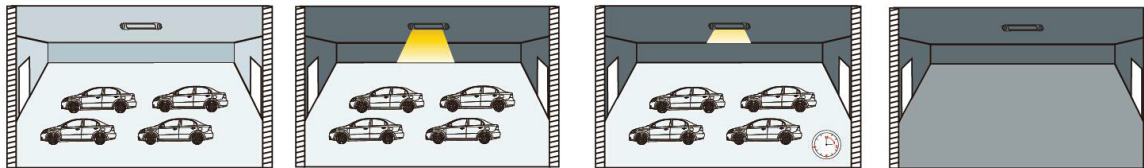
- 1 With sufficient ambient light, the light will not be switched on even if with motion signal.
- 2 With insufficient ambient light, the sensor switches on the light when motion is detected.
- 3 After elapse of hold time, the sensor switches off the light when no motion is detected

2) 2-step dimming function (stand-by period be set to "+∞")



- 1 If there is no motion detected, the light will be remained at a low light level all the time.
- 2 When motion is detected, the sensor will switch on the light to 100% brightness
- 3 After elapse of hold time, the sensor dims the light at the present low light level if no motion is detected.

3) 3-step dimming function (stand-by period be set to "10S/1min/3min/5min/10min/30min")



- 1 With sufficient ambient light, the light will not be switched on even if with motion signal.
- 2 With insufficient ambient light, the sensor switches on the light when motion is detected.
- 3 After elapse of hold time, the sensor dims the light at a low light level if no new motion is detected.
- 4 After elapse of standby period, the sensor switches off the light if no motion is detected in the detection zone.

Read these instructions before installation and retain for future reference  
 This equipment should be installed by a competent electrician



## Microwave Function DIP Switch Setting

Detection Area

	1	2	
I	ON	ON	100%
II	-	ON	75%
III	ON	-	50%
IV	-	-	25%

Hold Time

	3	4	
I	ON	ON	5S
II	-	ON	90S
III	ON	-	3min
IV	-	-	10min

Daylight Sensor

	5	6	
I	ON	ON	+∞
II	-	ON	50Lux
III	ON	-	15Lux
IV	-	-	5Lux

Standby Period

	7	8	
I	ON	ON	0s
II	-	ON	30s
III	ON	-	10min
IV	-	-	+∞

### Factory Settings

Detection Area: 100%, Hold Time:5S ,Stand-by period:0S , Stand-by dim level:25%, Daylight sensor: Disable.

### Application Notice

The sensor should be installed by a professional electrician. Please turn off the power before installing, wiring changing the setting of the DIP switch.

Read these instructions before installation and retain for future reference  
 This equipment should be installed by a competent electrician



## Testing & Commissioning for Emergency Luminaire

- Ensure the Load is connected.
- Connect the battery.
- Switch on the Unswitched Supply  
- Check the Charge LED illuminates.
- Switch on the Maintained Supply  
- Check the LED illuminates as normal.
- Switch off the Maintained Supply.
- Switch off the Unswitched Supply  
- Check the Charge LED extinguishes and the load LED illuminates at a reduced output.
- Enter the commissioning date on the Battery Pack.  
Switch on the Unswitched Supply

Luminaire Ref/Location	In Case of difficulty, contact the Installation Engineers:- Tel: _____									
Full Recharge Time 24 Hours	Duration 3 Hours					Lamp Type - LED				
ROUTINE TEST RECORD										
Monthly Test	Year 1		Year 2		Year 3		Year 4		Year 5	
	Signed	Date	Signed	Date	Signed	Date	Signed	Date	Signed	Date
Functional										
Functional										
Functional										
Functional										
Functional										
Functional										
Functional										
Functional										
Functional										
Functional										
Functional										
Functional										
Three Hour										