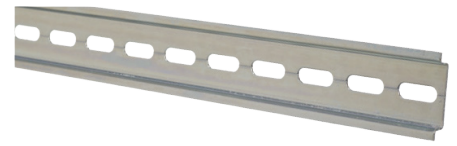


STBDR2M

Specifications and dimensions



- TS35 Top Hat Din Rail
- Slotted

Features	
Length	2m
Width	35mm
Height	7.5mm
Weight	0.625Kg
Standard	DIN 46277
Construction	Cold rolled steel
Coating	Galvanised Zinc
Coating thickness	> 8 microns
Slot dimension	15mm x 6.3mm
Related products	
Steel end clamp	CA302
Mounting bracket	CA603

ⓘ ALL PRODUCTS, PRODUCT SPECIFICATIONS AND DATA ARE SUBJECT TO CHANGE WITHOUT NOTICE.

Information provided in data sheets and/or specifications may vary from actual results in different applications and performance may vary over time. **All products must be installed according to manufacturers instructions.**

Europa House, Airport Way, Luton, Beds, LU2 9NH Tel: 01582 692 440 / Fax: 01582 692 450 e-mail: sales@europacomponents.com
website: <http://www.europacomponents.com>