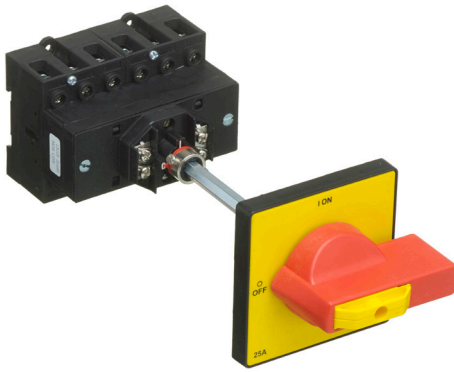


## 6 Pole Door Interlock with Metal Shaft



Shaft can be cut down to suit application

### IEC & EN 60947-3

Padlockable in the OFF position for added security (For up to 3 padlocks)  
Rear mount or snap on din rail mount (35mm)  
Shaft Length: 94mm / Shaft 8mm across flats (Hexagonal)  
Use rubber gasket (**LBGASKET**) for IP65 rating - Sold separately  
**All switch ratings at AC-22** - See page 141 for technical data

Part Number	Description	Price	Per
LBDI256P	25A 6 Pole Door Interlocked	£48.67	1
LBDI326P	32A 6 Pole Door Interlocked	£53.97	1
LBDI636P	63A 6 Pole Door Interlocked	£60.21	1
LBDI806P	80A 6 Pole Door Interlocked	£87.77	1
LBDI1256P	125A 6 Pole Door Interlocked	£111.77	1

## Door Interlock Changeover Switches

### Door Interlock Changeover



Shaft can be cut down to suit application

### IEC & EN 60947-3

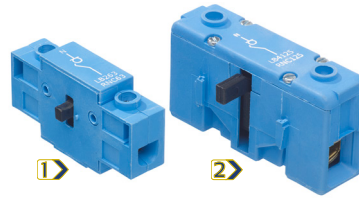
Fitted with 2 early make/late break neutral contacts  
Rear mount or snap on din rail mount (35mm)  
Door interlock (Door opens in OFF position only)  
Padlockable in the OFF position for added security (For up to 3 padlocks)  
**All switch ratings at AC-22** - See page 141 for technical data  
Break before make 3 position switch - centre OFF

Part Number	Description	Price	Per
LBCDI634P	63A 4 Pole	£70.06	1
LBCDI804P	80A 4 Pole	£116.03	1
LBCDI1254P	125A 4 Pole	£140.04	1

**NB:** Complete with busbars. Metal shaft length 98mm - shaft 8mm across flats (Hexagonal). A 282mm long shaft is available on request

## Accessories for Enclosed & Door Interlocked Switch-Disconnectors

### Neutral Pole (Early Make Late Break)

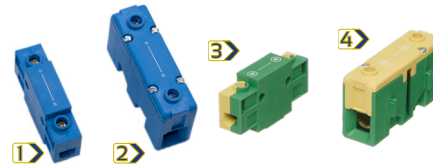


### IEC & EN 60947-3

Neutral pole / Fully rated  
Rear mount for door interlock and enclosed switch-disconnectors  
Colour coded in blue for easy identification  
All switch ratings at AC-22

Part Number	Description	Price	Per
1) LB263AUXEM	25A-63A Neutral Pole	£4.61	1
2) LB2125AUXEM	80-125A Neutral Pole	£11.06	1

### Neutral & Earth Links (Rear Mounting)



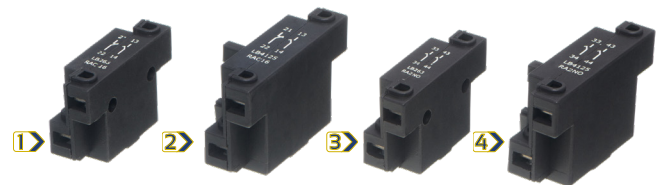
**Range Extended**

### IEC & EN 60947-3

Neutral link / Fully rated  
Rear mount for door Interlock and enclosed switch-disconnectors.  
All switch ratings at AC-22

Part Number	Description	Price	Per
1) LB263AUXL	20-63A Neutral Link	£3.44	1
2) LB2125AUXL	80-125A Neutral Link	£8.77	1
3) LB263EL	20-63A Earth Link	£3.44	1
4) LB2125EL	80-125A Earth Link	£8.77	1

### Volt Free Contact



### IEC & EN60947-3

Rear mount for door interlocked & enclosed switch-disconnectors  
Volt free contacts rated at AC-15 6A 230V / 4A 415V  
Maximum terminal capacity 1.5mm<sup>2</sup>

Part Number	Description	Price	Per
1) LBAC16RM	20-63A Aux Switch 1N/C & 1N/O R/M	£7.20	1
2) LBAC125RM	80A-125A Aux switch 1N/C & 1N/O R/M	£7.92	1
3) LBAC16RM2NO	20-63A Aux Switch 2N/O R/M	£7.20	1
4) LBAC125RM2NO	80-125A Aux Switch 2N/O R/M	£7.92	1