

**DESIGNED  
TO PERFORM**  
BUILDING REGULATIONS  
APPROVED DOCUMENT F: APRIL 2006

**AIRFLOW**

**iCON**

*The new face of ventilation*



reddot design award

*Always Innovating*  
ESTABLISHED 1955

**AIRFLOW™**   
SPECIALISTS IN AIR MOVEMENT TECHNOLOGY

# AIRFLOW iCON™



## *Its looks aren't everything*

You've never seen a fan like it. Or installed one like it either. Because it's better looking, quieter and easier to install than many other fans.

Its slim profile and iris shutter make it as stylish as a downlighter. The unique shutter design makes switching on and off almost silent, and helps reduce external noise ingress.

### **So versatile**

Elegant design goes eye to eye with the quality and attention to detail demanded by modern day homebuilders. Thoughtfully conceived iCON presents the specifier and installer with a new dimension in simplicity of selection and installed performance.

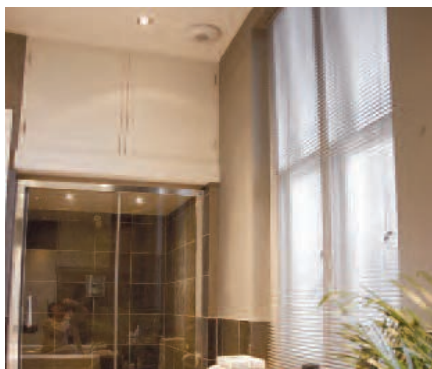
Matching the required control functions (pull cord, timer, humidity, PIR, two speed) to the installation, simply means plugging in an interchangeable module into any iCON fan. It's a win win situation for the stockist too who optimises his shelf space and for the contractor who avoids carrying a van load of fans.

### **Designed to Perform**

The new Building Regulations, Approved Document F, April 2006\*, details performance based alternatives to deliver effective ventilation.

iCON fans comply with the air flow requirements for intermittent extraction rates and continuous ventilation for toilets, bathrooms, utility rooms and kitchens.

iCON 15 is designed to meet the specific advice in the Good Practice Guide to the installation of fans for dwellings in appendix E for ducted axial fan bathroom installations when used with our specified flexible ducting and exterior grille. iCON 30 meets the specific Good Practice Guide for ducted centrifugal fan bathroom installations when used with our specified flexible ducting and exterior grille.



#### **Toilets and bathrooms**

With efficient extraction in a range of capacities, iCON fans are ideally suited to toilets, en suites and bathrooms.



#### **Kitchens and utility rooms**

iCON's design fits unobtrusively into any style of kitchen and its high efficiency is perfect for utility rooms.



#### **Safety and Economy**

Low energy, low watt iCON fans (12V DC) provide long life with considerable savings, combined with SELV (safety extra low voltage) protection in wet zones.

# AIRFLOW iCON™



- Quiet, stylish, slim and unobtrusive in walls or ceilings
- Unique iris shutter, prevents back draughts, operates silently and helps reduce noise ingress
- Range comprises 21 l/sec, 32 l/sec and 72 l/sec fans
- Interchangeable control modules match fan to installation requirements
- Meets Building Regulations, Approved Document F, April 2006, for extract fans
- TÜV approved
- Continuous ventilation fans, adjustable 8 l/sec and 13 l/sec extraction.
- 12V DC low energy, low watt, long life/SELV versions
- Splashproof, tiling friendly, wipe clean cover
- Comprehensive range of accessories
- Three year 'no quibble' guarantee

# AIRFLOW iCON™



CEILING INSTALLATION



RECESSED INSTALLATION



SURFACE MOUNTED

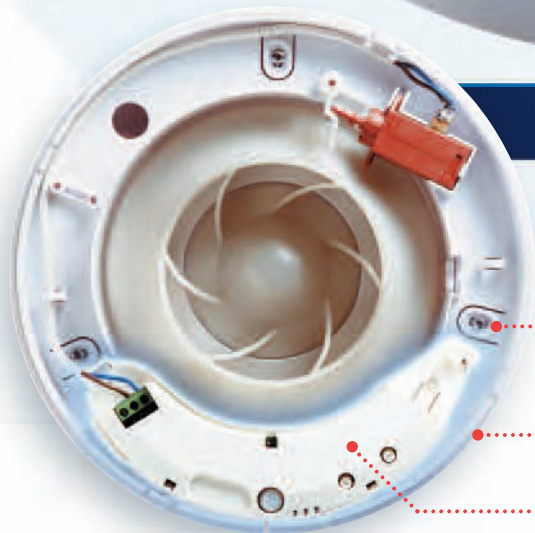


**Modular versatility and simplicity**

**Select the fan –**

**iCON 15, iCON 30, iCON 60,**

**add the module,  
any module fits  
any fan.**



• Cantilever lugs to facilitate uneven surfaces

• Simple twist on/off cover mechanism

• 'Snap-in' interchangeable module, quick to fit and wire



## Range

The choice of three aesthetically designed fans in the iCON range means you can fit the perfect size to perform effectively for the size of room and the application. The low profile iCON 15 axial fan is sleek and slim. The iCON 30 and iCON 60 mixed centrifugal/axial flow fan technology makes them not only highly compact and efficient but also extremely quiet in operation and suitable for use with longer runs of ducting.

## AIRFLOW iCON™ 15

**iCON 15 is ideal for toilets, en-suites, shower rooms and bathrooms. Recessed into the wall or ceiling, it is stylish and unobtrusive, even in the smallest space.**

**Ductable over short runs.**

Fan Size	Power	Voltage	Air flow
197x40mm	14.5W	230V	21 l/sec (76m³/hr)

## AIRFLOW iCON™ 30

**iCON 30 is quiet, powerful and designed for recessed or surface mounting in walls or ceilings in larger toilets, bathrooms and utility rooms.**

**Ductable over longer runs.**

Fan Size	Power	Voltage	Air flow
225x43mm	30W	230V	32 l/sec (118m³/hr)

## AIRFLOW iCON™ 60

**iCON 60 is the largest fan in the range, suitable for recessed or surface mounting in walls or ceilings and is highly efficient in domestic kitchens and residents' lounges.**

Fan Size	Power	Voltage	Air flow
280x55mm	75W	230V	72 l/sec (260m³/hr)

## A Round Fan for a round Hole

iCON has been designed with simplicity in mind. A quick, core drilled hole enables immediate fixing of iCON 15. The twist on/off cover requires only a single side entry fixing screw. Cantilever fixing lugs enable recessed installation on uneven surfaces. iCON 30 and iCON 60 are also supplied with a narrow contour skirt for surface mounting if preferred. The 'snap-in' module is quick to fit and wire. Tiling is a breeze with the circular cover flange, reducing the need to 'make good' and one wipe and the cover is clean.

## 12V DC low energy fans – iCON 15S and iCON 30S

iCON 12volt *SELV* low watt fans with brushless DC motors offer significantly reduced energy consumption compared with standard AC motors. Fitted with ball bearing motors for extra long life, each one is supplied with a 230V AC transformer. Interchangeable fan control modules are available. Both fans are *SELV* (safety extra low voltage) compliant with IEE wiring regulations for wet zones in bathrooms.

## Continuous ventilation fans

iCON 15CV and iCON 30CV provide quiet, adjustable continuous background ventilation at a minimum high rate of 8 l/sec and 13 l/sec respectively with a choice of control options to boost performance to maximum air flow. Contact Airflow for details.

## Installation

iCON has been designed with simplicity in mind. A quick, core drilled hole enables immediate fixing of iCON. The twist on/off cover requires only a single side entry fixing screw. Cantilever fixing lugs enable recessed installation on uneven surfaces. iCON 30 and iCON 60 are also supplied with a narrow contour skirt for surface mounting if preferred. The 'snap-in' module is quick to fit and wire giving the installer a choice of controls on-site.



Drill hole in wall



Snap-in module



Wire to power supply



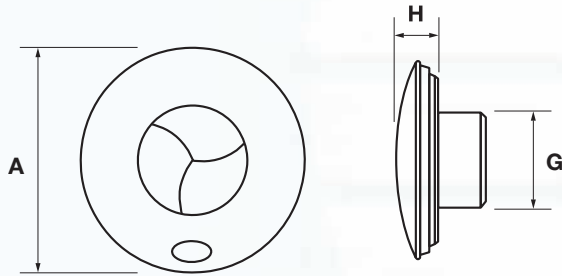
Fix front cover

MODULE	CONTROL	FUNCTION
	<b>Basic</b>	Fan operates by remote switch (optional). No module required
<b>PCM</b>	72573602 <b>Pull Cord</b>	Manual on/off control by pull cord switch
<b>TM</b>	72612601 <b>Timer</b>	Adjustable timer 1 to 45 minutes. Remote or light switch operation
<b>HTM</b>	72573902 <b>Humidity</b>	Adjustable humidity setting 40% to 90% RH, adjustable timer and pull cord boost
<b>PRTM</b>	72573903 <b>Infrared</b>	Passive infrared activation with adjustable timer overrun
<b>PRHTM</b>	72573901 <b>Infrared</b>	Passive infrared activation with adjustable humidity setting and adjustable timer overrun
<b>CV Fans</b>	<b>Two speed</b>	iCON 15CV, 8 l/sec, constant trickle with boost to 21 l/sec iCON 30CV, 13 l/sec constant trickle with boost to 32 l/sec Contact us for options available

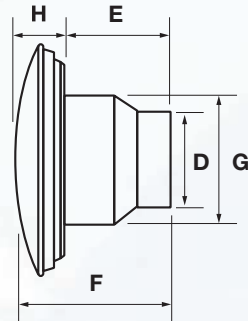
**DIMENSIONS (MM)**

Model	A	B	C	D	E	F	G	H
<b>iCON 15</b>	197	-	-	-	52	92	100	40
<b>iCON 30</b>	225	141.3	29.4	97.5	100.9	144.3	147.9	43
<b>iCON 60</b>	280	165.4	46.5	147.9	115	170.3	176.8	55

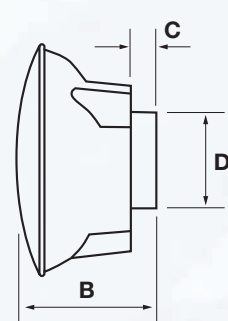
**Recessed mounted  
iCON 15**



**Recessed mounted  
iCON 30 & iCON 60**



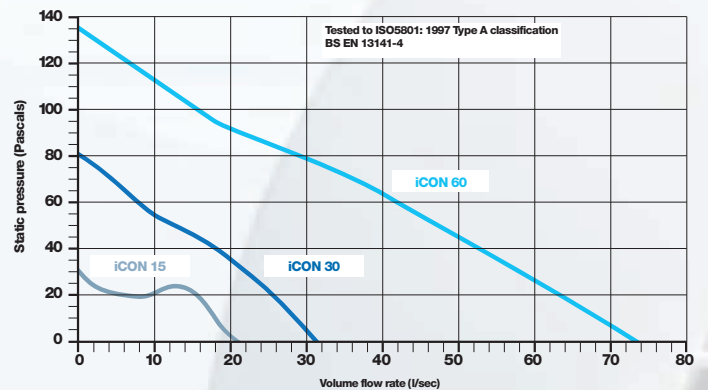
**Surface mounted  
iCON 30 & iCON 60**



**TECHNICAL SPECIFICATION**

MODEL Part No.	<b>iCON 15</b> 72591501	<b>iCON 30</b> 72591601	<b>iCON 60</b> 72591701
<b>Extract volume</b>	21 l/sec (76 M <sup>3</sup> /hr)	32 l/sec (118 M <sup>3</sup> /hr)	72 l/sec (260 M <sup>3</sup> /hr)
<b>Sound pressure dB(A)@ 3m</b>	35	34.5	44.5
<b>Impeller</b>	Axial	Centrifugal/axial	Centrifugal/axial
<b>Mounting (Wall/Ceiling)</b>	Recessed	Recessed and surface	Recessed and surface
<b>Weight (Kg)</b>	0.74	1.11	1.97
<b>Outlet (dia)</b>	100mm (4")	100mm (4")	150mm (6")
<b>Power (watts)</b>	14.5W	30W	75W
<b>Voltage</b>	230V/1PH/50Hz	230V/1PH/50Hz	230V/1PH/50Hz
<b>Max Amb Temp</b>	40°C	40°C	40°C
<b>Rating</b>	□, △, IPX4	□, △, IPX4	□, △, IPX4
<b>Ductable (max)<sup>†</sup></b>	up to 4m	up to 9m	up to 9m

**AIR PERFORMANCE**



<sup>†</sup>Maximum length using rigid pipe, one 90° bend and external grille. Use 204 x 60mm Airflex flat ducting for narrow joist installations. iCON meets installed Performance conditions in Approved Document F\* April 2006, Good Practice Guide Appendix E for installations when using manufacturers specified ducting and external grille.

© Crown copyright\* \* Visit [www.communities.gov.uk](http://www.communities.gov.uk) for information

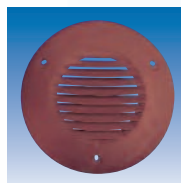
**ACCESSORIES**

iCON 15 and iCON 30 can be ducted through standard 100mm (4") rigid, flexible or flat ducting. iCON 60 can discharge through 150mm (6") ducting. Airflow supply a comprehensive range of ducting,

accessories and controllers and can advise on specification of compatible ducting and grilles to meet Good Practice Guidance\*.



'Easy fit' cavity wall kit



Circular grilles



Steel flat ducting



Airflex ducting



Door switch



Wall grilles



Wall grilles with spigots



Airflat ducting



iCON 60 Speed controller



Roof cowl



Cavity wall kit

# Low energy DC fans

Low Energy  
+ Long Life  
= SAVINGS



## iCON 15S and iCON 30S

*Energy saving and extra safe!*

iCON 12 volt SELV low watt fans with brushless DC motors offer significantly reduced energy consumption compared with standard AC motors. They are also better looking, quieter and easier to install than many other fans. Fitted with ball bearing motors for extra long life, each model is supplied with a 230v AC to 12VDC transformer.

### Range

Aesthetically designed and extremely efficient, the iCON range of low watt DC fans provides economy in use with a long working life and SELV protection. The iCON 15S axial fan is sleek and slim, while iCON 30S mixed centrifugal/axial flow technology makes it highly compact and also quiet in operation.

Interchangeable fan control modules are available and are conveniently sited in the fan, not the remote transformer. Both models are SELV (safety extra low voltage) compliant with IEE wiring regulations for wet zone 1 and higher in bathrooms. The unique iris shutter design makes switching on and off almost silent and helps reduce external noise ingress.

### Accessories

iCON 15S and iCON 30S can be ducted through standard 100mm (4") rigid, flexible or flat ducting. Airflow supplies a comprehensive range of ducting, accessories and controllers to complement an installation and can advise on specification of compatible ducting and grills to meet Good Practice Guidance.



## AIRFLOW iCON™ 15S

**iCON 15S is ideal in toilets and wet zones in en-suites, shower rooms and bathrooms. Recessed into the wall or ceiling, it is stylish and unobtrusive, even in the smallest space. Supplied with AC/DC transformer.**

Housing	Fan Size	Ductable	Air flow
IPX4	197 x 89mm	Up to 4m	70m <sup>3</sup> /hr

## AIRFLOW iCON™ 30S

**iCON 30S is quiet, powerful and designed for recessed or surface mounting in walls or ceilings in wet zones in larger toilets, bathrooms and utility rooms. Supplied with AC/DC transformer.**

Housing	Fan Size	Ductable	Air flow
IPX4	225x141mm	Up to 9m	111m <sup>3</sup> /hr

MODULE	CONTROL	FUNCTION
	<b>Basic</b>	Fan operates by remote switch (optional). No module required
<b>PCS</b>	<b>Pull Cord</b>	Manual on/off control by pull cord switch
<b>PCTS</b>	<b>Timer</b>	Pull cord on, Adjustable timer 1 to 45 minutes.
<b>HTS</b>	<b>Humidity</b>	Adjustable humidity setting 40% to 90% RH, adjustable timer and pull cord boost
<b>PRTS</b>	<b>Infrared</b>	Passive infrared activation with adjustable timer overrun
<b>PRHTS</b>	<b>Infrared</b>	Passive infrared activation with adjustable humidity setting and adjustable timer overrun
<b>CV Fans</b>	<b>Two Speed</b>	Continuous ventilation fans, iCON 15 CVS and iCON 30 CVS contact Airflow

Note: SELV fans only use SELV modules identified by green cartons

DIMENSIONS (MM)		
Transformer	Rating	Conformity
HxWxD 95 x 160 x 85	IPX55	BS3535

TECHNICAL SPECIFICATION		
Performance	iCON 15S	iCON 30S
Extract volume	19.5 l/sec (0.2 m <sup>3</sup> /hr)	31 l/sec (111 m <sup>3</sup> /hr)
Sound pressure dB(A)@ 3m	35	34.5
Impeller	Axial	Mixed centrifugal/axial
Mounting (Wall/Ceiling)	Recessed	Recessed and surface
Weight (Kg)	0.74	1.11
Ductable (max) <sup>†</sup>	Up to 4m	Up to 9m
Outlet (dia)	100mm (4")	100mm (4")
Power (watts)	11W	21.2W
Voltage	230V/1PH/50Hz	230V/1PH/50Hz
Max Amb Temp	40°C	40°C
IP Rating	□, △, IPX4	□, △, IPX4

<sup>†</sup> See note on previous page  
 Tested to : Air performance ISO 5801: 1997  
 Complies : Electrical appliance safety BS EN 60335-2-80  
 The recommended maximum cable length between the fan and transformer is 5m for 1.5mm<sup>2</sup> cables

# AIRFLOW ABSTRACT FANS



Anthracite



Sandstone



Silver

## Style supplied as standard.

iCON fans complement modern day living by harmonising with virtually any interior design. Neat, unobtrusive and stylish, they provide quiet and reliable ventilation while blending into the background.

Available from stock in Anthracite, Sandstone, Silver and Glacier White matt wipe-clean finish, they add colour and co-ordination to your toilet, bathroom and kitchen – and at surprisingly low cost.



**Chrome and Anthracite**  
*the perfect blend*

## Bespoke style – what colour is your iCON?

Appealingly personal, iCON fans can be supplied to your design requirements. From as little as 50 fans we can make your iCON design a reality.

Contact us for further details.

### Airflow Developments Limited

Lancaster Road, Cressex Business Park  
High Wycombe, Buckinghamshire  
HP12 3QP, England  
Telephone: (Int +44) (UK 0) 1494 525252  
Facsimile: (Int +44) (UK 0) 1494 461073  
E-mail: [info@airflow.co.uk](mailto:info@airflow.co.uk)  
Web site: [www.airflow.com](http://www.airflow.com)

iCON sales line **01494 560800**  
Website [www.iconfan.co.uk](http://www.iconfan.co.uk)

### Airflow Lufttechnik GmbH

Postfach 1208, D-53349 Rheinbach, Germany. Telefon:  
02226/9205-0, Telefax: 02226/9205-11

### Airflow Lufttechnik GmbH

o.s. Praha, Hostýnská 520,  
108 00 Praha 10 – Malešice,  
Czech Republic.  
Telefon: 02-74772230 Telefax: 02-74772370

© Airflow Developments Limited

Airflow Developments Limited reserve the right,  
in the interests of continuous development, to  
alter specifications without prior notice. All  
orders are accepted subject to our conditions  
of sale which are available on request.



Certificate No FM00152  
BS EN ISO 9001:2008



# AIRFLOW iCON™



## Footie Fan

For soccer fanatics and  
children's  
bathrooms



*Always Innovating*  
ESTABLISHED 1955