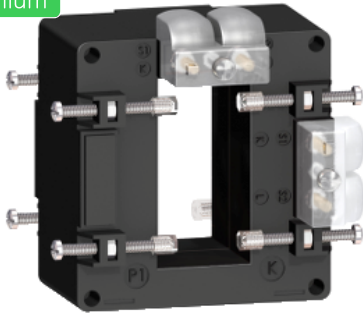


Product datasheet

Specifications



current transformer tropicalised 400 5 double output for bars 32x65

Local distributor code: 397546316 METSECT5DA040

EAN Code : 3303431123636

Main

Range	PowerLogic
Product name	CT
Product or component type	Current transformer
Secondary current	5 A
Accuracy class	Class 0.5 at 4 VA Class 1 at 8 VA
[In] rated current	400 A

Complementary

Current transformer type	Tropicalised for busbar
Current transformer ratio	400/5
[Ith] conventional free air thermal current	24 kA
Dynamic withstand current	2.5 Ith
Maximum safety factor	5
[Ue] rated operational voltage	< 720 V AC 50/60 Hz
[Ui] rated insulation voltage	3 kV
Mounting mode	Insulated locking screw
Mounting support	Busbar
Width	90 mm outside: 65 mm inner:
Height	94 mm outside: 32 mm inner:
Depth	40 mm frame: 87 mm total:
Net weight	0.531 kg
[Uimp] rated impulse withstand voltage	3 kV
Electrical insulation class	Class B
Opening of bars	65 x 32
Sealing	With

Environment

Standards	VDE 0414 IEC 61869-2
Product certifications	EAC CE
IP degree of protection	IP20
Relative humidity	0...95 %
Ambient air temperature for operation	-25...60 °C

Packing Units

Unit Type of Package 1	PCE
Number of Units in Package 1	1
Package 1 Height	10.4 cm
Package 1 Width	9.5 cm
Package 1 Length	10.0 cm
Package 1 Weight	480.0 g
Unit Type of Package 2	S03
Number of Units in Package 2	16
Package 2 Height	30.0 cm
Package 2 Width	30.0 cm
Package 2 Length	40.0 cm
Package 2 Weight	8.743 kg

Offer Sustainability

Sustainable offer status	Green Premium product
REACH Regulation	REACH Declaration
REACH free of SVHC	Yes
EU RoHS Directive	Compliant EU RoHS Declaration
Mercury free	Yes
China RoHS Regulation	China RoHS declaration
RoHS exemption information	Yes
Environmental Disclosure	Product Environmental Profile
Circularity Profile	End of Life Information
WEEE	The product must be disposed on European Union markets following specific waste collection and never end up in rubbish bins

Contractual warranty

Warranty	18 months
----------	-----------

Recommended replacement(s)