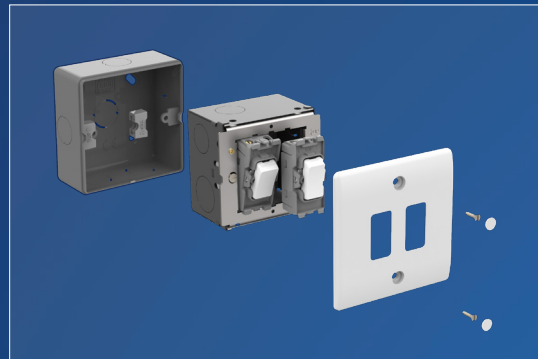


Quick & Easy to install

Step 1

Fit and secure appropriate mounting box and frame:

- Cable should be protected by using grommets or conduit in the rear box cable entries.
- Pull cabling through frame and strip insulation accordingly.
- Ensure an earth connection between frame and box.
- Systematically terminate cables into each module.
- For Metal Clad installations the grid frames should have the spacers, supplied with the front-plate, positioned over the rear box lugs to locate the frame at the correct height.



Screwless Flatplate Assembly:

When fitting one or three modules to the Screwless Flatplate grid frame, the blanking strips supplied must be fitted either side of the modules to prevent access to the wiring area.

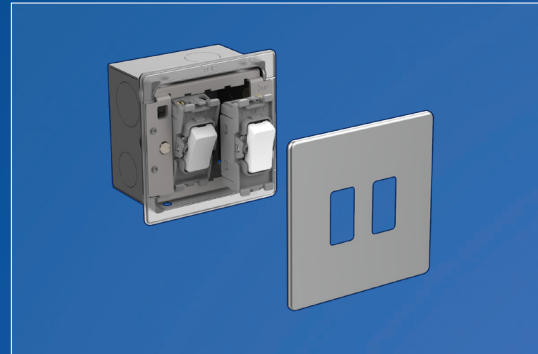
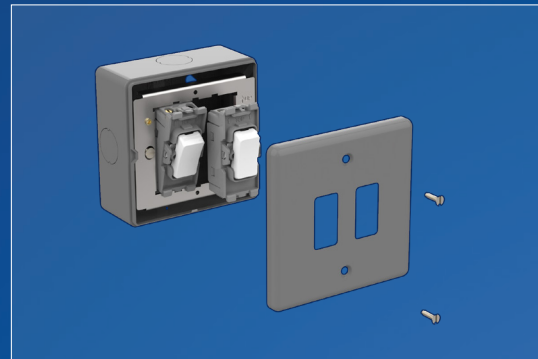
It is recommended to decorate the wall before fixing the frontplate.

Position the frontplate with the removable notch located over the angled face of the gasket in the lower right-hand corner and with the clips located in the apertures, push to secure.

Step 2

Fit modules to frame:

- Locate the smaller central tab of the module into the notch of the frame with the larger central tab behind the frame and pivot upwards and clip into place.
- Frames should be fitted to the wall box using the fixing screws provided. Check the vertical position, and tighten frame screws securely. (Do not over tighten).
- Attach the front-plate using the fixing screws provided or attach screwless plates to the fixing points provided. For Screwless installations please see the additional assembly notes.



Antimicrobial Properties

White moulded Grid plates & modules

BG Nexus white moulded wiring accessories promote a healthy environment by facilitating up to 99% reduction in bacterial development on touch point surfaces. Manufactured using high grade thermoset Urea which effectively inhibits the growth of infectious diseases, including MRSA, E-Coli, Salmonella and Klebsiella Pneumonia bacteria.



20 Amp 20AX Modules

- Simple secure 'locate & clip' fitting to frame
- Alternative printed rocker covers available
- Clearly marked terminals with backed out captive screws for easy installation
- Terminal capacity 4 x 1.0mm², 4 x 1.5mm², 2 x 2.5mm² & 1 x 4.0mm²
- Manufactured to BS EN 6609-2-1
- Minimum mounting box depth 25mm
- 20 Amp, 20AX inductive rated

White	Polished Chrome	Brushed Steel	Black Nickel	Description	Inner Carton	Outer Carton
R12	RPC12	RBS12	RBN12	2 way, single pole	10	100
R13	RPC13	RBS13	RBN13	Intermediate	10	100
R14	RPC14	RBS14	RBN14	2 way retractive, SP (PRESS)	10	100



20 Amp 20AX Modules – 3 Position

- Simple secure 'locate & clip' fitting to frame
- Clearly marked terminals with backed out captive screws for easy installation
- Terminal capacity 4 x 1.0mm², 4 x 1.5mm², 2 x 2.5mm² & 1 x 4.0mm²
- Manufactured to BS EN 6609-2-1
- Minimum mounting box depth 25mm
- 20 Amp, 20AX inductive rated

White	Polished Chrome	Brushed Steel	Black Nickel	Description	Inner Carton	Outer Carton
R12C	RPC12C	RBS12C	RBN12C	2 way, single pole, centre off	10	100
R14C	-	-	-	2 way retractive, SP (PRESS), centre off	10	100



20 Amp Double Pole Modules

- Double pole switching
- Simple secure 'locate & clip' fitting to frame
- Alternative printed rocker covers available
- Clearly marked terminals with backed out captive screws for easy installation
- Terminal capacity 4 x 1.0mm², 4 x 1.5mm², 2 x 2.5mm² & 1 x 4.0mm²
- Manufactured to BS EN 60669-2-1
- Minimum mounting box depth 25mm
- 20 Amp, 20AX inductive rate

White	Polished Chrome	Brushed Steel	Black Nickel	Description	Inner Carton	Outer Carton
R30	RPC30	RBS30	RBN30	20A double pole	10	100
R31	-	-	-	20A double pole with LED indicator	10	100



20 Amp 20AX Secret Key Modules

- Supplied with key, spare keys available
- Clearly marked terminals with backed out captive screws for easy installation
- Terminal capacity 4 x 1.0mm², 4 x 1.5mm², 2 x 2.5mm² & 1 x 4.0mm²
- Manufactured to BS EN 60669-2-1
- Minimum mounting box depth 25mm
- 20 Amp, 20AX inductive rated

White	Polished Chrome	Brushed Steel	Black Nickel	Description	Inner Carton	Outer Carton
R12KY	RPC12KY	RBS12KY	RBN12KY	2 way, single pole	10	100
R30KY	RPC30KY	RBS30KY	RBN30KY	20A double pole	10	100
R12EL	RPC12EL	RBS12EL	RBN12EL	2 way, single pole – printed "EMG LTG TEST"	10	100
RSCKY	-	-	-	Spare secret key (pack of 10)	10	100

