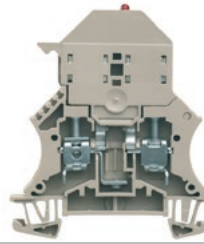


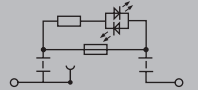
WSI 6/LD LLC

6 mm²



Width/Height/Depth	mm
max. current / max. cond. cross-section	A/mm ²
Max. clamping range	mm ²

7.9 x 60 x 71.5
6.3 / 10
0.5...10



Technical data

Rated data	
Rated voltage to adjoining terminal	V
Rated current	A
for wire cross-section	mm ²
Rated impulse withstand voltage / Pollution severity	
UL 94 flammability rating	
Approvals	
Clamped conductors (H05V/H07V)	
Solid / Stranded	mm ²
Flexible / Flexible with ferrule	mm ²
Tightening torque / Clamping screw	Nm
Blade size	

IEC 60947-7-3

IEC	UL	CSA	EN 60079-7
500			
6.3			
6	AWG 22...8	AWG 20...8	
			/ 3
			V-0

CE G B V

Rated connection	
Solid / Stranded	mm ²
Flexible / Flexible with ferrule	mm ²
Tightening torque / Clamping screw	Nm
Blade size	

Note

Ordering data

Version	
	10-36 V AC/DC, with LED
	30-70 V AC/DC, with LED
	60-150 V AC/DC, with LED
	140-250 V AC/DC, with LED

Note

Type	Qty.	Order No.
WSI 6/LD 10-36V LLC	10	1119840000
WSI 6/LD 30-70V LLC	10	1119830000
WSI 6/LD 60-150V LLC	10	1119850000
WSI 6/LD 250AC LLC	10	1119870000

Accessories

Screwable cross-connection	
	2-pole
	10-pole
	Mounting screw

End plate / Partition plate	
	dark beige
	dark beige

End bracket	
	dark beige

G-fuse cartridge, 5 x 20 mm (IEC 60127-2)	
	0.25 A fast
	0.50 A fast
	1.00 A fast
	2.00 A fast

Screwdriver	
	Standard

Marking tags

Type	Qty.	Order No.
QL 2 SAK6N	41 A 50	0194300000
QL 10 SAK6N	41 A 20	0338300000
KISC M3X20 SAK10 CU5	100	0377100000

WAP 2.5-10	50	1050000000
WAP 16+35 WTW 2.5-10	20	1050100000

WEW 35/2	50	1061200000
----------	----	------------

G 20/0.25A/F	0.25 A	10	0430500000
G 20/0.50A/F	0.5 A	10	0430600000
G 20/1.00A/F	1 A	10	0430700000
G 20/2.00A/F	2 A	10	0430900000

SDS 0.8X4.0X100	1	2749360000
-----------------	---	------------

DEK 5/8 MC NE WS	800	1856740000
WS 12/6.5 MC NE WS	540	1609920000
DEK 5/8 MM WS	500	2007130000
WS 8/8 MM WS	500	2007170000

For detailed information on other accessories and application in the online catalogue

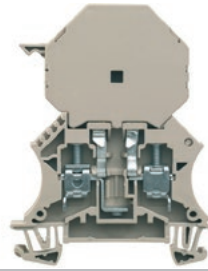


Screw connection with clamping yoke technology (W-Series)

Fuse terminal blocks

WSI 6/2/LD LLC

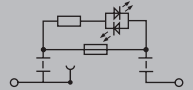
6 mm²



11.9 x 60 x 78.5

6.3 / 10

0.5...10



Width/Height/Depth	mm
max. current / max. cond. cross-section	A/mm ²
Max. clamping range	mm ²

Technical data

Rated data	
Rated voltage to adjoining terminal	V
Rated current	A
for wire cross-section	mm ²
Rated impulse withstand voltage / Pollution severity	
UL 94 flammability rating	
Approvals	
Clamped conductors (H05V/H07V)	
Solid / Stranded	mm ²
Flexible / Flexible with ferrule	mm ²
Tightening torque / Clamping screw	Nm
Blade size	

IEC 60947-7-3

IEC	UL	CSA	EN 60079-7
500			
6.3			
6	AWG 22...8	AWG 20...8	
			/ 3
			V-0

CE G B K

Rated connection	
Solid / Stranded	mm ²
Flexible / Flexible with ferrule	mm ²
Tightening torque / Clamping screw	Nm
Blade size	

Note

Ordering data

Version	
	10-36 V AC/DC, with LED
	30-70 V AC/DC, with LED
	60-150 V AC/DC, with LED
	140-250 V AC/DC, with LED

Note

Type	Qty.	Order No.
WSI 6/2/LD 10-36V LLC	25	1119800000
WSI 6/2/LD 30-70V LLC	25	1119810000
WSI 6/2/LD 60-150V LLC	25	1119820000
WSI 6/2/LD 250AC LLC	25	1119790000

Accessories

Screwable cross-connection	
	2-pole
	10-pole
	Lock washer
	Mounting screw
End plate / Partition plate	
	dark beige
	dark beige
End bracket	
	dark beige
Screwdriver	
	Standard
Marking tags	

Type	Qty.	Order No.
QL 2 SAK16	76 A 50	0470700000
QL 10 SAK16	76 A 20	0471000000
SS M3 D 128-A 3	50	0164400000
KISC M3X5	100	1052100000
WAP 2.5-10	50	1050000000
WAP 16*35 WTW 2.5-10	20	1050100000
WEW 35/2	50	1061200000
SDS 0.8X4.0X100	1	2749360000
DEK 5/8 MC NE WS	800	1856740000
WS 12/6.5 MC NE WS	540	1609920000

For detailed information on other accessories and application in the online catalogue

WSI 25 10x38

25 mm²

WSI 25 CC

25 mm²



Width/Height/Depth	mm
max. current / max. cond. cross-section	A/mm ²
Max. clamping range	mm ²

18 x 81 x 58
32 / 25
1.5...25

18 x 81 x 58
32 / 25
1.5...25

Technical data

Rated data	
Rated voltage to adjoining terminal	V
Rated current	A
for wire cross-section	mm ²
Rated impulse withstand voltage / Pollution severity	
UL 94 flammability rating	
Approvals	
Clamped conductors (H05V/H07V)	
Solid / Stranded	mm ²
Flexible / Flexible with ferrule	mm ²
Tightening torque / Clamping screw	Nm
Blade size	

IEC 60947-7-3			
IEC	UL	CSA	EN 60079-7
690			
32			
25		AWG 18...3	
		6 kV / 3	
		V-0	
CE			
Rated connection			
1.5...25 / 1.5...25			
1.5...25 / 1.5...25			
2...2.5 /			

IEC 60947-7-3			
IEC	UL	CSA	EN 60079-7
690			
32			
25		AWG 18...3	
		6 kV / 3	
		V-0	
CE			
Rated connection			
1.5...25 / 1.5...25			
1.5...25 / 1.5...25			
2...2.5 /			

Note

Note

Note

Ordering data

Version	
1-pole, without LED	
2-pole, without LED	
3-pole, without LED	
1-pole, with LED	

Type	Qty.	Order No.
WSI 25/1 10X38	12	1966020000
WSI 25/2 10X38	6	1966090000
WSI 25/3 10X38	4	1966080000
WSI 25/1 10X38/LED 690V	12	1966060000

Type	Qty.	Order No.
WSI 25/1 CC	12	1966050000
WSI 25/2 CC	6	1966040000
WSI 25/3 CC	4	1966030000
WSI 25/1 CC/LED	12	1966070000

Note

Note

Note

Accessories

Marking tags	
Marking tags	
End bracket	
dark beige	

Type	Qty.	Order No.
ESG 6/15 K MC NE WS	200	1880100000
WEW 35/2	50	1061200000

Type	Qty.	Order No.
ESG 6/15 K MC NE WS	200	1880100000
WEW 35/2	50	1061200000

For detailed information on other accessories and application in the online catalogue

For detailed information on other accessories and application in the online catalogue

For detailed information on other accessories and application in the online catalogue

