

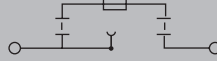
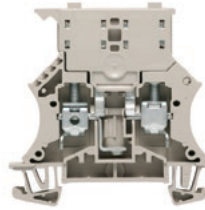
WSI 6

6 mm²

WSI 6

Metric fuses

Overload and short-circuit protection



Width/Height/Depth	mm
max. current / max. cond. cross-section	A/mm ²
Max. clamping range	mm ²

7.9 x 60 x 61
6.3 / 10
0.5...10

Technical data

Rated data	
Rated voltage to adjoining terminal	V
Rated current	A
for wire cross-section	mm ²
Rated impulse withstand voltage / Pollution severity	
UL 94 flammability rating	
Approvals	
Clamped conductors (H05V/H07V)	
Solid / Stranded	mm ²
Flexible / Flexible with ferrule	mm ²
Tightening torque / Clamping screw	Nm
Blade size	

IEC 60947-7-3, IEC 60947-7-1

IEC	UL	CSA	EN 60079-7
500	600 (C)	600 (C)	
6.3	9.5	10	
6	AWG 22...8	AWG 20...8	
6 kV / 3			
V-0			

CE CB IEC KEMA VDE TÜV

Rated connection	
0.5...10 / 1.5...10	
0.5...10 / 0.5...6	
0.8...1.6 / (M 3.5)	
0.8 x 4.0 mm	

Note

Ordering data

Version	
	500 V AC/DC, without LED
	10-36 V AC/DC, with LED
	30-70 V AC/DC, with LED
	60-150 V AC/DC, with LED
	140-250 V AC/DC, with LED
Note	

Type	Qty.	Order No.
WSI 6	50	1011000000
Note		

Accessories

Screwable cross-connection	
	2-pole
	10-pole
	Lock washer
	Mounting screw
End plate / Partition plate	
	dark beige
	dark beige
Screwdriver	
	Standard
End bracket	
	dark beige
G-fuse cartridge, 5 x 20 mm (IEC 60127-2)	
	0.25 A fast
	0.50 A fast
	1.00 A fast
	2.00 A fast
Marking tags	

Type	Qty.	Order No.
QL 2 SAK6N	41 A 50	0194300000
QL 10 SAK6N	41 A 20	0338300000
SS M3 D 128-A 3	50	0164400000
KISC M3X5	100	1052100000
WAP 2.5-10	50	1050000000
WAP 16+35 WTW 2.5-10	20	1050100000
SDS 0.8X4.0X100	1	2749360000
WEW 35/2	50	1061200000
G 20/0.25A/F	0.25 A 10	0430500000
G 20/0.50A/F	0.5 A 10	0430600000
G 20/1.00A/F	1 A 10	0430700000
G 20/2.00A/F	2 A 10	0430900000
DEK 5/8 MC NE WS	800	1856740000
WS 12/6.5 MC NE WS	540	1609920000
DEK 5/8 MM WS	500	2007130000
WS 8/8 MM WS	500	2007170000

Type	Order No.
WSI 6	1011000000

Arrangement	Applications			
	Only short-circuit protection		Overload and short-circuit protection	
	T _A max.	Nominal values	T _A max.	Nominal values
Individual	42 °C	4.0 W / 6.3 A	31 °C	1.6 W / 3.0 A
In combination	36 °C	2.5 W / 6.3 A	27 °C	1.6 W / 3.0 A

For detailed information on other accessories and application in the online catalogue



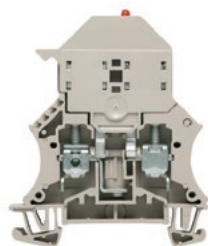
Screw connection with clamping yoke technology (W-Series)

Fuse terminal blocks

WSI 6 LED

6 mm²

Metric fuses / bipolar LED

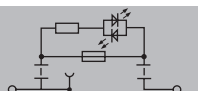


WSI 6 LED

Overload and short-circuit protection

Width/Height/Depth	mm
max. current / max. cond. cross-section	A/mm ²
Max. clamping range	mm ²

7.9 x 60 x 71.5
6.3 / 10
0.5...10



Technical data

Rated data	
Rated voltage to adjoining terminal	V
Rated current	A
for wire cross-section	mm ²
Rated impulse withstand voltage / Pollution severity	
UL 94 flammability rating	
Approvals	
Clamped conductors (H05V/H07V)	
Solid / Stranded	mm ²
Flexible / Flexible with ferrule	mm ²
Tightening torque / Clamping screw	Nm
Blade size	

IEC 60947-7-3

IEC	UL	CSA	EN 60079-7
500			
6.3			
6	AWG 22...8	AWG 20...8	
6 kV / 3			
V-0			

CE, RoHS, REACH, VDE, TÜV

Rated connection	
0.5...10 / 1.5...10	
0.5...10 / 0.5...6	
0.8...1.6 / (M 3.5)	
0.8 x 4.0 mm	

Note

Ordering data

Version	
	500 V AC/DC, without LED
	10-36 V AC/DC, with LED
	30-70 V AC/DC, with LED
	60-150 V AC/DC, with LED
	140-250 V AC/DC, with LED

Note

Type	Qty.	Order No.
WSI 6/LD 10-36V DC/AC	10	1011300000
WSI 6/LD 30-70V DC/AC	10	1012200000
WSI 6/LD 60-150V DC/AC	10	1012300000
WSI 6/LD 250AC	10	1012400000

Accessories

Screwable cross-connection	
	2-pole
	10-pole
	Lock washer
	Mounting screw
End plate / Partition plate	
	dark beige
	dark beige
Screwdriver	
	Standard
End bracket	
	dark beige
G-fuse cartridge, 5 x 20 mm (IEC 60127-2)	
	0.25 A fast
	0.50 A fast
	1.00 A fast
	2.00 A fast
Marking tags	

Type	Qty.	Order No.
QL 2 SAK6N	41 A 50	0194300000
QL 10 SAK6N	41 A 20	0338300000
SS M3 D 128-A 3	50	0164400000
KISC M3X5	100	1052100000
WAP 2.5-10	50	1050000000
WAP 16+35 WTW 2.5-10	20	1050100000
SDS 0.8X4.0X100	1	2749360000
WEW 35/2	50	1061200000
G 20/0.25A/F	0.25 A 10	0430500000
G 20/0.50A/F	0.5 A 10	0430600000
G 20/1.00A/F	1 A 10	0430700000
G 20/2.00A/F	2 A 10	0430900000
DEK 5/8 MC NE WS	800	1856740000
WS 12/6.5 MC NE WS	540	1609920000
DEK 5/8 MM WS	500	2007130000
WS 8/8 MM WS	500	2007170000

For detailed information on other accessories and application in the online catalogue

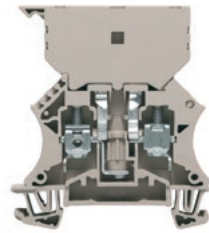
Type	Order No.
WSI 6/LD 10-36V DC/AC	1011300000

Arrangement	Applications			
	Only short-circuit protection		Overload and short-circuit protection	
	T _A max.	Nominal values	T _A max.	Nominal values
Individual	42 °C	4.0 W / 6.3 A	31 °C	1.6 W / 3.0 A
In combination	36 °C	225 W / 6.3 A	27 °C	1.6 W / 3.0 A

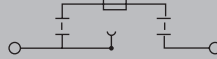
WSI 6/2

6 mm²

Imperial fuses



11.9 x 60 x 66.5
6.3 / 10
0.5...10



WSI 6/2

Overload and short-circuit protection

Width/Height/Depth	mm
max. current / max. cond. cross-section	A/mm ²
Max. clamping range	mm ²

Technical data

Rated data	
Rated voltage to adjoining terminal	V
Rated current	A
for wire cross-section	mm ²
Rated impulse withstand voltage / Pollution severity	
UL 94 flammability rating	
Approvals	
Clamped conductors (H05V/H07V)	
Solid / Stranded	mm ²
Flexible / Flexible with ferrule	mm ²
Tightening torque / Clamping screw	Nm
Blade size	

Note

Ordering data

Version	
	500 V AC/DC, without LED
	10-36 V AC/DC, with LED
	30-70 V AC/DC, with LED
	60-150 V AC/DC, with LED
	140-250 V AC/DC, with LED
Note	

Accessories

Screwable cross-connection	
	2-pole
	10-pole
	Lock washer
	Mounting screw
End plate / Partition plate	
	dark beige
	dark beige
Marking tags	

IEC 60947-7-3, IEC 60947-7-1

IEC	UL	CSA	EN 60079-7
500	600 (C)	150 (C)	
6.3	16	16	
6	AWG 22...8	AWG 20...6	
6 kV / 3			
V-0			

CE, RoHS, REACH, VDE, IEC, UL, CSA, EN

Rated connection	
	0.5...10 / 1.5...10
	0.5...10 / 0.5...6
	0.8...1.6 / (M 3.5)
	0.8 x 4.0 mm

Type	Qty.	Order No.
WSI 6/2 GZ/DEF63	25	1014000000

Type	Qty.	Order No.
QL 2 SAK16	76 A 50	0470700000
QL 10 SAK16	76 A 20	0471000000
SS M3 D 128-A 3	50	0164400000
KISC M3X5	100	1052100000
WAP 2.5-10	50	1050000000
WAP 16+35 WTW 2.5-10	20	1050100000
DEK 5/8 MC NE WS	800	1856740000
WS 12/6.5 MC NE WS	540	1609920000

Type	Order No.
WSI 6/2 GZ/DEF63	1014000000

Arrangement	Applications			
	Only short-circuit protection		Overload and short-circuit protection	
	T _A max.	Nominal values	T _A max.	Nominal values
Individual	52 °C	4.0 W / 10.0 A	42 °C	2.5 W / 2.5 A
In combination	62 °C	2.5 W / 2.5 A	30 °C	2.5 W / 2.5 A

For detailed information on other accessories and application in the online catalogue

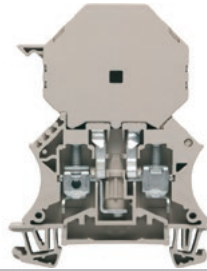
Screw connection with clamping yoke technology (W-Series)

Fuse terminal blocks

WSI 6/2 LED

6 mm²

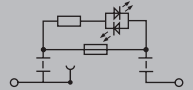
Imperial fuses / bipolar LED



11.9 x 60 x 78.5

6.3 / 10

0.5...10



WSI 6/2 LED

Overload and short-circuit protection

Width/Height/Depth	mm
max. current / max. cond. cross-section	A/mm ²
Max. clamping range	mm ²

Technical data

Rated data	
Rated voltage to adjoining terminal	V
Rated current	A
for wire cross-section	mm ²
Rated impulse withstand voltage / Pollution severity	
UL 94 flammability rating	
Approvals	
Clamped conductors (H05V/H07V)	
Solid / Stranded	mm ²
Flexible / Flexible with ferrule	mm ²
Tightening torque / Clamping screw	Nm
Blade size	

Note

Ordering data

Version	
500 V AC/DC, without LED	
10-36 V AC/DC, with LED	
30-70 V AC/DC, with LED	
60-150 V AC/DC, with LED	
140-250 V AC/DC, with LED	

Note

Accessories

Screwable cross-connection	
2-pole	
10-pole	
Lock washer	
Mounting screw	

End plate / Partition plate	
dark beige	
dark beige	

Marking tags	

IEC 60947-7-3

IEC	UL	CSA	EN 60079-7
500			
6.3			
6	AWG 22...8	AWG 20...6	
6 kV / 3			
V-0			

CE CB CCC ENEC VDE

Rated connection	
0.5...10 / 1.5...10	
0.5...10 / 0.5...6	
0.8...1.6 / (M 3.5)	
0.8 x 4.0 mm	

Type	Qty.	Order No.
WSI 6/2/LD 10-36V DC/AC	25	1014100000
WSI 6/2/LD 30-70V DC/AC	25	1014200000
WSI 6/2/LD 60-150VDC/AC	25	1014300000
WSI 6/2/LD 250AC	25	1014400000

Type	Qty.	Order No.
QL 2 SAK16	76 A 50	0470700000
QL 10 SAK16	76 A 20	0471000000
SS M3 D 128-A 3	50	0164400000
KISC M3x5	100	1052100000

WAP 2.5-10	50	1050000000
WAP 16+35 WTW 2.5-10	20	1050100000

DEK 5/8 MC NE WS	800	1856740000
WS 12/6.5 MC NE WS	540	1609920000

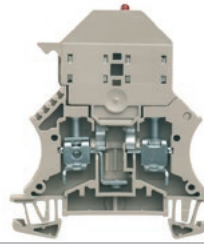
Type	Order No.
WSI 6/2/LD 10-36V DC/AC	1014100000

Arrangement	Applications			
	Only short-circuit protection		Overload and short-circuit protection	
	T _A max.	Nominal values	T _A max.	Nominal values
Individual	52 °C	4.0 W / 10.0 A	42 °C	2.5 W / 2.5 A
In combination	62 °C	2.5 W / 2.5 A	30 °C	2.5 W / 2.5 A

For detailed information on other accessories and application in the online catalogue

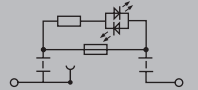
WSI 6/LD LLC

6 mm²



Width/Height/Depth	mm
max. current / max. cond. cross-section	A/mm ²
Max. clamping range	mm ²

7.9 x 60 x 71.5
6.3 / 10
0.5...10



Technical data

Rated data	
Rated voltage to adjoining terminal	V
Rated current	A
for wire cross-section	mm ²
Rated impulse withstand voltage / Pollution severity	
UL 94 flammability rating	
Approvals	
Clamped conductors (H05V/H07V)	
Solid / Stranded	mm ²
Flexible / Flexible with ferrule	mm ²
Tightening torque / Clamping screw	Nm
Blade size	

IEC 60947-7-3

IEC	UL	CSA	EN 60079-7
500			
6.3			
6	AWG 22...8	AWG 20...8	
			/ 3
			V-0

CE G B K

Rated connection	
Solid / Stranded	mm ²
Flexible / Flexible with ferrule	mm ²
Tightening torque / Clamping screw	Nm
Blade size	

Note

Ordering data

Version	
	10-36 V AC/DC, with LED
	30-70 V AC/DC, with LED
	60-150 V AC/DC, with LED
	140-250 V AC/DC, with LED

Note

Type	Qty.	Order No.
WSI 6/LD 10-36V LLC	10	1119840000
WSI 6/LD 30-70V LLC	10	1119830000
WSI 6/LD 60-150V LLC	10	1119850000
WSI 6/LD 250AC LLC	10	1119870000

Accessories

Screwable cross-connection	
	2-pole
	10-pole
	Mounting screw

End plate / Partition plate	
	dark beige
	dark beige

End bracket	
	dark beige

G-fuse cartridge, 5 x 20 mm (IEC 60127-2)	
	0.25 A fast
	0.50 A fast
	1.00 A fast
	2.00 A fast

Screwdriver	
	Standard

Marking tags

Type	Qty.	Order No.
QL 2 SAK6N	41 A 50	0194300000
QL 10 SAK6N	41 A 20	0338300000
KISC M3X20 SAK10 CU5	100	0377100000

WAP 2.5-10	50	1050000000
WAP 16+35 WTW 2.5-10	20	1050100000

WEW 35/2	50	1061200000
----------	----	------------

G 20/0.25A/F	0.25 A	10	0430500000
G 20/0.50A/F	0.5 A	10	0430600000
G 20/1.00A/F	1 A	10	0430700000
G 20/2.00A/F	2 A	10	0430900000

SDS 0.8X4.0X100	1	2749360000
-----------------	---	------------

DEK 5/8 MC NE WS	800	1856740000
WS 12/6.5 MC NE WS	540	1609920000
DEK 5/8 MM WS	500	2007130000
WS 8/8 MM WS	500	2007170000

For detailed information on other accessories and application in the online catalogue

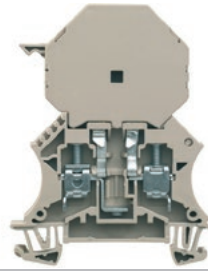


Screw connection with clamping yoke technology (W-Series)

Fuse terminal blocks

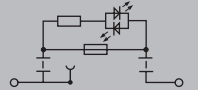
WSI 6/2/LD LLC

6 mm²



Width/Height/Depth	mm
max. current / max. cond. cross-section	A/mm ²
Max. clamping range	mm ²

11.9 x 60 x 78.5
6.3 / 10
0.5...10



Technical data

Rated data	
Rated voltage to adjoining terminal	V
Rated current	A
for wire cross-section	mm ²
Rated impulse withstand voltage / Pollution severity	
UL 94 flammability rating	
Approvals	
Clamped conductors (H05V/H07V)	
Solid / Stranded	mm ²
Flexible / Flexible with ferrule	mm ²
Tightening torque / Clamping screw	Nm
Blade size	

IEC 60947-7-3

IEC	UL	CSA	EN 60079-7
500			
6.3			
6	AWG 22...8	AWG 20...8	
			/ 3
			V-0

CE G B V

Rated connection	
Solid / Stranded	mm ²
Flexible / Flexible with ferrule	mm ²
Tightening torque / Clamping screw	Nm
Blade size	

Note

Ordering data

Version	
	10-36 V AC/DC, with LED
	30-70 V AC/DC, with LED
	60-150 V AC/DC, with LED
	140-250 V AC/DC, with LED

Type	Qty.	Order No.
WSI 6/2/LD 10-36V LLC	25	1119800000
WSI 6/2/LD 30-70V LLC	25	1119810000
WSI 6/2/LD 60-150V LLC	25	1119820000
WSI 6/2/LD 250AC LLC	25	1119790000

Note

Accessories

Screwable cross-connection	
	2-pole
	10-pole
	Lock washer
	Mounting screw
End plate / Partition plate	
	dark beige
	dark beige
End bracket	
	dark beige
Screwdriver	
	Standard
Marking tags	

Type	Qty.	Order No.
QL 2 SAK16	76 A 50	0470700000
QL 10 SAK16	76 A 20	0471000000
SS M3 D 128-A 3	50	0164400000
KISC M3X5	100	1052100000
WAP 2.5-10	50	1050000000
WAP 16*35 WTW 2.5-10	20	1050100000
WEW 35/2	50	1061200000
SDS 0.8X4.0X100	1	2749360000
DEK 5/8 MC NE WS	800	1856740000
WS 12/6.5 MC NE WS	540	1609920000

For detailed information on other accessories and application in the online catalogue

