

Shielding and earthing
Functional earth – Screw connection

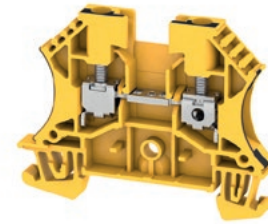
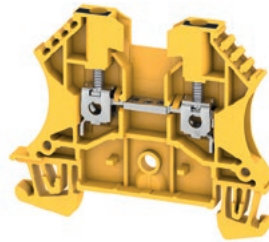


WDU 2.5

2.5 mm²

WDU 4

4 mm²



Width/Height/Depth	mm
max. current / max. cond. cross-section	A/mm ²
Max. clamping range	mm ²

5.1 x 60 x 46.5	
32 / 4	
0.05...4	

6.1 x 60 x 46.5	
41 / 6	
0.13...6	

Technical data

Rated data	
Rated voltage	V
Rated current	A
for wire cross-section	mm ²
Rated impulse withstand voltage / Pollution severity	
Gauge to IEC 60947-1 / UL 94 flammability rating	

IEC 60947-1	UL	CSA	EN 60079-7
800			
24			
2.5			
8 kV / 3			
A3 / V-0			

IEC 60947-1	UL	CSA	EN 60079-7
800			690
32			32
4			4 mm ²
8 kV / 3			
A4 / V-0			

Approvals	
Clamped conductors (H05V/H07V)	
Solid / Stranded	mm ²
Flexible / Flexible with ferrule	mm ²
Tightening torque / Clamping screw	Nm
Stripping length / Blade size	mm/-
2 conductors with same cross-section (H05V/H07V)	
Solid / Stranded	mm ²
Flexible / Flexible with ferrule	mm ²
Note	

Approvals	
Rated connection	
0.5...4 / 1.5...4	
0.5...4 / 0.5...2.5	
0.4...0.8 / (M 2.5)	
10 / 0.6 x 3.5 mm	
Further connection	
0.5...1.5	
0.5...1.5 / 0.5...1.5	

Approvals	
Rated connection	
0.5...6 / 1.5...6	
0.5...6 / 0.5...4	
0.5...1 / (M 3)	
10 / 0.6 x 3.5 mm	
Further connection	
0.5...1.5 / 0.5...1.5	

Ordering data

Version	yellow/black
Note	

Type	Qty.	Order No.
WDU 2.5 GE/SW	100	2429520000

Type	Qty.	Order No.
WDU 4 GE/SW	100	1020190000

Accessories

Plug-in cross-connection	
	2-pole
	10-pole
	2-pole
	10-pole
Screwable cross-connection	
	2-pole
	10-pole
End plate / Partition plate	
	dark beige
	Blue
	dark beige
	Blue
End bracket	
	dark beige
Testing / Checking	
	Standard
	With spigot
Cover	
	Blank, yellow
	Blank, white
Marking tags	

Type	Qty.	Order No.
ZQV 2.5N/2	24 A 60	1527540000
ZQV 2.5N/10	24 A 20	1527690000
WQV		
WQV 2.5/2	32 A 50	1053660000
WQV 2.5/10	32 A 20	1054460000
WAP		
WAP 2.5-10	50	1050000000
WAP 2.5-10 BL	50	1050080000
WAP 16+35 WTW 2.5-10	20	1050100000
WAP 16+35 WTW 2.5-10 BL	20	1050180000
WEW		
WEW 35/2	50	1061200000
WTA		
WTA 2 WDU2.5-10	6 A 25	1632320000
WTA 2/ZA WDU2.5-10	6 A 25	1632330000
WAD		
WAD 5 MC NE GE	48	1112920000
WAD 5 MC NE WS	48	1112910000
DEK		
DEK 5/5 MC NE WS	1000	1609801044
WS 12/5 MC NE WS	720	1609860000
DEK 5/5 MM WS	800	2007110000
WS 8/5 MM WS	800	2007150000

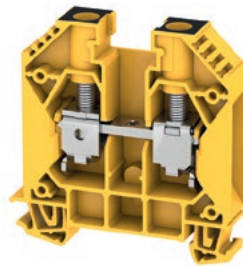
Type	Qty.	Order No.
ZQV 4N/2	32 A 60	1527930000
ZQV 4N/10	32 A 20	1528090000
WQV		
WQV 4/2	41 A 50	1051960000
WQV 4/10	41 A 20	1052060000
WAP		
WAP 2.5-10	50	1050000000
WAP 2.5-10 BL	50	1050080000
WAP 16+35 WTW 2.5-10	20	1050100000
WAP 16+35 WTW 2.5-10 BL	20	1050180000
WEW		
WEW 35/2	50	1061200000
WTA		
WTA 3 WDU4	6 A 25	1632350000
WTA 3/ZA WDU4	6 A 25	1632360000
WAD		
WAD 5 MC NE GE	48	1112920000
WAD 5 MC NE WS	48	1112910000
DEK		
DEK 5/6 MM WS	600	2007120000
WS 12/6 MC NE WS	600	1609900000

For detailed information on other accessories and application in the online catalogue

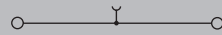


WDU 16

16 mm²



11.9 x 60 x 62.5
101 / 25
0.82...25



IEC 60947-7-1 Ex eb II C Gb II 2 G D

IEC	UL	CSA	EN 60079-7
1000			690
76			76
16			16 mm ²

8 kV / 3
B7 / V-0

DEMKO14ATEX1338U

Rated connection	Further connection
1.5...16 / 1.5...25	
1.5...25 / 1.5...16	
3...4 / (M 5)	
16 / 1.0 x 5.5 mm	

2 conductors with same cross-section (H05V/H07V)
Solid / Stranded mm ²
Flexible / Flexible with ferrule mm ²
Tightening torque / Clamping screw Nm
Stripping length / Blade size mm/-

Solid / Stranded mm ²	1.5...6 / 1.5...6
Flexible / Flexible with ferrule mm ²	1.5...6 / 1.5...6

Width/Height/Depth	mm
max. current / max. cond. cross-section	A/mm ²
Max. clamping range	mm ²

Technical data

Rated data	
Rated voltage	V
Rated current	A
for wire cross-section	mm ²
Rated impulse withstand voltage / Pollution severity	
Gauge to IEC 60947-1 / UL 94 flammability rating	

Approvals

Clamped conductors (H05V/H07V)	
Solid / Stranded	mm ²
Flexible / Flexible with ferrule	mm ²
Tightening torque / Clamping screw	Nm
Stripping length / Blade size	mm/-

Note

Ordering data

Version	
	yellow/black

Note

Accessories

Screwable cross-connection	
	2-pole
	3-pole
	4-pole
	10-pole
End plate / Partition plate	
	dark beige
	Blue
End bracket	
	dark beige, screwable
	dark beige
Cover	
	black/yellow
	white
	With lightning flash symbol
	Blank, white
Additional connection	
	4mm ²
	10 mm ²
Marking tags	
	DEK 5/5 MC NE WS 1000 1609801044
	WS 12/6.5 MC NE WS 540 1609920000
Testing / Checking	Standard

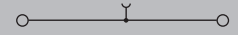
For detailed information on other accessories and application in the online catalogue

WDU 16N

16 mm²



12 x 60 x 46.5
101 / 25
1.5...25



IEC 60947-7-1

IEC	UL	CSA	EN 60079-7
690			600
76			70
16			AWG 14...6

8 kV / 3
B7 / V-0

Rated connection	Further connection
1.5...16 / 1.5...25	
1.5...16 / 1.5...16	
1.2...2.4 / (M 4)	
12 / 1.0 x 5.5 mm	

Solid / Stranded mm ²	1.5...6 / 1.5...6
Flexible / Flexible with ferrule mm ²	1.5...6 / 1.5...6

Type	Qty.	Order No.
WDU 16N GE/SW	50	2000050000

Type	Qty.	Order No.
WQV 16N/2	76 A 50	1636560000
WQV 16N/4	76 A 50	1636580000
WTW EN	20	1058800000
WEW 35/2	50	1061200000
WAD 12N GE BED	50	1073200000
WAD 12N WS	50	1073290000
DEK 5/5 MC NE WS	1000	1609801044
WS 10/12 MC NE WS	300	1905970000
WTA 2 WDU 2.5-10	6 A 25	1632320000



Shielding and earthing
Functional earth – Screw connection

Application range



Width/Height/Depth	mm
max. current / max. cond. cross-section	A/mm ²
Max. clamping range	mm ²

Technical data

Rated data	
Rated voltage	V
Rated current	A
for wire cross-section	mm ²
Rated impulse withstand voltage / Pollution severity	
Gauge to IEC 60947-1 / UL 94 flammability rating	
Approvals	
Clamped conductors (H05V/H07V)	
Solid / Stranded	mm ²
Flexible / Flexible with ferrule	mm ²
Tightening torque / Clamping screw	Nm
Stripping length / Blade size	mm/-
2 conductors with same cross-section (H05V/H07V)	
Solid / Stranded	-
Flexible / Flexible with ferrule	-
Note	

Ordering data

Version	yellow/black
Note	

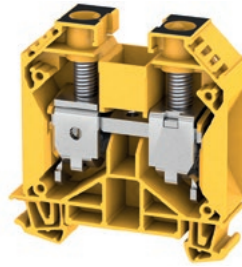
Accessories

Screwable cross-connection	2-pole 3-pole 4-pole 10-pole
End plate / Partition plate	dark beige Blue
End bracket	dark beige, screwable dark beige
Cover	black/yellow white With lightning flash symbol Blank, white
Additional connection	4mm ² 10mm ²
Marking tags	
Testing / Checking	Standard

For detailed information on other accessories and application in the online catalogue

WDU 35

35 mm²



16 x 60 x 62.5	
150 / 50	
2.5...50	

IEC 60947-7-1				Ex eb II	C Gb	Ex	II 2 G D
IEC	UL	CSA	EN 60079-7				
1000			690				
125			115				
35			35 mm ²				
				8 kV / 3			
				B8 / V-0			
CE, C, ENEC, KEMA				DEMKO14ATEX1338U			
Rated connection		Further connection					
2.5...16 / 2.5...50							
2.5...35 / 2.5...35							
4...5 / (M 6)							
18 / 6.5 x 1.2 mm							
Note							

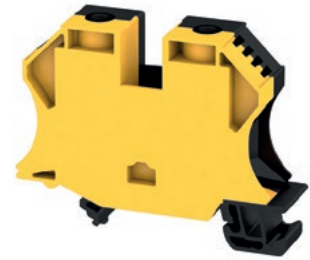
Type	Qty.	Order No.
WDU 35 GE/SW	40	2000060000

Type	Qty.	Order No.
WQV 35/2	138 A 50	1053060000
WQV 35/10	112 A 10	1053160000
WAP 16+35 WTW 2.5-10	20	1050100000
WAP 16+35 WTW 2.5-10 BL	20	1050180000
WEW 35/1	50	1059000000
WAD 12 MC B GE/SW	32	2445090000
WAD 12 MC NE WS	32	2445070000
DEK 5/5 MC NE WS	1000	1609801044
WS 12/6.5 MC NE WS	540	1609920000

For detailed information on other accessories and application in the online catalogue

WDU 35N

35 mm²



16 x 66 x 50.5	
150 / 50	
2.5...50	

IEC 60947-7-1				Ex eb II	C Gb	Ex	II 2 G D
IEC	UL	CSA	EN 60079-7				
500			352				
125			110				
35			35 mm ²				
				6 kV / 3			
				B8 / V-0			
CE, C, ENEC, KEMA				DEMKO14ATEX1338U			
Rated connection		Further connection					
2.5...16 / 2.5...50							
2.5...35 / 2.5...35							
4...5 / (M 6)							
18 / 6.5 x 1.2 mm							
Note							

Type	Qty.	Order No.
WDU 35N GE/SW	20	2000090000

Type	Qty.	Order No.
WQV 35N/2	125 A 20	1079200000
WQV 35N/4	125 A 20	1079400000
WTW EN	20	1058800000
WEW 35/2	50	1061200000
WAD 16N GE BED	50	1083600000
DEK 5/5 MC NE WS	1000	1609801044
WS 12/6.5 MC NE WS	540	1609920000

For detailed information on other accessories and application in the online catalogue