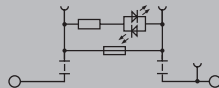


WFS 4 LED

4 mm<sup>2</sup>

WFS 4 LED

Overload and short-circuit protection



Width/Height/Depth	mm
max. current / max. cond. cross-section	A/mm <sup>2</sup>
Max. clamping range	mm <sup>2</sup>

6.1 x 62.5 x 75  
6.3 / 6  
0.22...6

Technical data

<b>Rated data</b>	
Rated voltage to adjoining terminal	V
Rated current	A
for wire cross-section	mm <sup>2</sup>
Rated impulse withstand voltage / Pollution severity	
UL 94 flammability rating	
Approvals	
<b>Clamped conductors (H05V/H07V)</b>	
Solid / Stranded	mm <sup>2</sup>
Flexible / Flexible with ferrule	mm <sup>2</sup>
Tightening torque / Clamping screw	Nm
Blade size	

IEC 60947-7-3

IEC	UL	CSA	EN 60079-7
400	300 (D)	300 (D)	
6.3	10	10	
4	AWG 22...10	AWG 22...10	6 mm <sup>2</sup>
6 kV / 3			
V-0			

CE TÜV20ATEX8502U

<b>Rated connection</b>	
0.5...6 / 1.5...6	
0.5...4 / 0.5...4	
0.5...0.6 / (M 3)	
0.6 x 3.5 mm	

Note

Ordering data

<b>Version</b>	
10-36 V AC/DC, with LED	
30-70 V AC/DC, with LED	
60-150 V AC/DC, with LED	
100 - 250 V AC/DC, with LED	

Note

Type	Qty.	Order No.
WFS 4 10-36V	50	2562070000
WFS 4 30-70V	50	2561990000
WFS 4 60-150V	50	2561970000
WFS 4 100-250V	50	2561960000

Accessories

<b>End plate / Partition plate</b>	
dark beige	
<b>End bracket</b>	
dark beige	
<b>Screwdriver</b>	
With "swifty set" cutting device	
Standard	
<b>G-fuse cartridge, 5 x 20 mm (IEC 60127-2)</b>	
0.25 A fast	
0.50 A fast	
1.00 A fast	
<b>Marking tags</b>	

Type	Qty.	Order No.
WAP 2.5-10	50	1050000000
WEW 35/2	50	1061200000
SWIFTY SET	1	9006060000
SDS 0.6X3.5X100	1	2749340000
G 20/0.25A/F	0.25 A 10	0430500000
G 20/0.50A/F	0.5 A 10	0430600000
G 20/1.00A/F	1 A 10	0430700000
DEK 5/6 MC NE WS	1000	1609820000
WS 12/6 MC NE WS	600	1609900000

For detailed information on other accessories and application in the online catalogue

