

# Screw connection with clamping yoke technology (W-Series)

## PE terminal blocks

Universal range

A

### WDK 2.5 PE

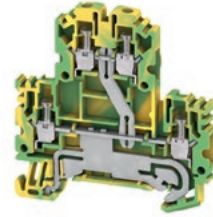
2.5 mm<sup>2</sup>



### WDK 2.5N PE

2.5 mm<sup>2</sup>

Compact design



Width/Height/Depth	mm
max. current / max. cond. cross-section	-/mm <sup>2</sup>
Max. clamping range	mm <sup>2</sup>

5.1 x 69.5 x 62.5	
/ 4	
0.05...4	

5.1 x 60.7 x 54.95	
/ 4	
0.05...4	

#### Technical data

Rated data	
for wire cross-section	mm <sup>2</sup>
Rated voltage to adjoining terminal	V
Rated impulse withstand voltage to adjacent terminal	kV
Rated short-time current	
Pollution severity	
Gauge to IEC 60947-1 / UL 94 flammability rating	
Approvals	

IEC 60947-7-2	Ex eb II	C Gb		II 2 G D
IEC	UL	CSA	EN 60079-7	
2.5	AWG 22...12	AWG 26...12	4 mm <sup>2</sup>	
400				
6				
	300 A (2.5 mm <sup>2</sup> )			
	3			
	A3 / V-0			

IEC 60947-7-2	Ex eb II	C Gb		II 2 G D
IEC	UL	CSA	EN 60079-7	
2.5		AWG 26...12	4 mm <sup>2</sup>	
800				
8				
	300 A (2.5 mm <sup>2</sup> )			
	3			
	A3 / V-0			

#### Clamped conductors (H05V/H07V)

Solid / Stranded	mm <sup>2</sup>
Flexible / Flexible with ferrule	mm <sup>2</sup>
Tightening torque / Clamping screw	Nm
Stripping length / Blade size	mm

Rated connection	
0.5...4 / 1.5...4	
0.5...4 / 0.5...2.5	
0.4...0.6 / (M 2.5)	
10 / 0.6 x 3.5 mm	

Rated connection	
0.5...4 / 1.5...4	
0.5...4 / 0.5...2.5	
0.4...0.6 / (M 2.5)	
8 / 0.6 x 3.5 mm	

#### Note

#### Ordering data

Version	green/yellow
Note	

Type	Qty.	Order No.
WDK 2.5PE	50	1036300000

Type	Qty.	Order No.
WDK 2.5N PE	50	1041620000

#### Accessories

Screwable cross-connection	
	2-pole
	10-pole
End plate / Partition plate	
	dark beige
	Blue
	dark beige
End bracket	
	dark beige
Screwdriver	
	Standard
Marking tags	
Cover	
	Blank, white
	Blank, yellow

Type	Qty.	Order No.
WQV 2.5/2	32 A 50	1053660000
WQV 2.5/10	32 A 20	1054460000
WAP WDK2.5	20	1059100000
WEW 35/2	50	1061200000
SDS 0.6X3.5X100	1	2749340000
DEK 5/5 MC NE WS	1000	1609801044
WS 8/5 MC NE WS	720	1640740000
DEK 5/5 MM WS	800	2007110000

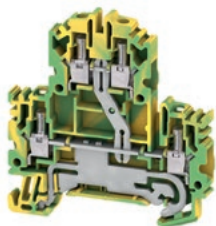
Type	Qty.	Order No.
WAP WDK2.5/4 N	20	1084000000
WAP WDK2.5/4 N BL	20	1084080000
WTW EN	20	1058800000
WEW 35/2	50	1061200000
SDS 0.6X3.5X100	1	2749340000
DEK 5/5 MC NE WS	1000	1609801044
WS 8/5 MC NE WS	720	1640740000
DEK 5/5 MM WS	800	2007110000

For detailed information on other accessories and application in the online catalogue

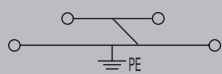
**WDK 4N PE**

**4 mm<sup>2</sup>**

Compact design



6.1 x 60.7 x 63.25  
/ 6  
0.13...6



Ex eb II  
C Gb II 2 G D

IEC 60947-7-2

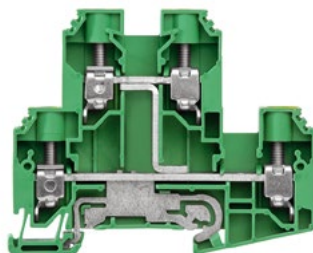
IEC	UL	CSA	EN 60079-7
4	AWG 26...10	AWG 26...10	6 mm <sup>2</sup>
800			
8			
	480 A (4 mm <sup>2</sup> )		
	3		
	A3 / V-0		

**Rated connection**

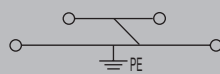
0.5...6 / 1.5...6  
0.5...4 / 1.5...4  
0.5...1 / (M 3)  
8 / 0.6 x 3.5 mm

**WDK 10 PE**

**10 mm<sup>2</sup>**



9.9 x 85 x 69  
70 / 16  
1.5...16



IEC 60947-7-2

IEC	UL	CSA	EN 60079-7
10	AWG 18...6	AWG 18...6	
800			
8			
	1200 A (10 mm <sup>2</sup> )		
	3		
	B6 / V-0		

**Rated connection**

1.5...16 / 1.5...16  
1.5...16 / 1.5...16  
1.2...1.9 / (M 4)  
12 / 1.0 x 5.5 mm

Type	Qty.	Order No.
WDK 4N PE	50	1041920000

Type	Qty.	Order No.
WDK 10 PE	50	1415470000

Type	Qty.	Order No.
WAP WDK2.5/4 N	20	1084000000
WEW 35/2	50	1061200000
SDS 0.6X3.5X100	1	2749340000
DEK 5/6 MC NE WS	1000	1609820000
WS 8/5 MM WS	800	2007150000
DEK 5/5 MM WS	800	2007110000

Type	Qty.	Order No.
WQV 10/2	76 A 50	1052560000
WQV 10/10	63 A 20	1052460000
WAP WDK10	20	1186720000
WAP WDK10 BL	20	1186730000
WEW 35/2	50	1061200000
SDS 1.0X5.5X150	1	2749380000
DEK 5/5 MC NE WS	1000	1609801044
WAD 8 MC NE WS	48	1112940000
WAD 8 MC NE GE	48	1112950000



# Screw connection with clamping yoke technology (W-Series)

## Fuse terminal blocks

WFS 4

4 mm<sup>2</sup>

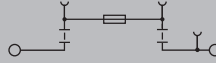
WFS 4

Overload and short-circuit protection



Width/Height/Depth	mm
max. current / max. cond. cross-section	A/mm <sup>2</sup>
Max. clamping range	mm <sup>2</sup>

6.1 x 62.5 x 75
<b>6.3 / 6</b>
<b>0.22...6</b>



### Technical data

Rated data	
Rated voltage to adjoining terminal	V
Rated current	A
for wire cross-section	mm <sup>2</sup>
Rated impulse withstand voltage / Pollution severity	
UL 94 flammability rating	
Approvals	
Clamped conductors (H05V/H07V)	
Solid / Stranded	mm <sup>2</sup>
Flexible / Flexible with ferrule	mm <sup>2</sup>
Tightening torque / Clamping screw	Nm
Blade size	

IEC 60947-7-3

IEC	UL	CSA	EN 60079-7
400	300 (D)	300 (D)	
6.3	10	10	6.3
4	AWG 22...10	AWG 22...10	6 mm <sup>2</sup>
6 kV / 3			
V-0			

CE TÜV20ATEX8502U

Rated connection	
0.5...6 / 1.5...6	
0.5...4 / 0.5...4	
0.5...0.6 / (M 3)	
0.6 x 3.5 mm	

**Note**

### Ordering data

Version	black, 500 V AC/DC, without LED
	blue, 500 V AC/DC, without LED
	dark beige, 500 V AC/DC, without LED

**Note**

Type	Qty.	Order No.
WFS 4	50	<b>2561900000</b>
WFS 4 BL	50	<b>2562000000</b>
WFS 4 DB	50	<b>2562050000</b>

### Accessories

End bracket	dark beige
Screwdriver	With "swifty set" cutting device Standard
G-fuse cartridge, 5 x 20 mm (IEC 60127-2)	0.25 A fast 0.50 A fast 1.00 A fast 2.00 A fast
Marking tags	

Type	Qty.	Order No.
WEW 35/2	50	<b>1061200000</b>
SWIFTY SET	1	<b>9006060000</b>
SDS 0.6X3.5X100	1	<b>2749340000</b>
G 20/0.25A/F	0.25 A 10	<b>0430500000</b>
G 20/0.50A/F	0.5 A 10	<b>0430600000</b>
G 20/1.00A/F	1 A 10	<b>0430700000</b>
G 20/2.00A/F	2 A 10	<b>0430900000</b>
DEK 5/6 MC NE WS	1000	<b>1609820000</b>
WS 12/6 MC NE WS	600	<b>1609900000</b>

For detailed information on other accessories and application in the online catalogue

Type	Order No.
WFS 4 10-36V	<b>2562070000</b>

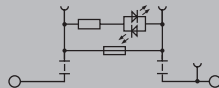
Arrangement	Applications			
	Only short-circuit protection		Overload and short-circuit protection	
	T <sub>A</sub> max.	Nominal values	T <sub>A</sub> max.	Nominal values
Individual	55 °C	4.0 W / 10 A	35 °C	2.5 W / 2.5 A
In combination	68 °C	2.5 W / 2.5 A	41 °C	1.6 W / 1.0 A

WFS 4 LED

4 mm<sup>2</sup>

WFS 4 LED

Overload and short-circuit protection



Width/Height/Depth	mm
max. current / max. cond. cross-section	A/mm <sup>2</sup>
Max. clamping range	mm <sup>2</sup>

6.1 x 62.5 x 75  
6.3 / 6  
0.22...6

Technical data

<b>Rated data</b>	
Rated voltage to adjoining terminal	V
Rated current	A
for wire cross-section	mm <sup>2</sup>
Rated impulse withstand voltage / Pollution severity	
UL 94 flammability rating	
Approvals	
<b>Clamped conductors (H05V/H07V)</b>	
Solid / Stranded	mm <sup>2</sup>
Flexible / Flexible with ferrule	mm <sup>2</sup>
Tightening torque / Clamping screw	Nm
Blade size	

Note

Ordering data

Version	10-36 V AC/DC, with LED 30-70 V AC/DC, with LED 60-150 V AC/DC, with LED 100 - 250 V AC/DC, with LED
---------	---

Note

Accessories

End plate / Partition plate	dark beige
End bracket	dark beige
Screwdriver	With "swifty set" cutting device Standard
G-fuse cartridge, 5 x 20 mm (IEC 60127-2)	0.25 A fast 0.50 A fast 1.00 A fast
Marking tags	

IEC 60947-7-3

IEC	UL	CSA	EN 60079-7
400	300 (D)	300 (D)	
6.3	10	10	
4	AWG 22...10	AWG 22...10	6 mm <sup>2</sup>
6 kV / 3			
V-0			

CE TÜV20ATEX8502U

<b>Rated connection</b>	
0.5...6 / 1.5...6	
0.5...4 / 0.5...4	
0.5...0.6 / (M 3)	
0.6 x 3.5 mm	

Type	Qty.	Order No.
WFS 4 10-36V	50	2562070000
WFS 4 30-70V	50	2561990000
WFS 4 60-150V	50	2561970000
WFS 4 100-250V	50	2561960000

Type	Qty.	Order No.
WAP 2.5-10	50	1050000000
WEW 35/2	50	1061200000
SWIFTY SET	1	9006060000
SDS 0.6X3.5X100	1	2749340000
G 20/0.25A/F	0.25 A 10	0430500000
G 20/0.50A/F	0.5 A 10	0430600000
G 20/1.00A/F	1 A 10	0430700000
DEK 5/6 MC NE WS	1000	1609820000
WS 12/6 MC NE WS	600	1609900000

Type	Order No.
WFS 4	2561900000

Arrangement	Applications			
	Only short-circuit protection		Overload and short-circuit protection	
	T <sub>A</sub> max.	Nominal values	T <sub>A</sub> max.	Nominal values
Individual	63 °C	4.0 W / 6.3 A	34 °C	1.6 W / 6.3 A
In combination	47 °C	2.5 W / 6.3 A	23 °C	1.6 W / 6.3 A

For detailed information on other accessories and application in the online catalogue

## Screw connection with clamping yoke technology (W-Series)

### Fuse terminal blocks

WSI 4

4 mm<sup>2</sup>

WSI 4

Overload and short-circuit protection



Width/Height/Depth	mm
max. current / max. cond. cross-section	A/mm <sup>2</sup>
Max. clamping range	mm <sup>2</sup>

8 x 50.7 x 42.5  
**6.3 / 4**  
**0.5...4**



#### Technical data

Rated data	
Rated voltage to adjoining terminal	V
Rated current	A
for wire cross-section	mm <sup>2</sup>
Rated impulse withstand voltage / Pollution severity	
UL 94 flammability rating	
Approvals	
Clamped conductors (H05V/H07V)	
Solid / Stranded	mm <sup>2</sup>
Flexible / Flexible with ferrule	mm <sup>2</sup>
Tightening torque / Clamping screw	Nm
Blade size	

IEC 60947-7-3

IEC	UL	CSA	EN 60079-7
500	300 (C)	300 (C)	
6.3	15	15	
4	AWG 30...12	AWG 30...12	
			6 kV / 3
			V-0

CE

Rated connection	
0.5...4 / 1.5...4	
0.5...4	
0.4...0.4 / (M 3)	
0.6 x 3.5 mm	

Note

#### Ordering data

Version	
500 V AC/DC, without LED	
10-36 V AC/DC, with LED	
30-70 V AC/DC, with LED	
60-150 V AC/DC, with LED	
140-250 V AC/DC, with LED	

Note

Type	Qty.	Order No.
WSI 4	50	1886580000
WSI 4/LD 10-36V AC/DC	50	1886590000
WSI 4/LD 30-70V AC/DC	50	1886560000
WSI 4/LD 60-150V AC/DC	50	1886570000
WSI 4/LD 140-250V AC/DC	50	1886550000

#### Accessories

End bracket	dark beige
Screwdriver	With "swifty set" cutting device Standard
G-fuse cartridge, 5 x 20 mm (IEC 60127-2)	0.25 A fast 0.50 A fast 1.00 A fast 2.00 A fast
Marking tags	

Type	Qty.	Order No.
WEW 35/2	50	1061200000
SWIFTY SET	1	9006060000
SDS 0.6X3.5X100	1	2749340000
G 20/0.25A/F	0.25 A 10	0430500000
G 20/0.50A/F	0.5 A 10	0430600000
G 20/1.00A/F	1 A 10	0430700000
G 20/2.00A/F	2 A 10	0430900000
DEK 5/5 MC NE WS	1000	1609801044
WS 12/6 MC NE WS	600	1609900000

For detailed information on other accessories and application in the online catalogue

Type	Order No.
WSI 4	1886580000

Arrangement	Applications			
	Only short-circuit protection		Overload and short-circuit protection	
	T <sub>A</sub> max.	Nominal values	T <sub>A</sub> max.	Nominal values
Individual	63 °C	4.0 W / 6.3 A	34 °C	1.6 W / 6.3 A
In combination	47 °C	2.5 W / 6.3 A	23 °C	1.6 W / 6.3 A

WSI 4 Ex

4 mm<sup>2</sup>



Width/Height/Depth	mm
max. current / max. cond. cross-section	A/mm <sup>2</sup>
Max. clamping range	mm <sup>2</sup>

8 x 50.7 x 42.5  
**6.3 / 4**  
**0.5...4**



### Technical data

Rated data	
Rated voltage to adjoining terminal	V
Rated current	A
for wire cross-section	mm <sup>2</sup>
Rated impulse withstand voltage / Pollution severity	
UL 94 flammability rating	
Approvals	
Clamped conductors (H05V/H07V)	
Solid / Stranded	mm <sup>2</sup>
Flexible / Flexible with ferrule	mm <sup>2</sup>
Tightening torque / Clamping screw	Nm
Blade size	

IEC 60947-7-3

Ex ec II C Gc II  
3 G D

IEC	UL	CSA	EN 60079-7
500	300 (C)	300 (C)	
6.3	15	15	6.3
4	AWG 30...12	AWG 30...12	4 mm <sup>2</sup>

6 kV / 3

V-0

© CE CB eUL VDE DEMK014ATEX1389U

Rated connection	
0.5...4 / 1.5...4	
0.5...4	
0.4...0.4 / (M 3)	
0.6 x 3.5 mm	

Note

### Ordering data

Version	500 V AC/DC, without LED 10-36 V AC/DC, with LED 30-70 V AC/DC, with LED 60-150 V AC/DC, with LED 140-250 V AC/DC, with LED
Note	

Type	Qty.	Order No.
WSI 4	50	2562590000
WSI 4/LD 10-36V AC/DC	50	2564350000
WSI 4/LD 30-70V AC/DC	50	2564360000
WSI 4/LD 60-150V AC/DC	50	2564370000
WSI 4/LD 140-250V AC/DC	50	2564380000

### Accessories

End bracket	dark beige
Screwdriver	With "swifty set" cutting device Standard
G-fuse cartridge, 5 x 20 mm (IEC 60127-2)	0.25 A fast 0.50 A fast 1.00 A fast 2.00 A fast
Marking tags	

Type	Qty.	Order No.
WEW 35/2	50	1061200000
SWIFTY SET	1	9006060000
SDS 0.6X3.5X100	1	2749340000
G 20/0.25A/F	0.25 A 10	0430500000
G 20/0.50A/F	0.5 A 10	0430600000
G 20/1.00A/F	1 A 10	0430700000
G 20/2.00A/F	2 A 10	0430900000
DEK 5/5 MC NE WS	1000	1609801044
WS 12/6 MC NE WS	600	1609900000

For detailed information on other accessories and application in the online catalogue



## Screw connection with clamping yoke technology (W-Series)

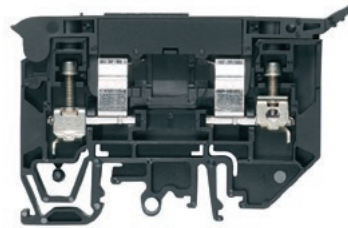
### Fuse terminal blocks

WSI 4/2

4 mm<sup>2</sup>

WSI 4/2

Overload and short-circuit protection



Width/Height/Depth	mm
max. current / max. cond. cross-section	A/mm <sup>2</sup>
Max. clamping range	mm <sup>2</sup>

9.1 x 81.6 x 53.5  
**6.3 / 6**  
**0.5...6**



#### Technical data

Rated data	
Rated voltage to adjoining terminal	V
Rated current	A
for wire cross-section	mm <sup>2</sup>
Rated impulse withstand voltage / Pollution severity	
UL 94 flammability rating	
Approvals	
Clamped conductors (H05V/H07V)	
Solid / Stranded	mm <sup>2</sup>
Flexible / Flexible with ferrule	mm <sup>2</sup>
Tightening torque / Clamping screw	Nm
Blade size	

IEC 60947-7-3

IEC	UL	CSA	EN 60079-7
500	300 (C)	300 (C)	
6.3	15	15	
4	AWG 30...10	AWG 30...10	
6 kV / 3			
V-0			

CE

Rated connection	
Solid / Stranded	0.5...6 / 1.5...6
Flexible / Flexible with ferrule	0.5...6
Tightening torque / Clamping screw	0.5...0.8 / (M 3)
Blade size	0.6 x 3.5 mm

**Note**

#### Ordering data

Version	
500 V AC/DC, without LED	
10-36 V AC/DC, with LED	
30-70 V AC/DC, with LED	
60-150 V AC/DC, with LED	
140-250 V AC/DC, with LED	

**Note**

Type	Qty.	Order No.
WSI 4/2	25	1880430000
WSI 4/2/LD 10-36V AC/DC	25	1880410000
WSI 4/2/LD 30-70V AC/DC	25	1880440000
WSI 4/2/LD 60-150V AC/DC	25	1880420000
WSI 4/2/LD 140-250V AC/DC	25	1880390000

#### Accessories

<b>End plate / Partition plate</b>	dark beige
<b>End bracket</b>	dark beige
<b>Screwdriver</b>	With "swifty set" cutting device Standard
<b>Marking tags</b>	

Type	Qty.	Order No.
WAP WSI4/2	50	1880450000
WEW 35/2	50	1061200000
SWIFTY SET	1	9006060000
SDS 0.6X3.5X100	1	2749340000
DEK 5/5 MC NE WS	1000	1609801044
WS 12/6 MC NE WS	600	1609900000

For detailed information on other accessories and application in the online catalogue

Type	Order No.
WSI 4/2	1880430000

Arrangement	Applications			
	Only short-circuit protection		Overload and short-circuit protection	
	T <sub>A</sub> max.	Nominal values	T <sub>A</sub> max.	Nominal values
Individual	55 °C	4.0 W / 10 A	35 °C	2.5 W / 2.5 A
In combination	68 °C	2.5 W / 2.5 A	41 °C	1.6 W / 1.0 A

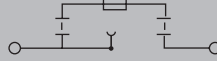
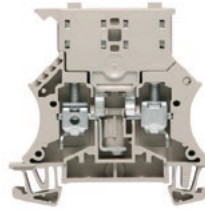
**WSI 6**

**6 mm<sup>2</sup>**

**WSI 6**

Metric fuses

Overload and short-circuit protection



Width/Height/Depth	mm
max. current / max. cond. cross-section	A/mm <sup>2</sup>
Max. clamping range	mm <sup>2</sup>

7.9 x 60 x 61  
**6.3 / 10**  
**0.5...10**

**Technical data**

<b>Rated data</b>	
Rated voltage to adjoining terminal	V
Rated current	A
for wire cross-section	mm <sup>2</sup>
Rated impulse withstand voltage / Pollution severity	
UL 94 flammability rating	
Approvals	
<b>Clamped conductors (H05V/H07V)</b>	
Solid / Stranded	mm <sup>2</sup>
Flexible / Flexible with ferrule	mm <sup>2</sup>
Tightening torque / Clamping screw	Nm
Blade size	

IEC 60947-7-3, IEC 60947-7-1

IEC	UL	CSA	EN 60079-7
500	600 (C)	600 (C)	
6.3	9.5	10	
6	AWG 22...8	AWG 20...8	
6 kV / 3			
V-0			

CE TÜV SÜD VDE

<b>Rated connection</b>	
0.5...10 / 1.5...10	
0.5...10 / 0.5...6	
0.8...1.6 / (M 3.5)	
0.8 x 4.0 mm	

**Note**

**Ordering data**

<b>Version</b>	
	500 V AC/DC, without LED
	10-36 V AC/DC, with LED
	30-70 V AC/DC, with LED
	60-150 V AC/DC, with LED
	140-250 V AC/DC, with LED
<b>Note</b>	

Type	Qty.	Order No.
WSI 6	50	1011000000

**Accessories**

<b>Screwable cross-connection</b>	
	2-pole
	10-pole
	Lock washer
	Mounting screw
<b>End plate / Partition plate</b>	
	dark beige
	dark beige
<b>Screwdriver</b>	
	Standard
<b>End bracket</b>	
	dark beige
<b>G-fuse cartridge, 5 x 20 mm (IEC 60127-2)</b>	
	0.25 A fast
	0.50 A fast
	1.00 A fast
	2.00 A fast
<b>Marking tags</b>	

Type	Qty.	Order No.
QL 2 SAK6N	41 A 50	0194300000
QL 10 SAK6N	41 A 20	0338300000
SS M3 D 128-A 3	50	0164400000
KISC M3X5	100	1052100000
WAP 2.5-10	50	1050000000
WAP 16+35 WTW 2.5-10	20	1050100000
SDS 0.8X4.0X100	1	2749360000
WEW 35/2	50	1061200000
G 20/0.25A/F	0.25 A 10	0430500000
G 20/0.50A/F	0.5 A 10	0430600000
G 20/1.00A/F	1 A 10	0430700000
G 20/2.00A/F	2 A 10	0430900000
DEK 5/8 MC NE WS	800	1856740000
WS 12/6.5 MC NE WS	540	1609920000
DEK 5/8 MM WS	500	2007130000
WS 8/8 MM WS	500	2007170000

Type	Order No.
WSI 6	1011000000

Arrangement	Applications			
	Only short-circuit protection		Overload and short-circuit protection	
	T <sub>A</sub> max.	Nominal values	T <sub>A</sub> max.	Nominal values
Individual	42 °C	4.0 W / 6.3 A	31 °C	1.6 W / 3.0 A
In combination	36 °C	2.5 W / 6.3 A	27 °C	1.6 W / 3.0 A

For detailed information on other accessories and application in the online catalogue





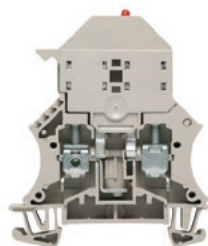
## Screw connection with clamping yoke technology (W-Series)

### Fuse terminal blocks

#### WSI 6 LED

6 mm<sup>2</sup>

Metric fuses / bipolar LED

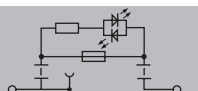


#### WSI 6 LED

Overload and short-circuit protection

Width/Height/Depth	mm
max. current / max. cond. cross-section	A/mm <sup>2</sup>
Max. clamping range	mm <sup>2</sup>

7.9 x 60 x 71.5  
**6.3 / 10**  
**0.5...10**



#### Technical data

Rated data	
Rated voltage to adjoining terminal	V
Rated current	A
for wire cross-section	mm <sup>2</sup>
Rated impulse withstand voltage / Pollution severity	
UL 94 flammability rating	
Approvals	
Clamped conductors (H05V/H07V)	
Solid / Stranded	mm <sup>2</sup>
Flexible / Flexible with ferrule	mm <sup>2</sup>
Tightening torque / Clamping screw	Nm
Blade size	

IEC 60947-7-3

IEC	UL	CSA	EN 60079-7
500			
6.3			
6	AWG 22...8	AWG 20...8	
6 kV / 3			
V-0			

CE, RoHS, REACH, VDE, TÜV

Rated connection	
0.5...10 / 1.5...10	
0.5...10 / 0.5...6	
0.8...1.6 / (M 3.5)	
0.8 x 4.0 mm	

**Note**

#### Ordering data

Version	
	500 V AC/DC, without LED
	10-36 V AC/DC, with LED
	30-70 V AC/DC, with LED
	60-150 V AC/DC, with LED
	140-250 V AC/DC, with LED

**Note**

Type	Qty.	Order No.
WSI 6/LD 10-36V DC/AC	10	1011300000
WSI 6/LD 30-70V DC/AC	10	1012200000
WSI 6/LD 60-150V DC/AC	10	1012300000
WSI 6/LD 250AC	10	1012400000

#### Accessories

Screwable cross-connection	
	2-pole
	10-pole
	Lock washer
	Mounting screw
End plate / Partition plate	
	dark beige
	dark beige
Screwdriver	
	Standard
End bracket	
	dark beige
G-fuse cartridge, 5 x 20 mm (IEC 60127-2)	
	0.25 A fast
	0.50 A fast
	1.00 A fast
	2.00 A fast
Marking tags	

Type	Qty.	Order No.
QL 2 SAK6N	41 A 50	0194300000
QL 10 SAK6N	41 A 20	0338300000
SS M3 D 128-A 3	50	0164400000
KISC M3X5	100	1052100000
WAP 2.5-10	50	1050000000
WAP 16+35 WTW 2.5-10	20	1050100000
SDS 0.8X4.0X100	1	2749360000
WEW 35/2	50	1061200000
G 20/0.25A/F	0.25 A 10	0430500000
G 20/0.50A/F	0.5 A 10	0430600000
G 20/1.00A/F	1 A 10	0430700000
G 20/2.00A/F	2 A 10	0430900000
DEK 5/8 MC NE WS	800	1856740000
WS 12/6.5 MC NE WS	540	1609920000
DEK 5/8 MM WS	500	2007130000
WS 8/8 MM WS	500	2007170000

For detailed information on other accessories and application in the online catalogue

Type	Order No.
WSI 6/LD 10-36V DC/AC	1011300000

Arrangement	Applications			
	Only short-circuit protection		Overload and short-circuit protection	
	T <sub>A</sub> max.	Nominal values	T <sub>A</sub> max.	Nominal values
Individual	42 °C	4.0 W / 6.3 A	31 °C	1.6 W / 3.0 A
In combination	36 °C	225 W / 6.3 A	27 °C	1.6 W / 3.0 A