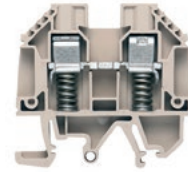
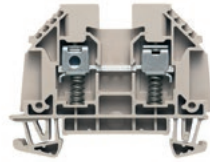


WDU 4 SL

4 mm²

WDU 4 SL/EN

4 mm²



Width/Height/Depth	mm
max. current / max. cond. cross-section	A/mm ²
Max. clamping range	mm ²

6.1 x 60 x 46.5
41 / 6
0.22...6

6.1 x 60 x 51.5
41 / 6
0.22...6

Technical data

Rated data	
Rated voltage	V
Rated current	A
for wire cross-section	mm ²
Rated impulse withstand voltage / Pollution severity	
Gauge to IEC 60947-1 / UL 94 flammability rating	
Approvals	
Clamped conductors (H05V/H07V)	
Solid / Stranded	mm ²
Flexible / Flexible with ferrule	mm ²
Tightening torque / Clamping screw	Nm
Stripping length / Blade size	mm/-
2 conductors with same cross-section (H05V/H07V)	
Solid / Stranded	-
Flexible / Flexible with ferrule	mm ²
Note	

IEC 60947-1	Ex eb II C Gb	Ex	II 2 G D
IEC	UL	CSA	EN 60079-7
690	600	300	440
32	30	25	32
4	AWG 22...10	AWG 22...10	4 mm ²
6 kV / 3			
A4 / V-0			
Rated connection	Further connection		
0.5...6 / 1.5...6			
0.5...4			
0.5...1 / (M 3)			
15 / 0.6 x 3.5 mm			
0.5...1.5 / 0.5...1.5			

IEC 60947-1	Ex eb II C Gb	Ex	II 2 G D
IEC	UL	CSA	EN 60079-7
690	600	300	440
32	30	25	32
4	AWG 22...10	AWG 22...10	4 mm ²
6 kV / 3			
A4 / V-0			
Rated connection	Further connection		
0.5...6 / 1.5...6			
0.5...4			
0.5...1 / (M 3)			
15 / 0.6 x 3.5 mm			
0.5...1.5 / 0.5...1.5			

Ordering data

Version	
	dark beige
	dark beige
	Blue
Note	

Type	Qty.	Order No.
WDU 4 SL	50	9537440000
WDU 4 SL BL	50	9203060000

Type	Qty.	Order No.
WDU 4 SL/EN	50	9537450000

Accessories

Screwable cross-connection	
	2-pole
	10-pole
End plate / Partition plate	
	dark beige
	dark beige
	Blue
	Blue
End bracket	
	dark beige
Testing / Checking	
	Standard
Cover	
	Blank, yellow
	Blank, white
Hak. Cable lugs	
Marking tags	
Plug-in cross-connection	
	2-pole
	10-pole
For detailed information on other accessories and application in the online catalogue	

Type	Qty.	Order No.
WQV 4/2	41 A 50	1051960000
WQV 4/10	41 A 20	1052060000
WAP 2.5-10	50	1050000000
WAP 16*35 WTW 2.5-10	20	1050100000
WEW 35/2	50	1061200000
WTA 3 WDU4	6 A 25	1632350000
HBT 1.5 - 3,0 RT	100	1312440000
HBT 2,5 - 3,0 BL	100	1312450000
WS 12/6 MC NE WS	600	1609900000
ZQV 4N/2	32 A 60	1527930000
ZQV 4N/10	32 A 20	1528090000

Type	Qty.	Order No.
WQV 4/2	41 A 50	1051960000
WQV 4/10	41 A 20	1052060000
WAP 2.5-10	50	1050000000
WAP 16*35 WTW 2.5-10	20	1050100000
WEW 35/2	50	1061200000
WTA 3 WDU4	6 A 25	1632350000
HBT 1.5 - 3,0 RT	100	1312440000
HBT 2,5 - 3,0 BL	100	1312450000
WS 12/6 MC NE WS	600	1609900000
ZQV 4N/2	32 A 60	1527930000
ZQV 4N/10	32 A 20	1528090000



Screw connection with clamping yoke technology (W-Series)

Feed-through terminal blocks

Universal range

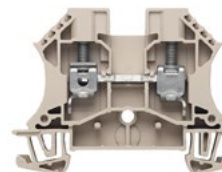
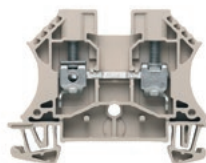
A

WDU 6

6 mm²

WDU 6 HV

6 mm²



Width/Height/Depth	mm
max. current / max. cond. cross-section	A/mm ²
Max. clamping range	mm ²

7.9 x 60 x 46.5	
57 / 10	
0.22...10	

7.9 x 60 x 46.5	
57 / 10	
0.22...10	

Technical data

Rated data	
Rated voltage	V
Rated current	A
for wire cross-section	mm ²
Rated impulse withstand voltage / Pollution severity	
Gauge to IEC 60947-1 / UL 94 flammability rating	
Approvals	
Clamped conductors (H05V/H07V)	
Solid / Stranded	mm ²
Flexible / Flexible with ferrule	mm ²
Tightening torque / Clamping screw	Nm
Stripping length / Blade size	mm/-
2 conductors with same cross-section (H05V/H07V)	
Solid / Stranded	mm ²
Flexible / Flexible with ferrule	mm ²
Note	

IEC 60947-7-1 Ex eb II C Gb II 2 G D

IEC	UL	CSA	EN 60079-7
800	600	600	690
41	50	50	41
6	AWG 22...8	AWG 22...8	6 mm ²
8 kV / 3			
A5 / V-0			
DEMKO14ATEX1338U			
Rated connection		Further connection	
0.5...10 / 1.5...10			
0.5...10 / 0.5...6			
0.8...1.6 / (M 3.5)			
12 / 0.8 x 4.0 mm			
0.5...2.5			
0.5...2.5 / 0.5...2.5			

IEC 60947-7-1

IEC	UL	CSA	EN 60079-7
1000			
41			
6			
8 kV / 3			
A5 / V-0			
C E			
Rated connection		Further connection	
0.5...10 / 1.5...10			
0.5...10 / 0.5...6			
0.8...1.6 / (M 3.5)			
12 / 0.8 x 4.0 mm			
0.5...2.5			
0.5...2.5 / 0.5...2.5			

Ordering data

Version	
	dark beige
	dark beige
	Blue
Note	

Type	Qty.	Order No.
WDU 6	100	1020200000
WDU 6 BL	100	1020280000

Type	Qty.	Order No.
WDU 6 HV	100	1412970000
WDU 6 IR	100	1393350000

Accessories

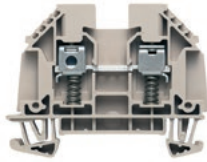
Screwable cross-connection	
	2-pole
	10-pole
End plate / Partition plate	
	dark beige
	dark beige
	Blue
	Blue
End bracket	
	dark beige
Testing / Checking	
	Standard
Cover	
	Blank, yellow
	Blank, white
Hak. Cable lugs	
Marking tags	
	DEK 5/8 MC NE WS
	WS 12/6.5 MC NE WS
	WS 8/8 MM WS
	DEK 5/8 MM WS
Plug-in cross-connection	
	2-pole
	10-pole
For detailed information on other accessories and application in the online catalogue	

Type	Qty.	Order No.
WQV 6/2	57 A 50	1052360000
WQV 6/10	57 A 20	1052260000
WAP 2.5-10	50	1050000000
WAP 16+35 WTW 2.5-10	20	1050100000
WAP 2.5-10 BL	50	1050080000
WAP 16+35 WTW 2.5-10 BL	20	1050180000
WEW 35/2	50	1061200000
WTA 3 WDU4	6 A 25	1632350000
WAD 8 MC NE GE	48	1112950000
WAD 8 MC NE WS	48	1112940000
DEK 5/8 MC NE WS	800	1856740000
WS 12/6.5 MC NE WS	540	1609920000
WS 8/8 MM WS	500	2007170000
DEK 5/8 MM WS	500	2007130000

Type	Qty.	Order No.
WQV 6/2	57 A 50	1052360000
WQV 6/10	57 A 20	1052260000
WAP 2.5-10	50	1050000000
WAP 16+35 WTW 2.5-10	20	1050100000
WAP 2.5-10 BL	50	1050080000
WAP 16+35 WTW 2.5-10 BL	20	1050180000
WEW 35/2	50	1061200000
WTA 3 WDU4	6 A 25	1632350000
WAD 8 MC NE GE	48	1112950000
WAD 8 MC NE WS	48	1112940000
DEK 5/8 MC NE WS	800	1856740000
WS 12/8 PLUS MC NE WS	420	1906000000
WS 8/8 MM WS	500	2007170000
DEK 5/8 MM WS	500	2007130000

WDU 6 SL

6 mm²



7.9 x 60 x 46.5
57 / 6
0.5...6



IEC 60947-7-1 Ex eb II C Gb II 2 G D

IEC	UL	CSA	EN 60079-7
630	150	300	275
41	50	45	40
6	AWG 20...8	AWG 20...8	6 mm ²

6 kV / 2
A5 / V-0

DEMKO14ATEX1338U

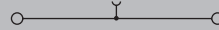
Rated connection	Further connection
0.5...6 6	
0.5...6	
0.8...1.6 / (M 3.5)	
16 / 0.8 x 4.0 mm	

WDU 6 SL/EN

6 mm²



7.9 x 60 x 51.1
57 / 6
0.5...6



IEC 60947-7-1 Ex eb II C Gb II 2 G D

IEC	UL	CSA	EN 60079-7
690	150	300	440
41	50	45	40
6	AWG 20...8	AWG 20...8	6 mm ²

6 kV / 3
A5 / V-0

DEMKO14ATEX1338U

Rated connection	Further connection
0.5...6 6	
0.5...6	
0.8...1.6 / (M 3.5)	
16 / 0.8 x 4.0 mm	

Type	Qty.	Order No.
WDU 6 SL	50	9537460000

Type	Qty.	Order No.
WDU 6 SL/EN	50	9537470000

Type	Qty.	Order No.
WQV 6/2	57 A 50	1052360000
WQV 6/10	57 A 20	1052260000
WAP 2.5-10	50	1050000000
WAP 16*35 WTW 2.5-10	20	1050100000
WEW 35/2	50	1061200000
WTA 5/1	6 A 25	1051260000
WAD 8 MC NE GE	48	1112950000
WAD 8 MC NE WS	48	1112940000
HBT 1,5 - 4,6 RT	100	1233340000
HBT 2,5 - 4,6 BL	100	1233330000
HBT 6,0 - 4,6 GE	100	1216230000
DEK 5/8 MC NE WS	800	1856740000
WS 12/6.5 MC NE WS	540	1609920000
WS 8/8 MM WS	500	2007170000
DEK 5/8 MM WS	500	2007130000

Type	Qty.	Order No.
WQV 6/2	57 A 50	1052360000
WQV 6/10	57 A 20	1052260000
WAP 2.5-10	50	1050000000
WAP 16*35 WTW 2.5-10	20	1050100000
WEW 35/2	50	1061200000
WTA 5/1	6 A 25	1051260000
WAD 8 MC NE GE	48	1112950000
WAD 8 MC NE WS	48	1112940000
HBT 1,5 - 4,6 RT	100	1233340000
HBT 2,5 - 4,6 BL	100	1233330000
HBT 6,0 - 4,6 GE	100	1216230000
DEK 5/8 MC NE WS	800	1856740000
WS 12/6.5 MC NE WS	540	1609920000
WS 8/8 MM WS	500	2007170000
DEK 5/8 MM WS	500	2007130000



Screw connection with clamping yoke technology (W-Series)
Feed-through terminal blocks

Universal range

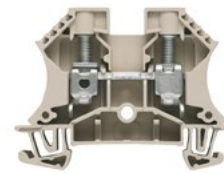
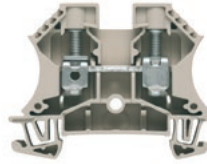
A

WDU 10

10 mm²

WDU 10 IR

10 mm²



Width/Height/Depth	mm
max. current / max. cond. cross-section	A/mm ²
Max. clamping range	mm ²

9.9 x 60 x 46.5
76 / 16
1.31...16

9.9 x 60 x 46.5
76 / 16
1.31...16

Technical data

Rated data	
Rated voltage	V
Rated current	A
for wire cross-section	mm ²
Rated impulse withstand voltage / Pollution severity	
Gauge to IEC 60947-1 / UL 94 flammability rating	
Approvals	
Clamped conductors (H05V/H07V)	
Solid / Stranded	mm ²
Flexible / Flexible with ferrule	mm ²
Tightening torque / Clamping screw	Nm
Stripping length / Blade size	mm/-
2 conductors with same cross-section (H05V/H07V)	
Solid / Stranded	mm ²
Flexible / Flexible with ferrule	mm ²
Note	

IEC 60947-1				Ex eb II C Gb II 2 G D			
IEC	UL	CSA	EN 60079-7				
1000	600	600	690				
57	65	65	57				
10	AWG 18...6	AWG 18...6	10 mm ²				
8 kV / 3							
B6 / V-0							
DEMKO14ATEX1338U							
Rated connection				Further connection			
1.5...16 / 1.5...16							
1.5...16 / 1.5...16							
1.2...1.9 / (M 4)							
12 / 1.0 x 5.5 mm							
0.5...6 / 0.5...6							
0.5...6 / 0.5...6							

IEC 60947-1				Ex eb II C Gb II 2 G D			
IEC	UL	CSA	EN 60079-7				
1000	600	600	690				
57	65	65	57				
10	AWG 18...6	AWG 18...6	10 mm ²				
8 kV / 3							
B6 / V-0							
DEMKO14ATEX1338U							
Rated connection				Further connection			
1.5...16 / 1.5...16							
1.5...16 / 1.5...16							
1.5...1.8 / (M 4)							
12 / TX 15							

Ordering data

Version	
	dark beige
	Blue
	dark beige (combi clip-on foot TS 32/25)
	black (combi clip-on foot TS 32/25)
Note	

Type	Qty.	Order No.
WDU 10	50	1020300000
WDU 10 BL	50	1020380000

Type	Qty.	Order No.
WDU 10 IR	50	1393380000

Accessories

Screwable cross-connection	
	2-pole
	10-pole
End plate / Partition plate	
	dark beige
	Blue
	dark beige
	Blue
End bracket	
	dark beige
Testing / Checking	
	Standard
Cover	
	Blank, yellow
	Blank, white
Hak. Cable lugs	
Marking tags	
For detailed information on other accessories and application in the online catalogue	

Type	Qty.	Order No.
WQV 10/2	76 A 50	1052560000
WQV 10/10	63 A 20	1052460000
WAP 2.5-10	50	1050000000
WAP 2.5-10 BL	50	1050080000
WAP 16+35 WTW 2.5-10	20	1050100000
WAP 16+35 WTW 2.5-10 BL	20	1050180000
WEW 35/2	50	1061200000
WTA 3 WDU4	6 A 25	1632350000
WAD 8 MC NE GE	48	1112950000
WAD 8 MC NE WS	48	1112940000
DEK 5/5 MC NE WS	1000	1609801044
WS 12/6.5 MC NE WS	540	1609920000

Type	Qty.	Order No.
WQV 10/2	76 A 50	1052560000
WQV 10/10	63 A 20	1052460000
WAP 2.5-10	50	1050000000
WAP 2.5-10 BL	50	1050080000
WAP 16+35 WTW 2.5-10	20	1050100000
WAP 16+35 WTW 2.5-10 BL	20	1050180000
WEW 35/2	50	1061200000
WTA 5/1	6 A 25	1051260000
WAD 8 MC NE GE	48	1112950000
WAD 8 MC NE WS	48	1112940000
DEK 5/5 MC NE WS	1000	1609801044
WS 12/6.5 MC NE WS	540	1609920000

WDU 10/ZR

10 mm²

Additional connection on right 4 mm²



9.9 x 70 x 49
76 / 16
1.31...16

IEC 60947-7-1

IEC	UL	CSA	EN 60079-7
800	600	600	
57	65	65	
10	AWG 16...6	AWG 16...6	
8 kV / 3			
B6, A4 / V-0			

CE KEMA VDE

Rated connection	Further connection
1.5...16 / 1.5...16	0.5...6 / 1.5...4
1.5...16 / 1.5...16	0.5...4 / 0.5...4
1.2...1.9 / (M 4)	
12 / 0.6 x 3.5 mm	10 / 0.6 x 3.5 mm

0.5...6

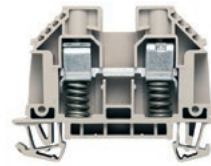
1...6 / 1...6

Type	Qty.	Order No.
WDU 10/ZR	50	1042400000
WDU 10/ZR BL	50	1042480000

Type	Qty.	Order No.
WQV 10/2	76 A 50	1052560000
WQV 10/10	63 A 20	1052460000
WEW 35/2	50	1061200000
DEK 5/5 MC NE WS	1000	1609801044
WS 12/6.5 MC NE WS	540	1609920000

WDU 10 SL

10 mm²



9.9 x 60 x 46.25
76 / 10
1.31...10

Ex eb II
C Gb Ex II 2 G D

IEC 60947-7-1

IEC	UL	CSA	EN 60079-7
630	150	300	352
57	50	65	55
10	AWG 16...8	AWG 16...6	10 mm ²
6 kV / 2			
A5 / V-0			

CE KEMA VDE

Rated connection	Further connection
1.5...10 / 1.5...10	
1...6	
1.2...2.4 / (M 4)	
17 / 1.0 x 5.5 mm	

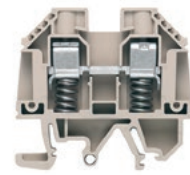
2.5...4 / 1...4

Type	Qty.	Order No.
WDU 10 SL	50	9537480000

Type	Qty.	Order No.
WQV 10/2	76 A 50	1052560000
WQV 10/10	63 A 20	1052460000
WAP 2.5-10	50	1050000000
WAP 2.5-10 BL	50	1050080000
WAP 16*35 WTW 2.5-10	20	1050100000
WEW 35/2	50	1061200000
WTA 5/1	6 A 25	1051260000
WAD 8 MC NE GE	48	1112950000
WAD 8 MC NE WS	48	1112940000
HBT 1,5 - 4,6 RT	100	1233340000
HBT 2,5 - 4,6 BL	100	1233330000
HBT 6,0 - 4,6 GE	100	1216230000
DEK 5/5 MC NE WS	1000	1609801044
WS 12/6.5 MC NE WS	540	1609920000

WDU 10 SL/EN

10 mm²



9.9 x 56.6 x 51.1
76 / 16
1.31...16

Ex eb II
C Gb Ex II 2 G D

IEC 60947-7-1

IEC	UL	CSA	EN 60079-7
690	600	300	550
57	50	65	55
10	AWG 16...8	AWG 16...6	10 mm ²
6 kV / 3			
A6 / V-0			

CE KEMA VDE

Rated connection	Further connection
1.5...16 / 1.5...16	
1...6	
1.2...2.4 / (M 4)	
17 / 1.0 x 5.5 mm	

2.5...4 / 1...4

Type	Qty.	Order No.
WDU 10 SL/EN	50	9537490000
WDU 10 SL/EN SW	50	9537410000

Type	Qty.	Order No.
WQV 10/2	76 A 50	1052560000
WQV 10/10	63 A 20	1052460000
WAP 2.5-10	50	1050000000
WAP 2.5-10 BL	50	1050080000
WAP 16*35 WTW 2.5-10	20	1050100000
WEW 35/2	50	1061200000
WTA 5/1	6 A 25	1051260000
WAD 8 MC NE GE	48	1112950000
WAD 8 MC NE WS	48	1112940000
HBT 1,5 - 4,6 RT	100	1233340000
HBT 2,5 - 4,6 BL	100	1233330000
HBT 6,0 - 4,6 GE	100	1216230000
DEK 5/5 MC NE WS	1000	1609801044
WS 12/6.5 MC NE WS	540	1609920000

Screw connection with clamping yoke technology (W-Series)

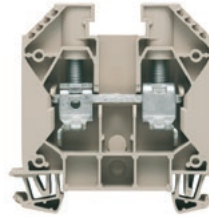
Feed-through terminal blocks

Identically contoured design of 2.5 to 10 mm² with identical end plates and partitions. An unmatched combination of many advantages!
The compact terminals are impressive for their small size and rated cross-section capacity.

WDU 16

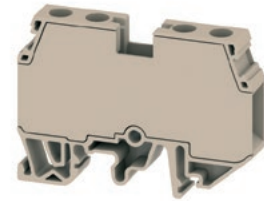
16 mm²

With peg for higher connection stability



WDUB 16

16 mm²



Width/Height/Depth	mm
max. current / max. cond. cross-section	A/mm ²
Max. clamping range	mm ²

11.9 x 60 x 62.5
101 / 25
0.82...25

9.9 x 65 x 47
76 / 16
0.5...16

Technical data

Rated data	
Rated voltage	V
Rated current	A
for wire cross-section	mm ²
Rated impulse withstand voltage / Pollution severity	
Gauge to IEC 60947-1 / UL 94 flammability rating	
Approvals	
Clamped conductors (H05V/H07V)	
Solid / Stranded	mm ²
Flexible / Flexible with ferrule	mm ²
Tightening torque / Clamping screw	Nm
Stripping length / Blade size	mm/-
2 conductors with same cross-section (H05V/H07V)	
Solid / Stranded	mm ²
Flexible / Flexible with ferrule	mm ²
Note	

IEC 60947-7-1

Ex eb II
C Gb II 2 G D

IEC	UL	CSA	EN 60079-7
1000	600	600	690
76	85	85	76
16	AWG 18...4	AWG 18...6	16 mm ²

8 kV / 3
B7 / V-0

DEMKD14ATEX1338U

Rated connection	Further connection
1.5...16 / 1.5...25	
1.5...25 / 1.5...16	
3...4 / (M 5)	
16 / 1.0 x 5.5 mm	
Rated connection	
Further connection	
1.5...6 / 1.5...6	
1.5...6 / 1.5...6	

IEC 60947-7-1

IEC	UL	CSA	EN 60079-7
1000	600		
76	65		
16			

8 kV / 3
B6 / V-0

Rated connection	Further connection
0.5...16 / 0.5...16	
0.5...10 / 0.5...10	
1.2...1.9 / (M 4)	
20 / 0.8 x 4.0 mm	
Rated connection	
Further connection	

Ordering data

Version	
	dark beige
	without peg / dark beige
	with peg / blue
	with peg / dark beige
Note	

Type	Qty.	Order No.
WDU 16	50	1020400000
WDU 16 BL	50	1020480000
WDU 16/ZA	50	1028900000

Type	Qty.	Order No.
WDUB 16	20	2868370000

Accessories

Screwable cross-connection	
	2-pole
	10-pole
End plate / Partition plate	
	dark beige
	Blue
End bracket	
	dark beige, screwable
	dark beige
Cover	
	black/yellow
	white
	Blank, yellow
	Blank, white
Marking tags	

Type	Qty.	Order No.
WQV 16/2	101 A 50	1053260000
WQV 16/10	101 A 10	1053360000
WAP 16+35 WTW 2.5-10		
	20	1050100000
WAP 16+35 WTW 2.5-10 BL		
	20	1050180000
WEW 35/1		
	50	1059000000
WAD 12 MC B GE/SW		
	32	2445090000
WAD 12 MC NE WS		
	32	2445070000
DEK 5/5 MC NE WS		
	1000	1609801044
WS 12/6.5 MC NE WS		
	540	1609920000

Type	Qty.	Order No.
WQV 10/2	76 A 50	1052560000
WQV 10/10	63 A 20	1052460000
WEW 35/2		
	50	1061200000
WAD 8 MC B GE/SW		
	48	1120470000
WAD 8 MC NE WS		
	48	1112940000
DEK 5/5 MC NE WS		
	1000	1609801044
WS 12/5 MC NE WS		
	720	1609860000

For detailed information on other accessories and application in the online catalogue

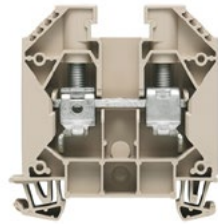
WDU 16 IR

16 mm²

WDU 16N

16 mm²

Suitable for power distribution
Compact design



Width/Height/Depth	mm
max. current / max. cond. cross-section	A/mm ²
Max. clamping range	mm ²

11.9 x 60 x 62.5
101 / 25
0.82...25

12 x 60 x 46.5
101 / 25
1.5...25

Technical data

Rated data	
Rated voltage	V
Rated current	A
for wire cross-section	mm ²
Rated impulse withstand voltage / Pollution severity	
Gauge to IEC 60947-1 / UL 94 flammability rating	
Approvals	
Clamped conductors (H05V/H07V)	
Solid / Stranded	mm ²
Flexible / Flexible with ferrule	mm ²
Tightening torque / Clamping screw	Nm
Stripping length / Blade size	mm/-
2 conductors with same cross-section (H05V/H07V)	
Solid / Stranded	mm ²
Flexible / Flexible with ferrule	mm ²
Note	

IEC 60947-7-1

Ex eb II
C Gb II 2 G D

IEC	UL	CSA	EN 60079-7
1000	600	600	690
76	85	85	76
16	AWG 18...4	AWG 18...6	16 mm ²
8 kV / 3			
B7 / V-0			

DEMKO14ATEX1338U

Rated connection	Further connection
1.5...16 / 1.5...25	
1.5...25 / 1.5...16	
3...4 / (M 5)	
16 / TX 15	
Rated connection	
Further connection	
1.5...6 / 1.5...6	
1.5...6 / 1.5...6	

IEC 60947-7-1

IEC	UL	CSA	EN 60079-7
690	600	300	
76	70	70	
16	AWG 14...6	AWG 14...6	
8 kV / 3			
B7 / V-0			

Rated connection	Further connection
1.5...16 / 1.5...25	
1.5...16 / 1.5...16	
1.2...2.4 / (M 4)	
12 / 1.0 x 5.5 mm	
Rated connection	
Further connection	
1.5...4 / 1.5...4	

Ordering data

Version	
	dark beige
	Blue
Note	

Type	Qty.	Order No.
WDU 16 IR	50	1393390000

Type	Qty.	Order No.
WDU 16N	50	1036100000
WDU 16N BL	50	1036180000

Accessories

Screwable cross-connection	
	2-pole
	10-pole
	4-pole
End plate / Partition plate	
	dark beige
	Blue
End bracket	
	dark beige, screwable
	dark beige
Cover	
	black/yellow
	white
Marking tags	
Testing / Checking	
	Standard

Type	Qty.	Order No.
WQV 16/2	101 A 50	1053260000
WQV 16/10	101 A 10	1053360000
End plate / Partition plate		
WAP 16+35 WTW 2.5-10	20	1050100000
WAP 16+35 WTW 2.5-10 BL	20	1050180000
End bracket		
WEW 35/1	50	1059000000
Cover		
WAD 12 MC B GE/SW	32	2445090000
WAD 12 MC NE WS	32	2445070000
Marking tags		
DEK 5/5 MC NE WS	1000	1609801044
WS 12/5 MC NE WS	720	1609860000
Testing / Checking		

Type	Qty.	Order No.
WQV 16N/2	76 A 50	1636560000
WQV 16N/4	76 A 50	1636580000
WTW EN	20	1058800000
End bracket		
WEW 35/2	50	1061200000
Cover		
WAD 12 MC B GE/SW	32	2445090000
WAD 12 MC NE WS	32	2445070000
Marking tags		
DEK 5/5 MC NE WS	1000	1609801044
WS 10/12 MC NE WS	300	1905970000
Testing / Checking		
WTA 2 WDU2.5-10	6 A 25	1632320000

For detailed information on other accessories and application in the online catalogue



Screw connection with clamping yoke technology (W-Series)
Feed-through terminal blocks

Identically contoured design of 2.5 to 10 mm² with identical end plates and partitions. An unmatched combination of many advantages!
 The compact terminals are impressive for their small size and rated cross-section capacity.

Width/Height/Depth	mm
max. current / max. cond. cross-section	A/mm ²
Max. clamping range	mm ²

Technical data

Rated data	
Rated voltage	V
Rated current	A
for wire cross-section	mm ²
Rated impulse withstand voltage / Pollution severity	
Gauge to IEC 60947-1 / UL 94 flammability rating	
Approvals	
Clamped conductors (H05V/H07V)	
Solid / Stranded	mm ²
Flexible / Flexible with ferrule	mm ²
Tightening torque / Clamping screw	Nm
Stripping length / Blade size	mm/-
2 conductors with same cross-section (H05V/H07V)	
Solid / Stranded	-
Flexible / Flexible with ferrule	mm ²
Note	

Ordering data

Version	
	without peg / dark beige
	with peg / blue
	with peg / dark beige
Note	

Accessories

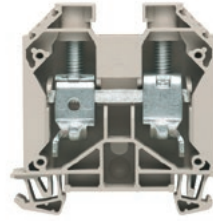
Screwable cross-connection	
	2-pole
	10-pole
	4-pole
End plate / Partition plate	
	dark beige
	Blue
End bracket	
	dark beige, screwable
	dark beige
Cover	
	black/yellow
	white
	With lightning flash symbol
Marking tags	

For detailed information on other accessories and application in the online catalogue

WDU 35

35 mm²

Clamping screw / spigot for good connection stability



16 x 60 x 62.5
150 / 50
2.5...50

IEC 60947-7-1				Ex eb II	C Gb	Ex	II 2 G D
IEC	UL	CSA	EN 60079-7				
1000	1000	600	690				
125	150	150	115				
35	AWG 12...0	AWG 12...NaN	35 mm ²				
				8 kV / 3			
				B8 / V-0			
DEMKO14ATEX1338U							
Rated connection		Further connection					
2.5...16 / 2.5...50							
2.5...35 / 2.5...35							
4...5 / (M 6)							
18 / 6.5 x 1.2 mm							
/ 16...16							
2.5...16 / 2.5...16							
Note							

Type	Qty.	Order No.
WDU 35	40	1020500000
WDU 35 BL	40	1020580000
WDU 35/ZA	40	1028800000
Note		

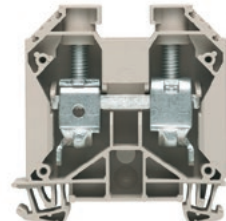
Type	Qty.	Order No.
WQV 35/2	138 A 50	1053060000
WQV 35/10	112 A 10	1053160000
End plate / Partition plate		
WAP 16+35 WTW 2.5-10	20	1050100000
WAP 16+35 WTW 2.5-10 BL	20	1050180000
End bracket		
WEW 35/1	50	1059000000
Cover		
WAD 12 MC B GE/SW	32	2445090000
WAD 12 MC NE WS	32	2445070000
Marking tags		
DEK 5/5 MC NE WS	1000	1609801044
WS 12/6.5 MC NE WS	540	1609920000
Note		

For detailed information on other accessories and application in the online catalogue

WDU 35 IR

35 mm²

Clamping screw / spigot for good connection stability



16 x 60 x 62.5
150 / 50
2.5...50

IEC 60947-7-1				Ex eb II	C Gb	Ex	II 2 G D
IEC	UL	CSA	EN 60079-7				
1000	1000		690				
125	150		115				
35	AWG 12...0		35 mm ²				
				8 kV / 3			
				B8 / V-0			
DEMKO14ATEX1338U							
Rated connection		Further connection					
2.5...16 / 2.5...50							
2.5...35 / 2.5...35							
4...5 / (M 6)							
18 / TX 20							
/ 16...16							
2.5...16 / 2.5...16							
Note							

Type	Qty.	Order No.
WDU 35 IR	40	1393400000
Note		

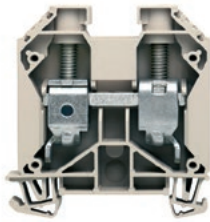
Type	Qty.	Order No.
WQV 35/2	138 A 50	1053060000
WQV 35/10	112 A 10	1053160000
End plate / Partition plate		
WAP 16+35 WTW 2.5-10	20	1050100000
WAP 16+35 WTW 2.5-10 BL	20	1050180000
End bracket		
WEW 35/1	50	1059000000
Cover		
WAD 12 MC B GE/SW	32	2445090000
WAD 12 MC NE WS	32	2445070000
Marking tags		
DEK 5/5 MC NE WS	1000	1609801044
WS 12/5 MC NE WS	720	1609860000
Note		

For detailed information on other accessories and application in the online catalogue

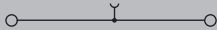
WDU 35 IK

35 mm²

Hexagonal socket / spigot for good connection stability



16 x 60 x 62.5
150 / 50
2.5...50



IEC 60947-7-1 Ex eb II C Gb II 2 G D

IEC	UL	CSA	EN 60079-7
1000	600	600	690
125	150	150	115
35	AWG 12...NaN	AWG 12...NaN	35 mm ²

8 kV / 3

B8 / V-0

DEMKO14ATEX1338U

Rated connection	Further connection
2.5...16 / 2.5...50	
2.5...35 / 2.5...35	
4...6 / (M 6)	
18 / S4 (DIN 6911)	
/ 16...16	
2.5...16 / 2.5...16	

Type	Qty.	Order No.
WDU 35/IK	25	1020600000
WDU 35/IK BL	25	1020680000
WDU 35/IK/ZA	25	1029000000

Type	Qty.	Order No.
WQV 35/2	138 A 50	1053060000
WQV 35/10	112 A 10	1053160000
WAP 16+35 WTW 2.5-10	20	1050100000
WAP 16+35 WTW 2.5-10 BL	20	1050180000
WEW 35/1	50	1059000000
WAD 12 MC B GE/SW	32	2445090000
WAD 12 MC NE WS	32	2445070000
DEK 5/5 MC NE WS	1000	1609801044
WS 12/6.5 MC NE WS	540	1609920000

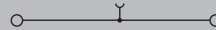
WDU 35N

35 mm²

Suitable for power distribution
Compact design



16 x 66 x 50.5
150 / 50
2.5...50



IEC 60947-7-1 Ex eb II C Gb II 2 G D

IEC	UL	CSA	EN 60079-7
500	1000		352
125	150		110
35	AWG 12...0	AWG 12...2	35 mm ²

6 kV / 3

B8 / V-0

DEMKO14ATEX1338U

Rated connection	Further connection
2.5...16 / 2.5...50	
2.5...35 / 2.5...35	
4...5 / (M 6)	
18 / 6.5 x 1.2 mm	
2.5...6 / 2.5...6	

Type	Qty.	Order No.
WDU 35N	20	1040400000
WDU 35N BL	20	1040480000

Type	Qty.	Order No.
WQV 35N/2	125 A 20	1079200000
WQV 35N/4	125 A 20	1079400000
WTW EN	20	1058800000
WEW 35/2	50	1061200000
WAD 16N GE BED	50	1083600000
DEK 5/5 MC NE WS	1000	1609801044
WS 12/6.5 MC NE WS	540	1609920000

