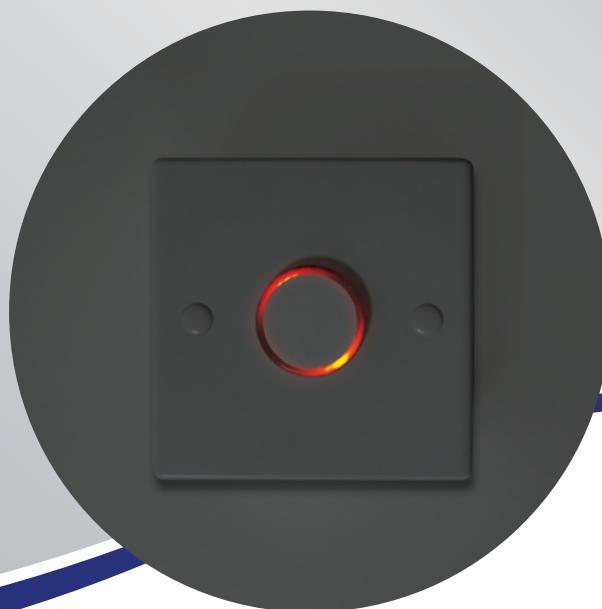




Double Insulated

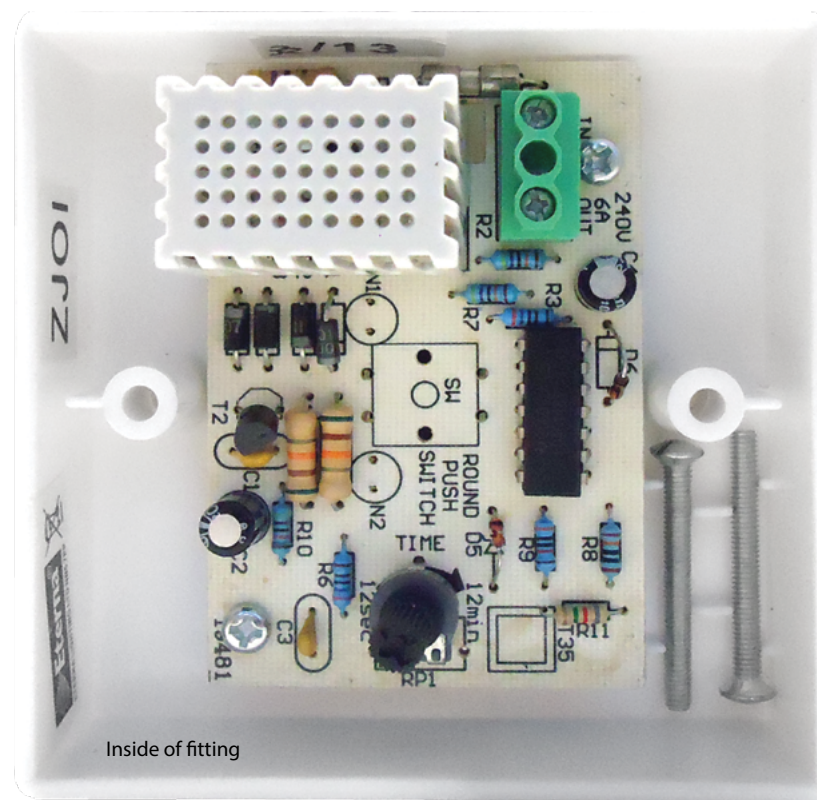


Red neon glow

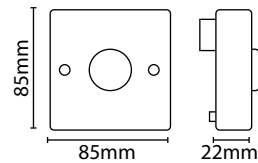
Eterna[®]
Everyday Lighting For Professionals

ELECTRONIC TIME DELAY PUSH SWITCH

- ABS construction • Max load rating: 6 Amp incandescent 1440W
- Time on adjustable between 12 seconds and 12 minutes
- Red neon switch perimeter glow light: easy location of switching point
- No neutral connection required: can replace existing switch with no additional wiring
- Not compatible with LED - See Eterna product: **PUSHLED**



Inside of fitting



Code	IP Rating	MOM / OPQ
TLS1440	IP20	5 / 40