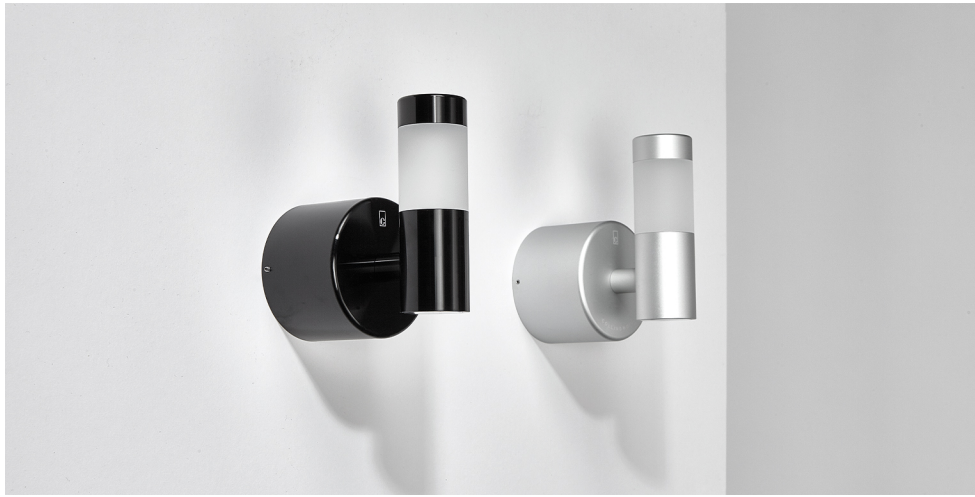




WALL LIGHTS SPECIFICATION SHEET



**COLLINGWOOD
LIGHTING**

01604 495 151
collingwoodlighting.com

 /collingwoodlighting

 /collingwoodlighting

 collingwoodled

WL060

Straight to mains LED halo / flood wall light

FEATURES

IP rating	IP65
Colour flexibility	Fixed colour
Tilttable	No
Dimmable	No
Input	220-240V 50/60Hz
LED Lifetime	70,000h L70 B10
CRI	>80Ra
SDCM	3SDCM

INSTALLATION INFORMATION

Bathroom zone	2
Inrush Current	9A 0.8ms
Construction Material	Anodised aluminium
Weight	0.6kg
Maximum ambient temperature	40°C
Electric Class (1, 2, 3)	1

GUARANTEE / WARRANTY

7 year extended warranty

FEATURES & BENEFITS

Bi-directional wall light offering decorative halo effect and functional downward flood light

Straight to mains

Complete with wall fixings and waterproof crimp connectors

PHOTOMETRICS @ 25°C

Product code	Finish	Wattage	Colour	Beam angle	lm	lm/W	lx @ 1m
WL060 NW	Silver	2.6W	4000K	110°	82	32	46
WL060 WW	Silver	2.6W	3000K	110°	58	22	26
WL060 27	Silver	2.6W	2700K	110°	56	22	25

WIRING INFORMATION

Cable / Flying Lead	0.3m
Type of Wiring Required	Parallel

LED DRIVER

Product code	Input	SELV	Dimming	Bathroom zone	Min	Max
N/A (integrated SELV driver)	220-240V	Yes	No	N/A	N/A	N/A

ACCESSORIES

N/A	No accessories required
-----	-------------------------

Light source energy efficiency:



Beam angle: 110°

