

Pushes

Barrel Type Bell Pushes

Low Voltage Circuits Only (Maximum 12V)



365

- Brass Barrel & Push
- 16mm Diameter Hole



366

- Chrome Barrel & Push
- 16mm Diameter Hole

Multi Gang Bell Pushes

Low Voltage Circuits Only (Maximum 12V)



2727A

- Plastic - Surface
- White
- Strips Of Ten
- Single Unit - 90x32x18mm



3737A

- Plastic - Surface
- White
- Single Unit - 90x32x18.5mm
- Illuminated

Plastic Bell Pushes

Low Voltage Circuits Only (Maximum 12V)



KK02001

- Plastic - Surface
- White
- 25x65x20mm
- White Push



KK02001L

- Plastic - Surface
- White
- 25x65x20mm
- Clear Push
- Lifetime Illuminated Led



PB01 NEW

- Plastic - Surface
- White Curve
- 25x65x20mm
- White Push
- Lifetime Illuminated Led



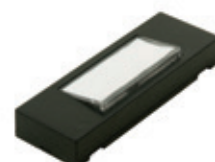
PB02 NEW

- Plastic - Surface
- Black Smoke
- 25x65x20mm
- Clear Push
- Lifetime Illuminated Led



PB03W NEW

- Plastic - Surface
- White
- 25x65x20mm
- White Push
- Lifetime Illuminated Led



PB03B NEW

- Plastic - Surface
- Black
- 25x65x20mm
- White Push
- Lifetime Illuminated Led