

ALUMINIUM TRUNKING SYSTEMS

Aluminium cable containment is an excellent choice of material for office areas that need a stylish but mechanically robust trunking and for industrial, workshop and laboratory installation, particularly where a high quality of screening performance is required.

ALUMINIUM TRUNKING SYSTEMS

The physical properties of aluminium are ideally suited for internal cable management distribution. Aluminium is light to handle with high mechanical strength and impact-resistance.

Extruded sections provide attractive profiles and products are finished with a high quality, powder-coat that provides a blemish-resistant surface.

Aluminium perimeter trunking systems provide elegant, stream-lined containment with the practical advantages of inherent LSOH (low smoke zero halogen). Aluminium is an excellent choice for office and educational areas requiring a stylish yet robust trunking system, particularly effective where a high quality of screening performance and security is required.

Marshall-Tufflex offer a wide range of multi-compartment aluminium trunking in different heights, designs, cable capacities and numbers of compartments.

Standard colour

Our aluminium trunking systems are all available in silver grey RAL 9006. Some systems are also available in white RAL 9016 as per the table below.

Colour	Colour code suffix	Bench trunking	Elegance 110	Sterling Curve profile 1	Sterling Curve profile 2	Twin Plus	XL301	XL302
Silver Grey (RAL 9006)	SG	✓	✓	✓	✓	✓	✓	✓
White (RAL 9016)	WH	✓		✓				

Environmental & sustainability



- Aluminium is naturally found combined in over 270 different minerals, the chief source of which is bauxite ore.
- Its light weight means less strain on supporting structures, easier handling and reduced transport costs.
- 100% recyclable material and can be recycled many times without loss of quality.
- Recycling facilities are well established.

EMI protection



- First class EMI screening performance especially at higher frequencies.

Fire performance



- Aluminium systems specified with polycarbonate fittings meet accepted requirements for LSOH.
- Withstands high temperatures with a melting point of 655°C (1211°F).
- Polycarbonate fittings are fire rated to UL94 V0.

Bench trunking

105 x 105mm

Desk and laboratory trunking.



Page 74

*Available in silver-grey RAL 9006 and white RAL 9016.

Twin Plus

210 x 57mm

Large capacity dado and skirting trunking with two deep compartments with in-built segregation of power and data.



Page 78

*Only available in silver-grey RAL 9006.

Elegance 110

110 x 55mm

Dado and skirting trunking with a single cover.



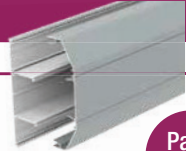
Page 75

*Only available in silver-grey RAL 9006.

XL301

220 x 65mm

Dado trunking with three deep compartments.



Page 79

*Only available in silver-grey RAL 9006.

Sterling Curve Profile 1

167 x 50mm

A stylish curved three compartment dado trunking system designed to stop clutter, avoid dust traps and to make cleaning easy.



Page 76

*Available in silver-grey RAL 9006 and white RAL 9016

XL302

220 x 65mm

Skirting trunking with three deep compartments.



Page 79

*Only available in silver-grey RAL 9006.

Sterling Curve Profile 2

167 x 50mm

A stylish curved three compartment skirting trunking system designed to stop clutter, avoid dust traps and to make cleaning easy.



Page 76

*Only available in silver-grey RAL 9006.

Components, Boxes & Plates

Accessory boxes, plates and components suitable for use with our aluminium trunking systems.



Page 81

BENCH TRUNKING ALUMINIUM

COMPLIANT UP TO
CAT 7A

Bench trunking aluminium is a robust angled trunking that can be mounted directly on to desks, work benches or fitted under shelving.

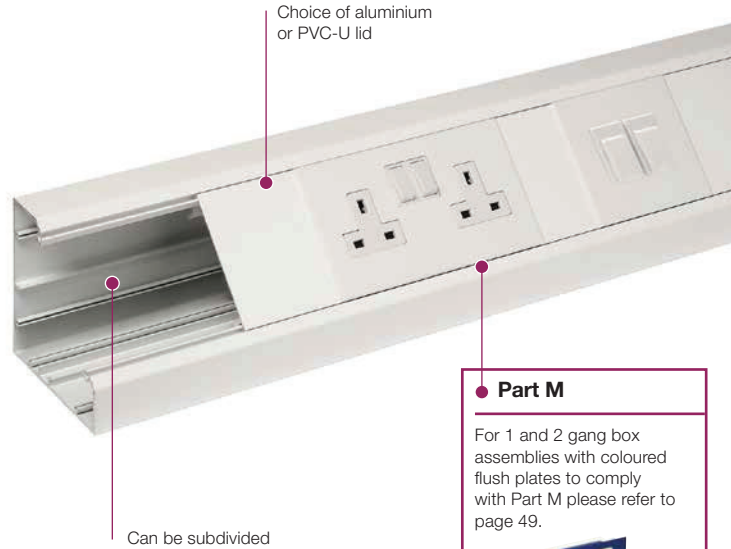
Product information

- 105 x 105mm
- Suitable for desk, bench or worktop applications
- Can be subdivided
- Aluminium systems specified with polycarbonate fittings meet accepted requirements for LSOH

Data information

- Compliant up to Cat 7a
- Adjustable data box 32-40mm

Note: Allowance must be made for earthing the trunking system to comply with the current version of the BS 7671 Wiring Regulations.



Choice of aluminium or PVC-U lid

Can be subdivided

Part M

For 1 and 2 gang box assemblies with coloured flush plates to comply with Part M please refer to page 49.



These products are manufactured from PVC-U and are not LSOH

Standard Colours	
WH	SG
WH: White	SG: Silver Grey

Colour code suffix: to indicate the finish you require, add the required colour code to the end of the product code.

ALUMINIUM TRUNKING SYSTEMS

Basic components



Base unit

code	size	pack
MBTAB105SG	105 x 105mm	1 x 3m



Cover

code	material	pack
MBTAL105SG	aluminium	1 x 3m
ETL1WH	PVC-U	8 x 3m

Aluminium base and PVC-U cover

Our PVC-U cover is compatible with our aluminium base. Order ETL1WH PVC-U cover



Dividing fillet (PVC-U)

code	pack
BDF105WH	4 x 3m

Fittings



End cap (steel)

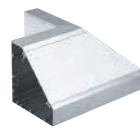
code	pack
BECA105SG	1

Supplied with fixing screws
Recommended for use with LBS3 (see page 81)



Internal angle (aluminium)

code	pack
BIAA105SG	1



External angle (aluminium)

code	pack
BEAA105SG	1

For components and boxes see page 81

ELEGANCE 110 ALUMINIUM

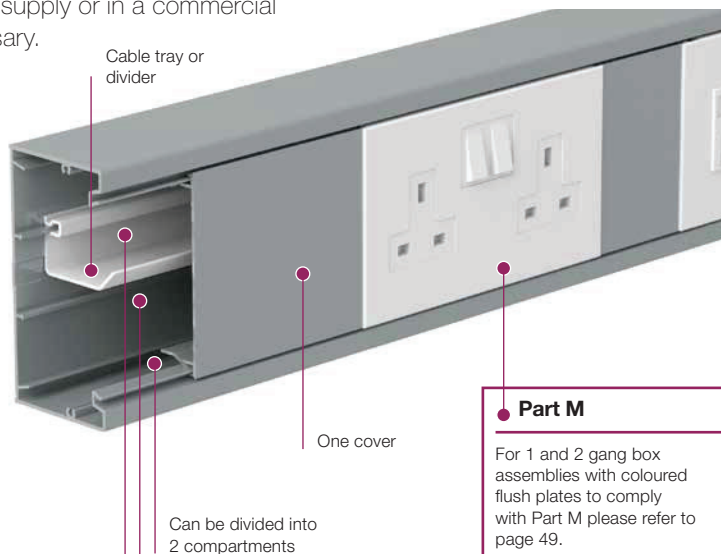


Elegance 110 aluminium is a small, rectangular, dado trunking system with a single cover. It is particularly useful for workshop or laboratory supply or in a commercial environment where extra mechanical strength is necessary.

Product information

- 110 x 55mm
- Compliant up to Cat 7a
- Can be subdivided into 2 compartments
- Suitable for dado and skirting applications
- Aluminium systems specified with polycarbonate fittings meet accepted requirements for LSOH

Note: Allowance must be made for earthing the trunking system to comply with the current version of the BS 7671 Wiring Regulations.



Standard Colour
SG
SG: Silver Grey

Part M

For 1 and 2 gang box assemblies with coloured flush plates to comply with Part M please refer to page 49.



These products are manufactured from PVC-U and are not LSOH

Basic components



Base unit	
code	pack
LTB2SG	1 x 3m

Recommended to use with LBS3 (see page 81)



Main compartment cover	
code	pack
LTL1SG	1 x 3m



Dividing tray (PVC-U)	
code	pack
EDF2	8 x 3m

Fittings



End caps	
code	pack
LECPSSG	1

Supplied with screws



End cap bonding strap		
code	description	pack
LBS5	end cap to base	1

For use with Elegance end cap LECPSSG



Internal bend	
code	pack
LIBPSSG	1



External bend	
code	pack
LXPSSG	1



Flat angle	
code	pack
LFASSG	1



Flat tee	
code	pack
LFTSSG	1

For components and boxes see page 81

STERLING CURVE ALUMINIUM PROFILE 1 AND 2

COMPLIANT UP TO
CAT 7A

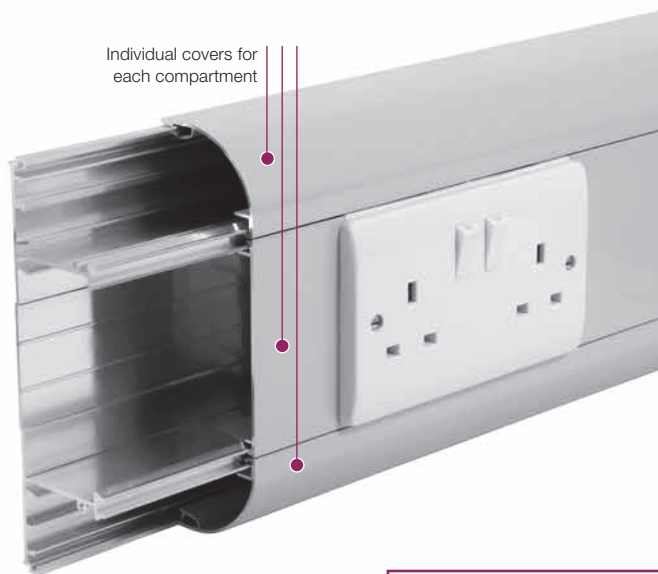
Sterling Curve Aluminium is a robust and stylish Cat 7a compliant perimeter dado or skirting system that is easy and cost effective to use. The adaptable system has a curved outer top compartment to stop clutter and aid cleaning.

Product information

- 167 x 50mm
- 3 segregated compartments
- Suitable for dado and skirting application
- Boxes available to comply with Part M (DDA)
- Single piece moulded polycarbonate couplers, end caps, internal and external bends
- Choice of adjustable or fixed bends for Profile 1
- Fabricated aluminium flat tees and flat angles

Data information

- Compliant up to Cat 7a
- Standard bend radius 25mm
- Adjustable data box 32-40mm



Part M

For box assemblies and spacers that meet the requirements of Part M (DDA) please refer to page 49.



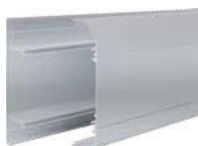
These products are manufactured from PVC-U and are not LSOH

Standard Colours	
WH	SG
WH: White	SG: Silver Grey

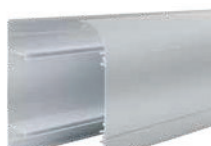
This range is also available in white for Profile 1 only.

Colour code suffix: to indicate the finish you require, add the required colour code to the end of the product code.

Trunking profiles



Curve Profile 1
size 167 x 50mm



Curve Profile 2
size 167 x 50mm

For components and boxes see page 81

Basic components



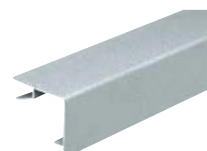
Base unit
code ETB300MMF pack 1 x 3m



Main compartment cover
code LTL1SG pack 1 x 3m



Curve cover
code CETC300SG pack 1 x 3m



Square cover
code ETSC300SG pack 1 x 3m

Curve Profile 1 fittings



Profile 1 Coupler

code	description	pack
CECP1MASG	polycarbonate	1



Profile 1 End cap

code	description	pack
CEEC1MASG	polycarbonate	1



Profile 1 Internal bend

code	description	pack
CEIBP1MASG	polycarbonate	1



Profile 1 External bend

code	description	pack
CEXBP1MASG	polycarbonate	1



Profile 1 Flat angle fabricated

code	description	pack
CEFA1ASG		1



Profile 1 Flat tee fabricated

code	description	pack
CEFT1ASG		1

Curve Profile 2 fittings



Profile 2 Coupler

code	description	pack
CECP2MASG	polycarbonate	1



Profile 2 End cap

code	description	pack
CEEC2MARHSG	(right) polycarbonate	1
CEEC2MALHSG	(left) polycarbonate	1



Profile 2 Internal bend

code	description	pack
CEIBP2MASG	polycarbonate	1



Profile 2 External bend

code	description	pack
CEXBP2MASG	polycarbonate	1



Profile 2 Flat angle up fabricated

code	description	pack
CEFA2ASG		1



Profile 2 Flat tee fabricated

code	description	pack
CEFT2ASG		1

Components



Main crossover bridge (PVC-U)

code	description	pack
EMCB1		5

TWIN PLUS ALUMINIUM



Twin Plus aluminium is an extra deep cable management solution incorporating two large segregated high capacity compartments. Twin Plus is specifically designed for carrying large quantities of Cat 7a data cabling.

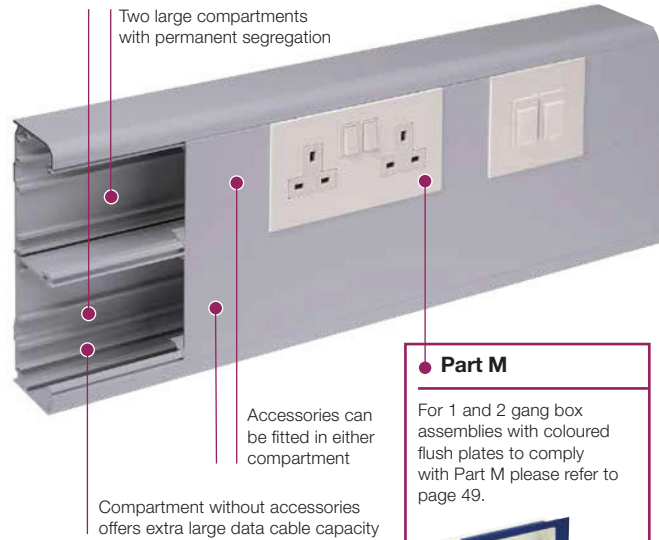
Product information

- 210 x 57mm
- 2 large permanent segregated compartments
- Suitable for dado and skirting applications
- Bends angles and tees with a large bend radius
- Includes a range of clip-on fittings with built-in overlaps
- All fittings are polycarbonate
- Aluminium systems specified with polycarbonate fittings meet accepted requirements for LSOH

Data information

- Compliant up to Cat 7a
- 50mm bend radius fittings
- Adjustable data box 32-47mm

Note: Allowance must be made for earthing the trunking system to comply with the current version of the BS 7671 Wiring Regulations.



Part M

For 1 and 2 gang box assemblies with coloured flush plates to comply with Part M please refer to page 49.

Standard Colours
SG
SG: Silver Grey

ALUMINIUM TRUNKING SYSTEMS

Basic components



Base unit

code	pack
EMTA60SG	1 x 3m



Main compartment cover (aluminium)

code	pack
LTL1SG	1 x 3m

Fittings (polycarbonate)



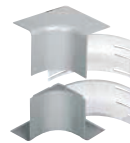
Coupler

code	pack
EC60SG	1



End cap

code	pack
EEC60SG	1



Internal bend assembly

code	pack
EIB60SG	1



External bend assembly - standard

code	pack
ESXB60SG	1

Capacity reduced by 50%



Flat angle assembly

code	pack
EFA60SG	1

Covers and cable inserts in Polycarbonate



Flat tee assembly

code	pack
EFTA60SG	1

Flat tees include covers, cable inserts in Polycarbonate with base in aluminium

End cap retaining screws

When installing end caps, additional retention can be achieved by using end cap retaining screws G1310 (pack 40).

For components and boxes see page 81

XL301 AND XL302 ALUMINIUM

COMPLIANT UP TO
...CAT 7A...

XL aluminium trunking 301 and 302 are deep, 3-compartment systems that provide extra capacity and screening performance levels for data cabling.

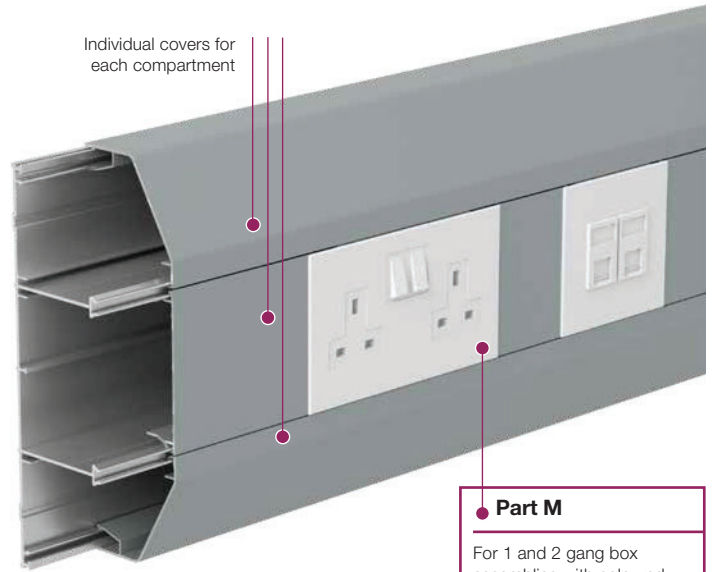
Product information

- 220 x 65mm
- 3 deep segregated compartments
- Compartments can be subdivided
- Suitable for dado and skirting applications
Includes a range of polycarbonate clip-on fittings with built-in overlaps
- Aluminium systems specified with polycarbonate fittings meet accepted requirements for LSOH

Data information

- Compliant up to Cat 7a
- External bends feature internal segregators
- Adjustable data box 32mm - 47mm
- Screened divider

Note: Allowance must be made for earthing the trunking system to comply with the current version of the BS 7671 Wiring Regulations.

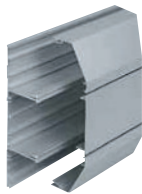


Part M

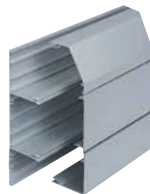
For 1 and 2 gang box assemblies with coloured flush plates to comply with Part M please refer to page 49.

Standard Colour
SG
SG: Silver Grey

Trunking profiles



XL301
 size 220 x 65mm



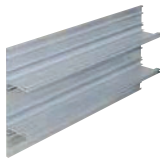
XL302
 size 220 x 65mm



Dividing fillet (PVC-U)
 code pack
 ELDF200 8 x 3m

For components and boxes see page 81

Basic components



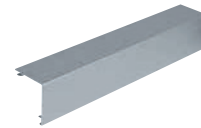
Base unit
 code pack
 ELTB300 2 x 3m



Main compartment cover
 code pack
 LTL1SG 1 x 3m



Angled cover
 code pack
 ELAC300SG 1 x 3m



Square cover
 code pack
 ELSC300SG 1 x 3m

ALUMINIUM TRUNKING SYSTEMS

XL301 fittings



XL301 Coupler

code	description	pack
EC301SG	polycarbonate	1



XL301 End cap

code	description	pack
EEC301SG	polycarbonate	1



XL301 Internal bend

code	description	pack
EIB301SG	polycarbonate	1



XL301 External bend

code	description	pack
EXB301SG	polycarbonate	1



XL301 Flat angle – up/down

code	description	pack
EFA301SG	aluminium	1



XL301 Flat tee – up/down

code	description	pack
EFT301SG	aluminium	1



XL302 Coupler

code	description	pack
EC302SG	polycarbonate	1



XL302 End cap

code	description	pack
EEC302LHSG	polycarbonate	1
EEC302RHSG	polycarbonate	1

LH = Left hand RH = Right hand



XL302 Internal bend

code	description	pack
EIB302SG	polycarbonate	1



XL302 External bend

code	description	pack
EXB302SG	polycarbonate	1



XL302 Flat angle – upward

code	description	pack
EFA302USG	aluminium	1



XL302 Flat angle – downward

code	description	pack
EFA302DSG	aluminium	1

XL Trunking 302 flat tees

Where profiles have one angled cover and one square cover, as with XL302, it is possible to create a tee by changing the top or bottom cover so that covers match the profile of the trunking. For example:

- Upward tee – select XL301 tee remove the angled bottom cover and replace with square cover.

XL302 fittings

Components



Earth bonding kit

code	description	pack
LBT3		1



Coupler pin

code	description	pack
LDP1	ø2.0 x 20mm	10

To aid alignment of base profiles



Bonding strap

code	description	pack
LBS1	base to base 32 amp	5



Bonding strap

code	description	pack
LBS2	cover to base	5



Bonding strap

code	description	pack
LBS5	end cap to base	1



End cap bonding strap

code	description	pack
LBS3		1

Boxes and plates (polycarbonate)



RCD/MCB housing

code	description	pack
EAHCA1MWH	polycarbonate	1

Not available in silver grey.
*Up to 4 modules can be accommodated.
Note: RCDs and MCBs are not supplied by Marshall-Tufflex



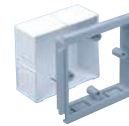
1 gang accessory box 30mm deep

code	description	pack
ESSB1SG		1
ESSBA1WH		1



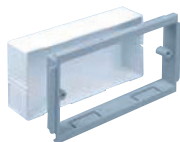
2 gang accessory box 30mm deep

code	description	pack
ESSB2SG		1
ESSBA2WH		1



1 gang adjustable depth box

code	depth	pack
EAB1SG	32-47mm	1



2 gang adjustable depth box

code	depth	pack
EAB2SG	32-47mm	1



1 gang accessory plate

code	description	pack
ESSP1SG		2



2 gang accessory plate

code	description	pack
ESSP2SG		2



**OUR WHITE MINI
TRUNKING LENGTHS
ARE MANUFACTURED
USING BETWEEN 80
AND 100% RECYCLED
MATERIAL.**

