

BENDEX

An economical range of cable management solutions including PVC-U trunking, conduit, cable protection guard, channelling and accessory boxes.



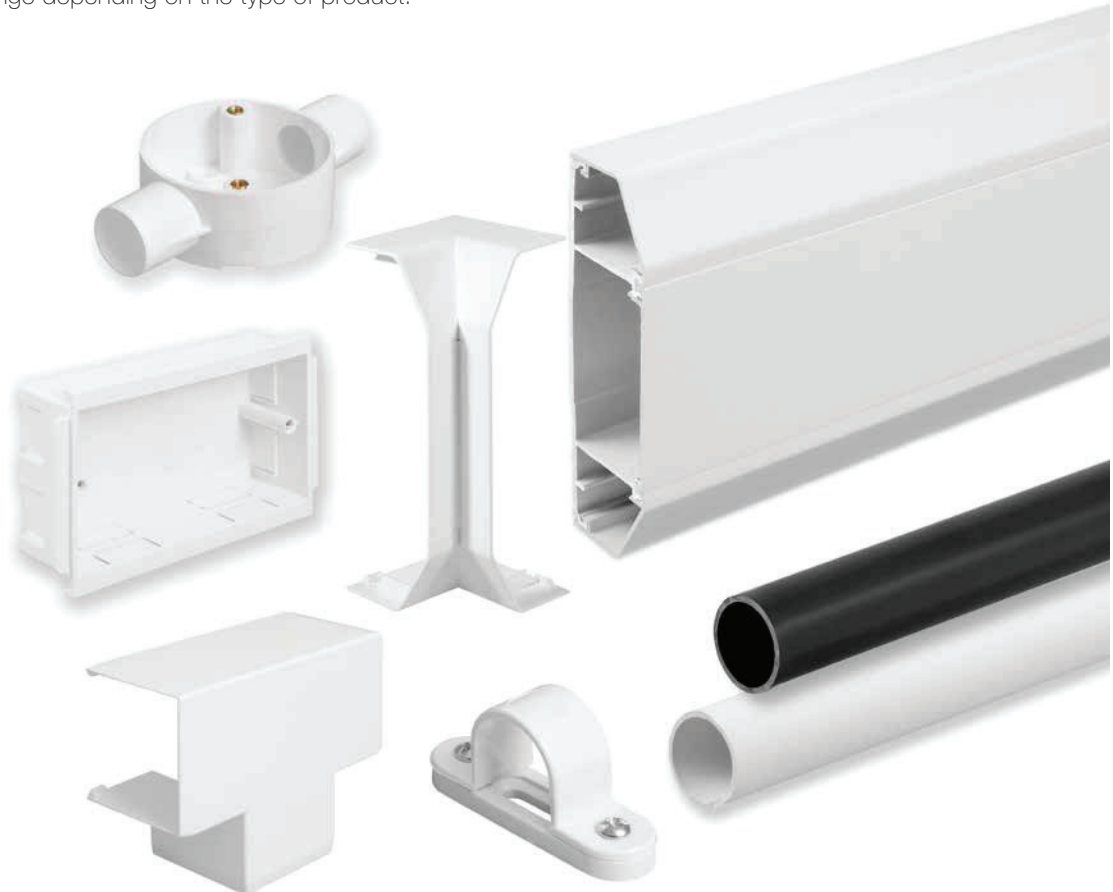
BENDEX

BENDEX CABLE MANAGEMENT



Bendex is a range of affordably priced essential cable management solutions, manufactured in the UK by Marshall-Tufflex. The range includes PVC-U trunking, conduit, cable protection guard, channelling, surface boxes and IP rated sockets.

As with the Marshall-Tufflex range, Bendex products are manufactured using a high percentage of recycled PVC-U which varies across the range depending on the type of product.



Environmental & sustainability



- We use recycled PVC-U in our manufacturing process, reducing carbon emissions in doing so.
- Research has shown that the use of recycled PVC offers a 20-fold reduction in greenhouse gas (GHG) emissions compared to virgin product. 100% recyclable material and has a long life cycle. We encourage our products to be recycled at the end of their useful life.
- PVC-U is a cost-effective, sustainable choice and comparable with other materials such as steel, aluminium, copper and wood.
- Virgin grade PVC-U has the lowest oil content of a commodity plastic.
- No increase in dioxin emission from Municipal Waste Incineration. No phthalates used in manufacture of PVC-U or FR-ABS.
- Lead-free formulations are used for mouldings and extrusions.
- No use of cadmium-based stabilisers or pigments.

Fire performance



- The fire rating for PVC-U is excellent* and PVC-U has all the characteristics required for Fire Escape Time.
- Highly resistant to ignition.
- Does little to contribute to the spread of fire and is classified to Building Regs: Class 0.
- Chars and is self-extinguishing.
- Has a low rate of smoke production during the early stages of a fire.
- Acts as an effective barrier to flame spread from malfunctioning electrical components within systems.
- Does not produce flaming droplets or burning debris.

*see the independent report at www.beama.org.uk

Challenger Three Compartment Trunking System**167 x 50mm**

Three compartment trunking system that can be fitted at dado or skirting level.



Page 60

Conduit & Channel

20, 25 and 32mm round conduit
13 to 32mm width oval conduit
13 to 38mm channel

Round or oval conduit, channel and fittings for a variety of general wiring requirements.



Page 66

Maxi Trunking & Accessories**28 x 28mm to 150 x 150mm**

Mid-size distribution trunking that can be sub-divided to carry power and data.



Page 64

Cable Protection Guard**19mm x 19mm to 80mm x 80mm**

To protect cables from impact and damage on telegraph poles and exposed brickwork



Page 68

Mini Trunking & Accessories**18 x 9mm to 38 x 38mm**

Small containment systems for general wiring requirements. Standard and self fix options.



Page 62

Loblite IP Rated Sockets**Single gang**

IP rated weatherproof sockets for use in demanding environments



Page 69

Standard colour

Bendex Mini and Maxi trunking systems are available in solid white RAL 9003.

Bendex conduit and channel systems are available in solid white RAL 9003 & black RAL 9005.

Bendex trunking systems are available in solid white RAL 9003.

CHALLENGER TRUNKING SYSTEM



Challenger is a three compartment trunking system compliant up to Cat 7a, suitable for office school or college environments. This easy to install system, can be fitted at dado or skirting level and includes a pre-drilled base to speed up installation.

- 167 x 50mm
- 3 segregated compartments
- Suitable for dado and skirting application
- Single piece moulded fittings
- Flat tees and flat angles with integral bend radius control
- Self-extinguishing and non-flame propagating PVC-U
- Recycled PVC-U is utilised in the manufacturing process



Data Information

- Compliant up to Cat 7a
- Standard bend radius 25mm

COMPLIANT UP TO
CAT 7A

Standard finish
WH
WH: WHITE



Challenger System 1 trunking assembly is manufactured using 53% recycled material



Challenger System 2 trunking assembly is manufactured using 51% recycled material

Trunking profiles



Challenger System 1 trunking assembly

code	width x height	pack
XT1CWH	167 x 50mm	1 x 3m



Challenger System 2 trunking assembly

code	width x height	pack
XT2CWH	167 x 50mm	1 x 3m

Basic components



Base unit

code	pack
XT1BWH	4 x 3m



Main compartment cover

code	pack
XT1CLWH	8 x 3m



Angled cover

code	pack
XT1TBWH	8 x 3m



Square cover

code	pack
XT2TBWH	8 x 3m

System 1 fittings

**Coupler**

code	pack
XT1C0WH	2

**End cap**

code	pack
XT1ECWH	2

**Internal bend**

code	pack
XT1IBWH	2

**External bend**

code	pack
XT1EBWH	2

**Flat angle**

code	pack
XT1FAWH (Moulded)	1

**Flat tee**

code	pack
XT1FTWH (Moulded)	1

Fire clips

**Fire clip Challenger centre compartment**

code	pack
FCSPC	50

**Fire clip Challenger compartment**

code	comp	pack
FCSPAC	angle	100
FCSPS	square	100

For fire clip fixings, please see page 65

System 2 fittings

**Coupler**

code	pack
XT2C0WH	2

**End cap**

code	description	pack
XT2ECLWH	left	2
XT2ECRWH	right	2

**Internal bend**

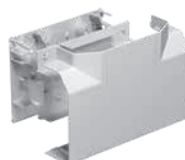
code	pack
XT2IBWH	2

**External bend**

code	pack
XT2EBWH	2

**Flat angle - upward**

code	description	pack
XT2FAUWH	moulded	1

**Flat tee - upward**

code	description	pack
XT2FTUWH	moulded	1

System 2 - horizontal.
System 1 - vertical.

Accessory boxes

**1 gang outlet box**

code	depth	pack
XTBB1WH	30mm	20

**2 gang outlet box**

code	depth	pack
XTBB2WH	30mm	10

Fittings

**Angled mini trunking adapter**

code	fit	pack
EATA2WH	MMT2	5
EATA4WH	MMT4	5

MINI TRUNKING



Bendex mini trunking is manufactured from white PVC-U and is designed with speed of installation in mind. Available with a self-adhesive backing and a full range of accessories.

Product information

- A variety of sizes from 18 x 9mm to 38 x 38mm
- Self-adhesive version available
- Self-extinguishing and non-flame propagating PVC-U
- Manufactured using recycled PVC-U
- Universal boxes for use with both Mini trunking and Conduit

Standard finish
WH
WH: WHITE



Bendex mini trunking lengths are manufactured using 100% recycled material



Standard profile

code	size	pack
AT18WH*	18 x 9mm	20 x 3m
MT16WH	16 x 16mm	20 x 3m
MT25WH	25 x 16mm	20 x 3m
MT38WH	38 x 16mm	20 x 3m
MT40WH	38 x 25mm	10 x 3m
MT40SWH*	38 x 38mm	10 x 3m

* No accessories available

Self-fixing profile

code	size	pack
SFAT18WH*	18 x 9mm	20 x 3m
SFMT16WH	16 x 16mm	20 x 3m
SFMT25WH	25 x 16mm	20 x 3m
SFMT38WH	38 x 16mm	20 x 3m
SFMT40WH	38 x 25mm	10 x 3m
SFMT40SWH*	38 x 38mm	10 x 3m

* No accessories available

Fittings



External coupler

code	size	pack
MT16CWH	16 x 16mm	10
MT25CWH	25 x 16mm	10
MT38CWH	38 x 16mm	10
MT40CWH	38 x 25mm	10



End cap

code	size	pack
MT16ECWH	16 x 16mm	10
MT25ECWH	25 x 16mm	10
MT38ECWH	38 x 16mm	10
MT40ECWH	38 x 25mm	10



Internal angle

code	size	pack
MT16IAWH	16 x 16mm	10
MT25IAWH	25 x 16mm	10
MT38IAWH	38 x 16mm	10
MT40IAWH	38 x 25mm	10



External angle

code	size	pack
MT16EAWH	16 x 16mm	10
MT25EAWH	25 x 16mm	10
MT38EAWH	38 x 16mm	10
MT40EAWH	38 x 25mm	10

Fittings

**Flat angle**

code	size	pack
MT16FAWH	16 x 16mm	10
MT25FAWH	25 x 16mm	10
MT38FAWH	38 x 16mm	10
MT40FAWH	38 x 25mm	10

**Flat tee**

code	size	pack
MT16TWH	16 x 16mm	10
MT25TWH	25 x 16mm	10
MT38TWH	38 x 16mm	10
MT40TWH	38 x 25mm	10

Surface boxes

**1 Gang Universal Box**

code	description	pack
SB1RCWH	Round corners 32mm deep	20
SB1SCWH	Square corners 32mm deep	20

**2 Gang Universal Box**

code	description	pack
SB2RCWH	Round corners 32mm deep	10
SB2SCWH	Square corners 32mm deep	10

**Surface box adaptor**

code	description	pack
MTA25WH	25mm Adaptor	10

**Ceiling rose adaptor**

code	description	pack
MTCRBWH	2 K.O. for MT16/MT25	10

Will accept all popular brands of ceiling rose. Supplied with fixing screws. Fixing centres 50.8mm. Internal depth 12mm. External diameter 81mm

Manufactured in white PVC-U and available with both round and square corners, Bendex universal boxes incorporate both conduit and mini trunking knockouts

MAXI TRUNKING



Bendex maxi trunking is a mid-size distribution trunking that can be sub-divided to carry power and data. Manufactured from white PVC-U.

Product information

- A variety of sizes from 28 x 28mm to 150 x 150mm
- Single or divided compartment options
- Self-extinguishing and non-flame propagating PVC-U
- Manufactured using recycled PVC-U



Standard finish
WH
WH: WHITE



Maxi trunking profiles



Maxi trunking profile

code	size	pack
CT10WH	28 x 28mm	10 x 3m
CT30WH	50 x 50mm	6 x 3m
CT40WH	75 x 50mm	6 x 3m
CT50WH	75 x 75mm	6 x 3m
CT60WH	100 x 100mm	2 x 3m
CT70WH	100 x 50mm	4 x 3m
CT80WH	150 x 150mm	2 x 3m

Self-fixing dividing fillet

code	size	pack
SFDF50WH	50mm	10 x 3m

Fittings



Coupler

code	size	pack
CT10CWH*	28 x 28mm	10
CT30CWH	50 x 50mm	10
CT40CWH	75 x 50mm	10
CT50CWH	75 x 75mm	5
CT60CWH	100 x 100mm	5
CT70CWH	100 x 50mm	10
CT80CWH	150 x 150mm	5

* External coupler. All other couplers are internal



Joint cover

code	size	pack
CT30JCWH	50 x 50mm	1
CT70JCWH	100 x 50mm	1



End cap

code	size	pack
CT10ECWH	28 x 28mm	10
CT30ECWH	50 x 50mm	10
CT40ECWH	75 x 50mm	10
CT50ECWH	75 x 75mm	10
CT60ECWH	100 x 100mm	1
CT70ECWH	100 x 50mm	1
CT80ECWH	150 x 150mm	1



Internal angle

code	size	pack
CT10IAWH	28 x 28mm	10
CT30IAWH	50 x 50mm	1
CT40IAWH*	75 x 50mm	1
CT50IAWH*	75 x 75mm	1
CT60IAWH*	100 x 100mm	1
CT70IAWH	100 x 50mm	1
CT80IAWH*	150 x 150mm	1

* Fabricated

Fittings



External angle

code	size	pack
CT10EAWH	28 x 28mm	10
CT30EAWH	50 x 50mm	1
CT40EAWH*	75 x 50mm	1
CT50EAWH*	75 x 75mm	1
CT60EAWH*	100 x 100mm	1
CT70EAWH	100 x 50mm	1
CT80EAWH*	150 x 150mm	1

* Fabricated



Flat angle

code	size	pack
CT10FAWH	28 x 28mm	10
CT30FAWH	50 x 50mm	1
CT40FAWH*	75 x 50mm	1
CT50FAWH*	75 x 75mm	1
CT60FAWH*	100 x 100mm	1
CT70FAWH	100 x 50mm	1
CT80FAWH*	150 x 150mm	1

* Fabricated



Flat tee

code	size	pack
CT10TWH	28 x 28mm	10
CT30TWH	50 x 50mm	1
CT40TWH*	75 x 50mm	1
CT50TWH*	75 x 75mm	1
CT60TWH*	100 x 100mm	1
CT70TWH	100 x 50mm	1
CT80TWH*	150 x 150mm	1

* Fabricated

Maxi trunking fire clips

Fire clip internal
for CT40WH

code	trunking size	pack
FCMTRS75/50	75 x 50mm	50

Fire clip internal
for CT50WH

code	trunking size	pack
FCMTRS75	75 x 75mm	50

Fire clip internal
for CT60WH

code	trunking size	pack
FCMTRS100	100 x 100mm	50

Fire clip internal
for CT70WH

code	trunking size	pack
FCMTRS100/50	100 x 50mm	50

Fire clip fixings

Masonry screws &
washers

code	pack
FCMS	100



Cavity fixings & screws

code	pack
FCCS	50

We recommend using self tapping masonry or cavity screws and washers for all Fire clip installations in order to assist with meeting BS 7671 Wiring Regulations.

CONDUIT & CHANNEL SYSTEMS



Bendex round or oval conduit, channel and fittings. Manufactured from high impact, self extinguishing PVC-U.

Product information

- Light and heavy gauge options
- 20, 25 and 32mm round conduit in black or white
- A variety of white oval conduit from 13 to 32mm width
- Robust white PVC-U channel to protect electrical wiring routes

Colour code suffix: to indicate the finish you require, add the required colour code to the end of the product code.

Standard finish	
WH	BK
WH: WHITE BK: BLACK	



Light gauge

code	O.D	pack
LG20WH	20mm	30 x 3m
LG25WH	25mm	30 x 3m



Heavy gauge

code	O.D	pack
HG20WH	20mm	30 x 3m
HG25WH	25mm	30 x 3m
HG32WH*	32mm	10 x 3m

* Available in white only



Oval conduit (white only)

code	O.D	pack
OC13WH	13 x 8.6mm	50 x 3m
OC16WH	16 x 10mm	50 x 3m
OC20WH	20 x 11mm	50 x 3m
OC25WH	25 x 11mm	50 x 3m
OC32WH	32 x 12mm	25 x 3m



Channel (white only)

code	O.D	pack
CH13WH	13 x 8mm	50 x 2m
CH25WH	25 x 8mm	50 x 2m
CH38WH	38 x 9mm	50 x 2m



Expansion coupler

code	size	pack
EX20WH	20mm	20



Straight coupler

code	size	pack
SC20WH	20mm	100
SC25WH	25mm	50
SC32WH*	32mm	25

* Available in white only



Elbow bend

code	size	pack
IE20WH	20mm	20



Inspection bend

code	size	pack
IB20WH	20mm	20
IB25WH	25mm	20



Inspection tee

code	size	pack
IT20WH	20mm	20
IT25WH	25mm	20



Normal bend

code	size	pack
NB20WH	20mm	25
NB25WH	25mm	10



Female adapter

code	size	pack
A20MBWH	20mm	100
A25MBWH	25mm	50
A32MBWH *	32mm	25

* Available in white only



Male adapter

code	size	pack
A20LRWH	20mm	100
A25LRWH	25mm	50



Male bush threaded

code	size	pack
MB20WH	20mm	100
MB25WH	25mm	100



Lock ring

code	size	pack
LR20WH	20mm	100
LR25WH	25mm	100



Spring clip saddle

code	size	pack
SCS20WH	20mm	100
SCS25WH	25mm	50



Oval spring clip

code	size	pack
OSC20WH	20mm	100
OSC25WH	25mm	100

Conduit fittings

**Spacer bar saddle**

code	size	pack
SBS20WH	20mm	100
SBS25WH	25mm	50
SBS32WH*	32mm	50

* Available in white only

**Bending spring**

code	size	pack
BS20L	20mm light	1
BS20H	20mm heavy	1
BS25L	25mm light	1
BS25H	25mm heavy	1

Marshall-Tufflex conduit fire clips can also be used with Bendex conduit. Please see page 55.

Circular boxes

**Loop-in box (4 knockouts)**

code	size	pack
LIB20K0WH	20mm	20

**1 way terminal box**

code	size	pack
CJB201WTWH	20mm	20
CJB251WTWH	25mm	20

**2 way through box**

code	size	pack
CJB202WTWH	20mm	20
CJB252WTWH	25mm	20

**2 way angle box**

code	size	pack
CJB202WAWH	20mm	20
CJB252WAWH	25mm	20

**3 way angle box**

code	size	pack
CJB203WTWH	20mm	20
CJB253WTWH	25mm	20

**4 way intersection box**

code	size	pack
CJB204WTWH	20mm	20
CJB254WTWH	25mm	20

Accessories

**Extension ring**

code	size	pack
ER20WH	20mm	20
ER25WH	25mm	20

* Available in white only

**Circular lid**

code	size	pack
LID1WH	65mm	100

**Overlapping lid**

code	size	pack
LID2WH	85mm	50

* Available in white only

**Adhesive**

code	size	pack
MSC	250ml	1

Dry lining boxes

**1 gang box**

code	depth	pack
BDL1WH	34mm	20

6-14mm adjustment

**2 gang box**

code	depth	pack
BDL2WH	34mm	10

6-14mm adjustment

CABLE PROTECTION GUARD



Bendex cable protection guard is the perfect solution to protect cables from impact and damage on telegraph poles and exposed brickwork. Highly shock-resistant but light in weight, it is easy to transport and install thanks to pre-drilled screw holes.

Product information

- Supplied with pre-drilled screw holes for easy installation
- Lightweight and easily transported
- Shock resistant
- Manufactured in high quality black PVC-U for extra impact protection
- Bendex cable guard is BT specified



Cable protection guard

code	size	pack
CG19BK	19 x 19mm	10 x 3m
CG25BK	25 x 25mm	10 x 3m
CG40BK	40 x 40mm	10 x 3m
CG55BK	55 x 55mm	10 x 3m
CG80BK	80 x 80mm	5 x 3m



LOBLITE IP RATED SOCKETS

IP rated 13A-230V sockets that are weatherproof to IP66 when in use (fully closed). Engineered to perform in demanding environments, including industrial buildings, garages, farms, gardens, swimming pool areas, wherever exposure to dust or water may be encountered.

IP66 explained

First digit (6) = solid protection

Totally protected against dust

Second digit (6) = liquid protection

Protection against strong jets of water eg. on ship decks, limited ingress permitted



IP Socket



1 gang IP66 socket

code	colour	pack
LOBSGSKTWH	white	1
LOBSGSKTLG	light grey	1

**WE USE RECYCLED
WINDOWS TO CREATE
BENDEX CABLE
MANAGEMENT
PRODUCTS.**



**REASSURINGLY
RECYCLED**

Bendex



ALL OF OUR PVC-U PRODUCTS CAN BE RECYCLED...

Prevent PVC-U being placed into landfill by recycling our products at the end of their useful life.

