

136x125mm



Switched socket outlets with interlock

OMNIA Series

Switch-disconnectors - IP65

ISOLATORS Series



Poles	A	Volt	Colour	With fuse holder				A	Poles	φ	General use	Emergency Switching
				IP44	IP66/IP67	IP44	IP66/IP67					
2P	16	24	Blue	400.2416	405.2416	-	-	2	1/12	590.GR2002	590.ER2002	
	16	200-250	Blue	400.1683	405.1683	401.1683	406.1683	3	1/12	590.GR2003	590.ER2003	
2P+E	32	200-250	Blue	400.3283	405.3283	401.3283	406.3283	4	1/12	590.GR2004	590.ER2004	
	63	200-250	Blue	-	405.6383	-	-	2	1/12	590.GR3202	590.ER3202	
3P+E	16	380-415	Red	400.1686	405.1686	401.1686	406.1686	3A	3	1/12	590.GR3203	590.ER3203
	32	380-415	Red	400.3286	405.3286	401.3286	406.3286	4	1/12	590.GR3204	590.ER3204	
3P+N+E	63	380-415	Red	-	405.6386	-	-					
	16	346-415	Red	400.1687	405.1687	401.1687	406.1687					
	32	346-415	Red	400.3287	405.3287	401.3287	406.3287					
	63	346-415	Red	-	405.6387	-	-					

Sockets for domestic applications

OMNIPLUS Series



Description	Standard	φ	Without protection	Fuse (*)	MCB	RCBO
2P+E	GERMAN	1/6	409.0407	409.1407	409.2407	409.3407
16A - 250V-	FRENCH	1/6	409.0411	409.1411	409.2411	409.3411
2P+E	BRITISH BS1363	1/6	409.0413	409.1413	409.2413	409.3413
2P+E	INDIAN	1/6	409.0429	409.1429	409.2429	409.3429
2P+E	NEW ZEALAND	1/6	409.0427	409.1427	409.2427	409.3427
2P+E	SOUTH AFRICAN	1/6	409.0428	409.1428	409.2428	409.3428

(*) 10A - 250V-

70x87mm



Flush mounting sockets outlets

OPTIMA Series

84x106mm



Sockets for domestic applications

DOMO/DOMOPLUS Series

Poles	A	Volt	Colour	Flange		Description	Standard	φ			
				50x60 mm	70x87 mm						
2P	16	24	Blue	430.1615	435.1615	2P+E	GERMAN	10/100	570.2062	570.4062	570.6407
	16	200-250	Blue	413.1663(+)	418.1663(+)	2P+E	FRENCH	10/100	570.2091	570.4091	570.6411
2P+E	32	200-250	Blue	413.3263(+)	418.3263(+)	2P+E	BRITISH BS1363	10/100	570.2041	570.4041	570.6413
	16	380-415	Red	413.1666(+)	418.1666(+)	2P+E	BRITISH BS546	10/100	-	-	570.6414
3P+E	32	380-415	Red	413.3266(+)	418.3266(+)	2P+E	NEW ZEALAND	10/100	-	-	570.6427
	16	346-415	Red	413.1667(+)	418.1667(+)	2P+E	SOUTH AFRICAN	10/100	-	-	570.6428
3P+N+E	32	346-415	Red	413.3267(+)	418.3267(+)						

(*) Versions also available with spring terminals; just add "F" at the end of the catalogue number. Example: 413.1663F

Flanges

ACCESSOIRES



Description	φ	Flange 70x87 mm
For enclosure DOMINO Series, BLOCK Series MBOX Series	25	654.0100
Flange 75x75 on 84x106mm	5	654.0108
Cabinet fixing for bases 50x60mm on ENERBOX Series lateral knockouts	10	570.2001

Front operators

COMMAND Series



Description	Switch disconnectors	Knob	Front plate	φ	Flange 70x87 mm
Suitable for R switch disconnectors	16A, 32A, 40A	Red	Yellow	1/10	590.YM70R1
	63A, 80A, 100A	Red	Yellow	1/10	590.YM70R2
Suitable for R switch disconnectors	63A, 80A, 100A	Red	Yellow	1/10	590.YM70R6
	63A, 80A, 100A	Red	Yellow	1/10	590.YM70R7

106x240mm



Module 106 (compact)

136x390mm



Module 136 (large)

Switched socket outlets with interlock

ADVANCE2 Series

OMNIA Series



Poles	A	Volt	Colour	With fuse holder		With DIN rail (6 modules)		IP44	IP66/IP67	IP44	IP66/IP67
				IP44	IP66/IP67	IP44	IP66/IP67				
2P	16	24	Blue	565.2416	565.2416/S	565.2516	564.2516/S	-	-	500.2420	505.2420
	16	200-250	Blue	560.1683	561.1683	562.1683	563.1683	567.1683	568.1683	500.1683	505.1683
2P+T	32	200-250	Blue	560.3283	561.3283	562.3283	563.3283	567.3283	568.3283	500.3283	505.3283
	63	200-250	Blue	-	561.6383	-	563.6383	-	568.6383	-	505.M6383
2P+E	125	200-250	Blue	-	-	-	-	-	-	-	-
	16	380-415	Red	560.1686	561.1686	562.1686	563.1686	567.1686	568.1686	500.1686	505.1686
3P+T	32	380-415	Red	560.3286	561.3286	562.3286	563.3286	567.3286	568.3286	500.3286	505.3286
	63	380-415	Red	-	561.6386	-	563.6386	-	568.6386	-	505.M6386
3P+E	125	380-415	Red	-	-	-	557.12586	-	-	-	-
	16	346-415	Red	560.1687	561.1687	562.1687	563.1687	567.1687	568.1687	500.1687	505.1687
3P+N+T	32	346-415	Red	560.3287	561.3287	562.3287	563.3287	567.3287	568.3287	500.3287	505.3287
	63	346-415	Red	-	561.6387	-	563.6387	-	568.6387	-	505.M6387
	125	346-415	Red	-	-	-	557.12587	-	-	-	-



ADVANCE2 System

MBOX Series

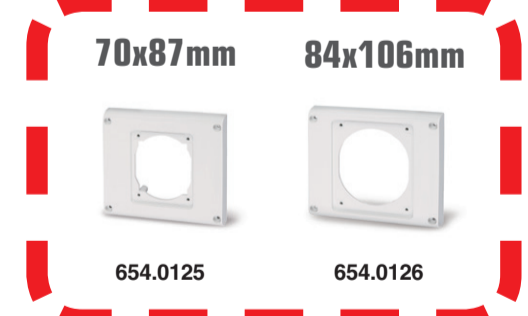


Module	φ	Flange 70x87	φ	Flange 70x87	φ	Flange 70x87	φ	Flange 70x87
Module 106 (compact)	12	576.4300	12	576.4303	12	576.4301	6	576.4304
Module 136 (large)	6	576.4340	12	576.4323	12	576.4321	6	576.4324

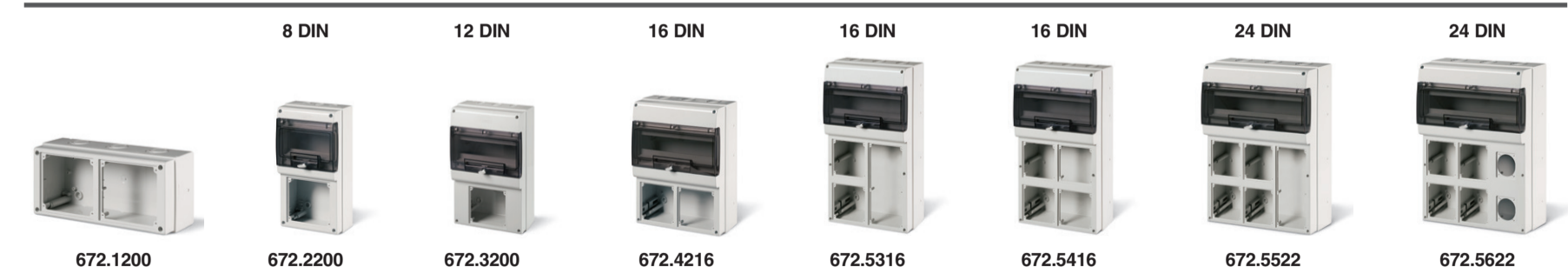
MBOX5	φ	Flange 70x87
MBOX5	658.0050-000	658.0051-000



MBOX Series



DOMINO Series



OMNIA System



MBOX Series



ENERBOX Series



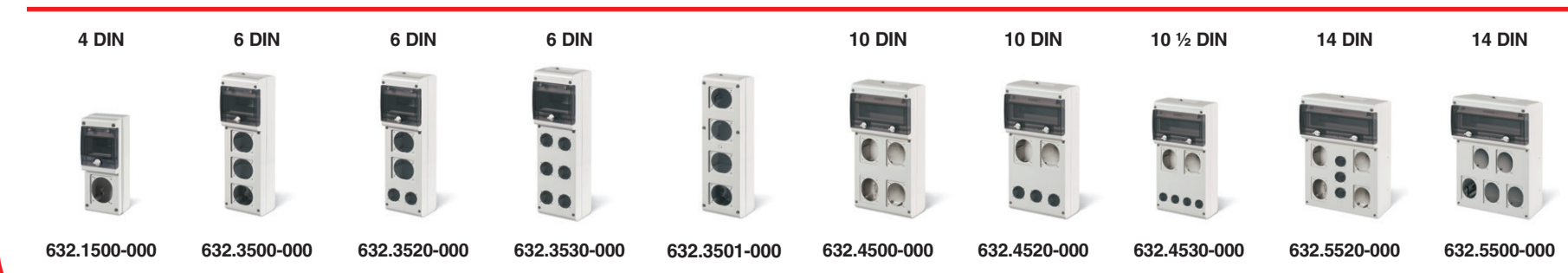
DOMO Series



DOMINO Series



BLOCK Series



Industrial plugs and sockets

OPTIMA Series



Poles	A	Volt	Colour	Base version		Top version		Top switch version	
				IP44/IP54	IP66/IP67/IP69	IP44/IP54	IP66/IP67/IP69	IP44/IP54	IP66/IP67/IP69
2P	16	24	Blue	230.1600	235.1600	330.1605	335.1605	-	-
	16	200-250	Blue	213.1633(+)	218.1633(+)	313.1643(+)	318.1643(+)	513.1653	518.1653(+)
2P+E	32	200-250	Blue	213.3233(+)	218.3233(+)	313.3243(+)	318.3243(+)	513.3253	518.3253(+)
	63	200-250	Blue	213.6333	218.6333	313.6343	318.6343	513.6353(+)	518.6353(+)
3P+E	125	200-250	Blue	-	218.12533	-	318.12543	-	518.12553(+)
	16	380-415	Red	213.1636(+)	218.1636(+)	313.1646(+)	318.1646(+)	513.1656	518.1656(+)
3P+N+E	32	380-415	Red	213.3236(+)	218.3236(+)	313.3246(+)	318.3246(+)	513.3256	518.3256(+)
	63	380-415	Red	213.6336	218.6336	313.6346	318.6346	513.6356(+)	518.6356(+)
	125	380-415	Red	-	218.12536	-	318.12546	-	518.12556(+)
	16	346-415	Red	213.1637(+)	218.1637(+)	313.1647(+)	318.1647(+)	513.1657	518.1657(+)
	32	346-415	Red	213.3237(+)	218.3237(+)	313.3247(+)	318.3247(+)	513.3257	518.3257(+)
	63	346-415	Red	213.6337	218.6337	313.6347	318.6347	513.6357(+)	518.6357(+)
	125	346-415	Red	-	218.12537	-	318.12547	-	518.12557(+)

(*) Versions also available with spring terminals; just add "F" at the end of the catalogue number. Example: 413.1663F

(*) Versions also available with insulation perforating terminals; just add "P" at the end of the catalogue number. Example: 213.1633P



■ ADVANCE2 SERIES



■ TECHNICAL CHARACTERISTICS

Rated current:	16A-32A-63A-125A
Rated voltage:	100÷690V~
Frequency:	c.c. - 50÷500Hz
Insulating voltage:	500/690V~
Protection degree:	IP44-IP66/IP67
Operating ambient temperature according to the reference standard:	-25°C +40°C
Maximum operating ambient temperature:	60°C
Glow Wire test:	650°C/850°C
Material:	Engineering plastic
IK degree at 20°C:	IK07
Cable inlets:	Metric
Fuse-carriers:	gG 10,3x38mm (16-32A) Neozed type D02 (63A)
Colour:	Grey RAL 7035 front side and smoke-grey plate
Insulation class:	Class II (double insulation)

■ OMNIA SERIES



■ TECHNICAL CHARACTERISTICS

Rated current:	16A-32A-63A
Rated voltage:	100÷690V~
Frequency:	c.c. - 50÷500Hz
Insulating voltage:	500/690V~
Protection degree:	IP44-IP66/IP67
Operating ambient temperature according to the reference standard:	-25°C +40°C
Maximum operating ambient temperature:	60°C
Glow Wire test:	650°C/850°C
Material:	Engineering plastic
IK degree at 20°C:	IK08
Fuse-carriers:	gG 10,3x38 mm
Colour:	Grey RAL 7035
Insulation class:	Class II (double insulation)

■ OMNIPLUS SERIES



■ TECHNICAL CHARACTERISTICS

Rated current:	10A-16A
Rated voltage:	250 Vac
Frequency:	50 Hz
Insulating voltage:	250 Vac
Fuse:	10A - 250V~
MCB:	16A - 1P+N, C16, 3kA 10A - 1P+N, C10, 3kA 10A - 1P+N, C10, 10mA, 3kA
RCBO:	16A - 1P+N, C16, 10mA, 3kA 10A - 1P+N, C10, 10mA, 3kA
Protection degree:	IP56
Operating ambient temperature according to the reference standard:	-15°C +35°C
Maximum operating ambient temperature:	60°C
Glow Wire test:	650°C/850°C (Contact-holder base)
Material:	Engineering plastic
IK degree at 20°C:	IK08
Colour:	BASE: Grey RAL 7035 COVER: tinted transparent

1. Lockable door knob with blocking in position 0 and 1
2. Can be padlocked in position 0 and 1
3. Cover in darkened polycarbonate in order to see inside
4. Automatic spring closure
5. Version without protection, with fuse protection MCB, RCBO
6. Maintains the IP56 degree of protection with the plug inserted
7. With 1P+N blocking switch
8. Stainless steel screws

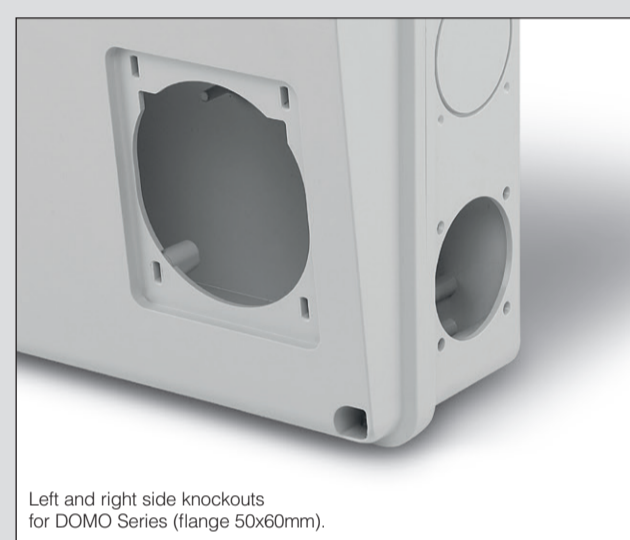


■ ENERBOX SERIES



■ TECHNICAL CHARACTERISTICS

Protection degree:	IP55
Operating ambient temperature according to the reference standard:	-25°C +35°C
Maximum operating ambient temperature:	60°C
Glow Wire test:	650°C
Material:	Engineering plastic
IK degree at 20°C:	IK08
Cable inlets:	PG16-PG21-PG29
Insulation class:	Class II (double insulation)
Disippable power according to CEI 23-49 standard:	9-15W
Colour:	Grey RAL7035



Left and right side knockouts for DOMO Series (flange 50x60mm).

■ DOMINO SERIES



■ TECHNICAL CHARACTERISTICS

Protection degree:	IP66
Operating ambient temperature according to the reference standard:	-25°C +35°C
Maximum operating ambient temperature:	60°C
Glow Wire test:	650°C
Material:	Engineering plastic
IK degree at 20°C:	IK07
Cable inlets:	PG/METRICO
Insulation class:	Class II (double insulation)
Disippable power according to CEI 23-49 standard:	9-140W
Colour:	Grey RAL 7035 White RAL 9003
Terminal blocks fixing possibility:	Yes
Insulation class:	Class II (double insulation)



■ BLOCK SERIES



■ TECHNICAL CHARACTERISTICS

Protection degree:	IP66
Operating ambient temperature according to the reference standard:	-25°C +35°C
Maximum operating ambient temperature:	60°C
Glow Wire test:	650°C
Material:	Engineering plastic
IK degree at 20°C:	IK08
Cable inlets:	PG13,5 - PG21
Disippable power according to CEI 23-49 standard:	8-15W
Colour:	Grey RAL 7035
Insulation class:	Class II (double insulation)



■ OPTIMA SERIES



■ TECHNICAL CHARACTERISTICS

Rated current:	16A-32A-63A-125A
Rated voltage:	100÷690V~
Frequency:	c.c. - 50÷500Hz
Insulating voltage:	500/690V~
Protection degree:	IP44/IP54 - IP66/IP67/IP69
Operating ambient temperature according to the reference standard:	-25°C +40°C
Maximum operating ambient temperature:	60°C
Glow Wire test:	650°C/850°C
Material:	Engineering plastic
IK degree at 20°C:	IK08
Halogen free:	Yes
Terminals:	Screw (16A-32A) Insulation perforating (16A mobile) Spring (32A mobile) Spring (16-32A flush/ surface mounting) Mantle (63A-125A)

Dispositivo Safe-in:	16A
Dispositivo Snap-on:	16A-32A
Nickel-plated pins:	16A-32A-63A-125A



On the 16A and 32A "Snap-on" device with stainless steel spring to guarantee frequent opening/closing (possibility to inspect the terminals).

External cable stay with tulip clamping having IP66/IP67/IP69 cable gland functions (the device is used on both IP44/IP54 and IP66/IP67/IP69 products).

■ DOMO/DOMOPLUS SERIES



■ TECHNICAL CHARACTERISTICS DOMO

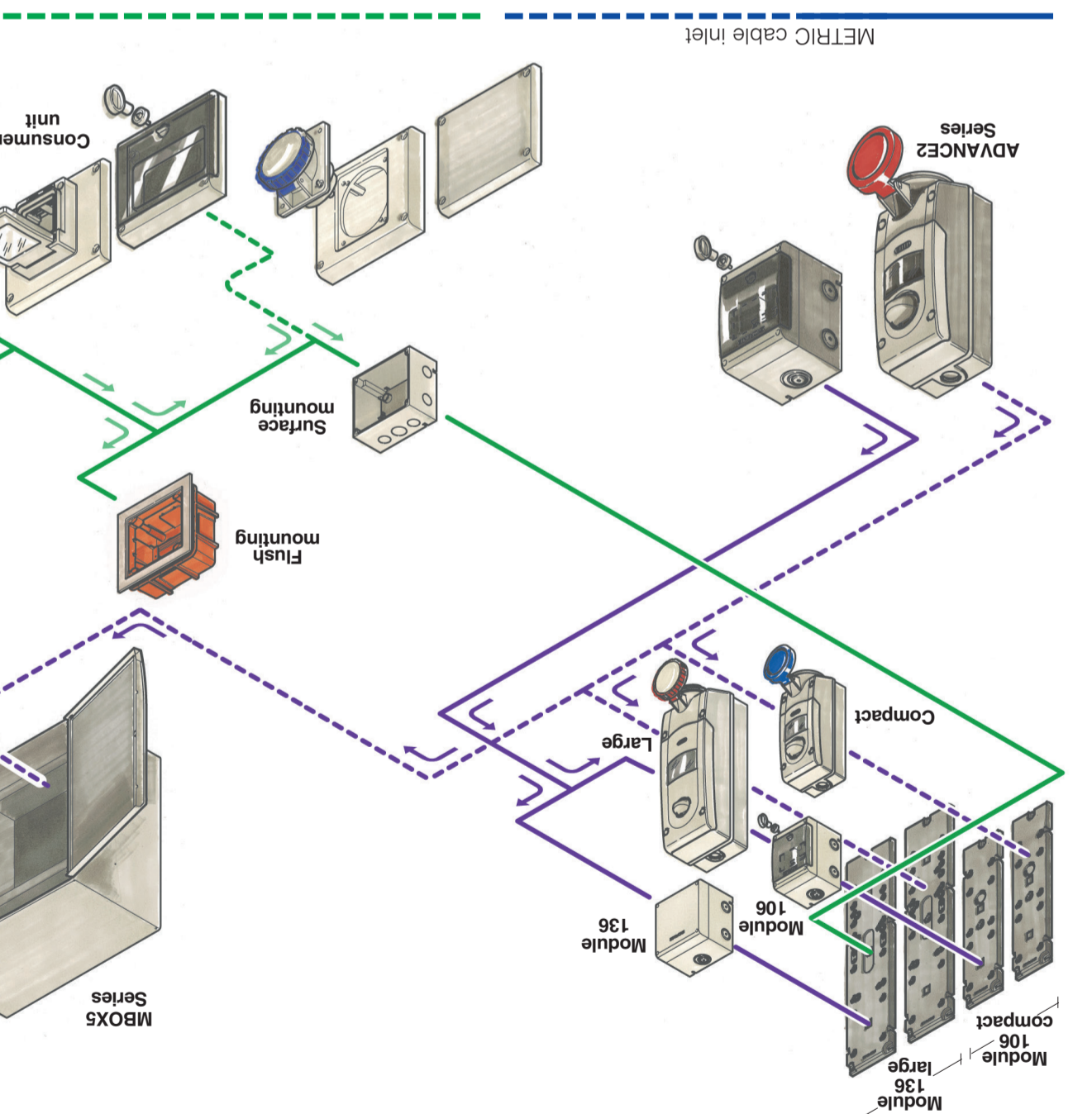
Rated current:	16A
Rated voltage:	250V~
Frequency:	50Hz
Insulating voltage:	690V~
Protection degree:	IP44 closed cover/IP54
Operating ambient temperature according to the reference standard:	-25°C +35°C
Maximum operating ambient temperature:	60°C
Glow Wire test:	650°C/750°C
Material:	Engineering plastic
Cabling capacity of the terminals:	1,5mm²+2x2,5mm²

■ TECHNICAL CHARACTERISTICS DOMOPLUS

Rated current:	6A-10A-15A-16A
Rated voltage:	250V~
Frequency:	50Hz
Insulating voltage:	250V~
Protection degree:	IP66 (also with plug inserted)
Operating ambient temperature:	-5°C +60°C
Installation ambient temperature:	-20°C +50°C
Glow Wire test:	650°C / 850°C (Contact-holder base)
Halogen Free:	Si
Material:	Engineering plastic
IK degree at 20°C:	IK08
Colour:	Base: Grey RAL 7035 Cover: tinted polycarbonate

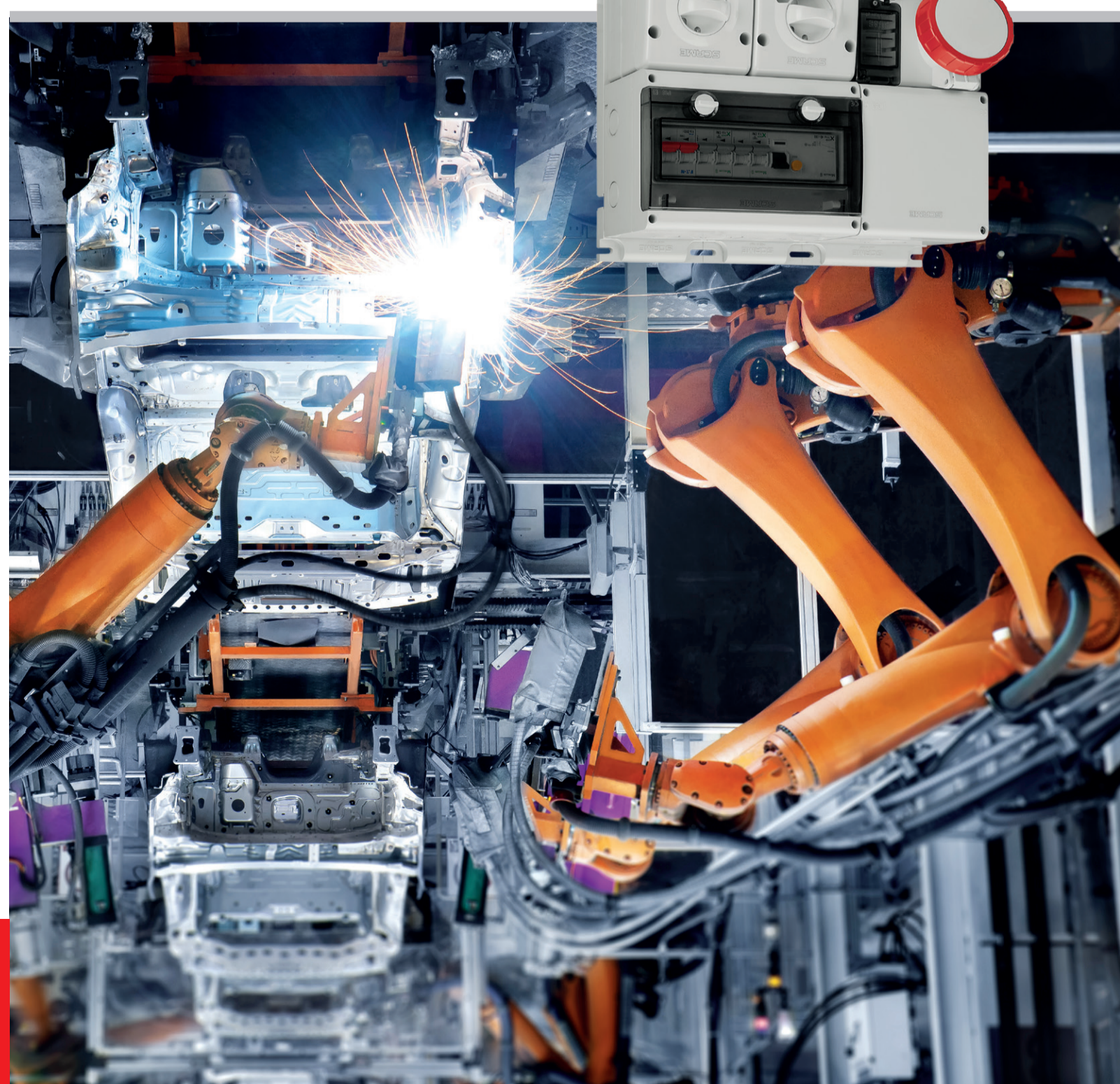


OMNIA System ADVANCE 2 System



SCAME produces three integrated systems for assembling electrical distribution and connection installations:
- DOMINO System a modular system for enclosures for distribution assemblies and consumer units
- ADVANCE 2 System a modular system for combination units
- OMNIA System a modular flush and surface mounting system.

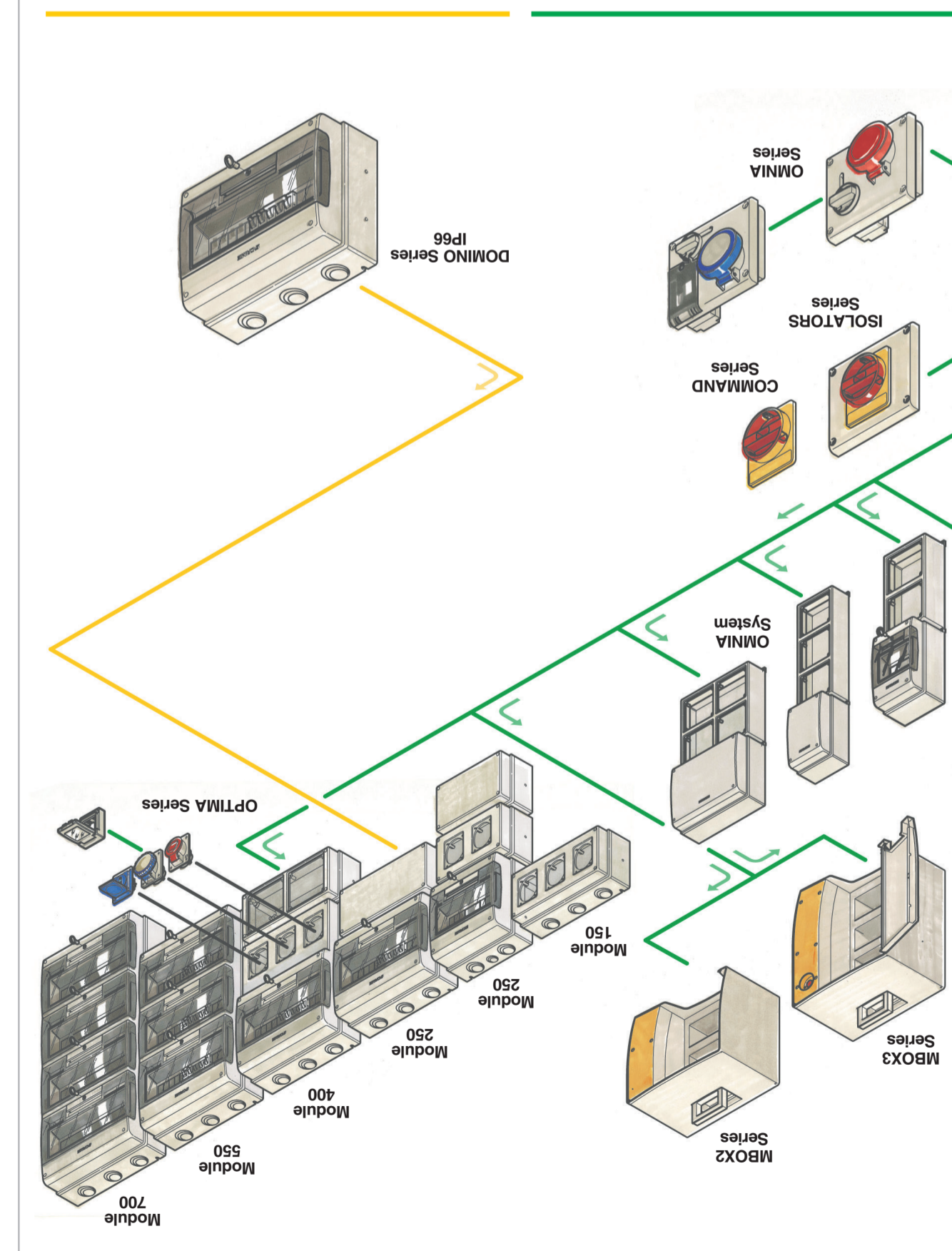
Integrated Systems



SCAME Online
www.scame.com
export@scame.com
SCAME PARRE S.p.A.
VIA COSTA ERTA, 15
24020 PARRE (BG) ITALY
TEL. +39 035 703500
FAX +39 035 703122



DOMINO System OMNIA Series



Integrated Systems

