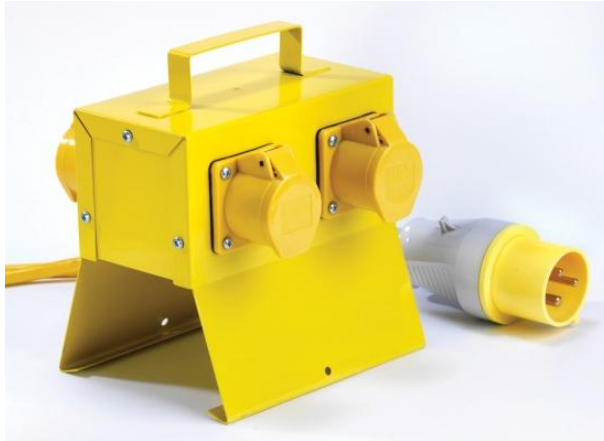


Power Splitter



Description

The Briticent splitter box is designed to split a single line input into four separate outputs which allow multiple feed power access from a single feed supply.

Features

- Yellow steel body
- Supplied with 5m lead and 16A plug to BS EN 60309
- Four 16A 110V socket outlets to BS EN 60309
- Includes carry handle

Range

Power Splitter

PS45

Technical Specification

Voltage	110V
Plug	16A
Socket Outlets	4 x 16A
Cable Length	5m
Cable Thickness	2.5mm
IP Rating	IP44

Dimensions

Height	250mm
Width	180mm
Depth	250mm
Weight	2.7Kg