




Ground lights.

01604 495 151
collingwoodlighting.com

 @collingwoodLED
 /collingwoodlighting
 collingwoodled

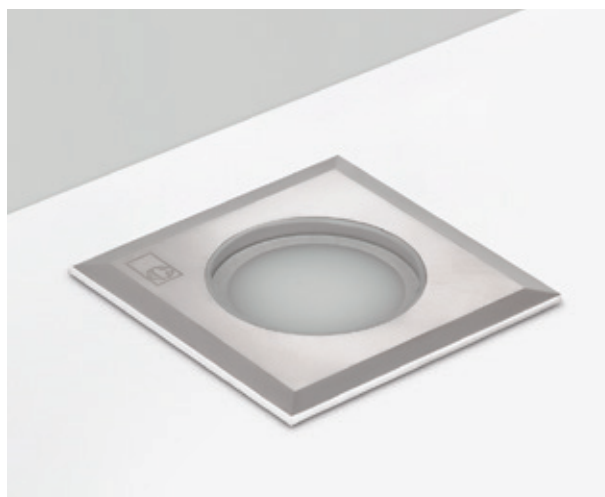
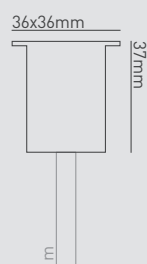
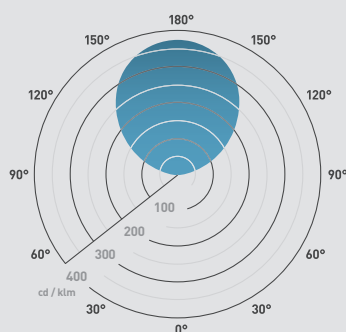
GUARANTEE / WARRANTY

7 year extended warranty

FEATURES & BENEFITS

Frosted effect for softer tone of light
Low profile for easy installation
Robust cable for outdoor use
Square fascia for a different decorative effect
Parallel wiring for easier installation and more fittings to a power supply

Beam angle: 120°



GL018 SQ

Small square LED marker light

FEATURES

Wattage	0.5W
IP rating	IP68
IK rating	IK07
Colour flexibility	Fixed colour
Walk over / drive over	Walk over (5mm toughened glass)
Input	24V DC
LED lifetime	30,000h
SDCM	3SDCM

INSTALLATION INFORMATION

Cut out size	Ø 28mm
Bathroom zone	0
Inrush current	N/A
Construction material	Stainless steel (316)
Weight	300g
Maximum ambient temperature	35°C
SELV	N/A
Electric class (1, 2, 3)	3

PHOTOMETRICS @ 25°C

Product code	Colour	Beam angle	CRI	lm	lm/W	lx at 1m
GL018 SQ NW	4000K	120°	>70Ra	3	6	1
GL018 SQ WW	3000K	120°	>80Ra	3	6	1
GL018 SQ 27	2700K	120°	>80Ra	3	6	1
GL018 SQ BLUE	Blue	120°	-	-	-	-

WIRING INFORMATION

Cable / flying lead	1m (H05RN-F) rubberised cable (outside diameter: 6mm)
Type of wiring required	Parallel

LED DRIVERS

Product code	Input	SELV	Dimming	Bathroom zone	Min	Max
PS1524	220-240V	Yes	Yes (PDCINT1-10V)	0 (1 when dimming)	1	30
PS5024	N/A	Yes	Yes (PDCINT1-10V)	0 (1 when dimming)	1	100
PSDIP10024	N/A	Yes	Yes (1-10V)	0 (1 when dimming)	1	200

ACCESSORIES

JB1 / JB5 / JB6	IP68 waterproof connectors	Sold separately	422-423
PDC/GRID DIMMER	Grid dimmer kit for multiple fitting types	Sold separately	422
PDCINT1-10V	1-10V dimming interface for use with 24V LED drivers	Sold separately	412