

ECO SERIES Wireless Switch/ Receiver Controller

SKU Code:
WJS1050/WJS1051/WJS1052/WJS1050B/WJS1051B/WJS1052B/WJS1050S/
WJS1051S/WJS1052S/WJS1055/WJS1056/WJS1057/WJS1060/WJS1061/WJS1062

Wireless Gang Switch, Installation-Easy, Battery-Free Wall On/Off Switch Outdoor Waterproof IP65
Wireless Kinetic Switch for Lamp Electric Appliance.



works with



Press with a finger
to produce
kinetic energy



Internal module
collects kinetic
energy



Kinetic energy is
converted into
electricity



Communication
module
transmits signal



Receiver
controls the
light

Features

- Self-supply and dimmable:** The non dimmer/dimmer switch requires no batteries and no power connection. The energy is built up kinetically by pressing the switch. Small structure and can be used as non dimmable as well as dimmable. Through long press to circularly dim the brightness to suit any activity. Turn on the light again, and it maintains the last light intensity. With this ENER-J light switch, you don't need to pay the extra money to buy a dimmer.
- Multiple light switches connectable:** A receiver can be connected with up to 10 switches. This allows you to operate a light source with multiple switches. Quite simply as additional switches to existing light switches. Stepless dimming function and storage brightness.
- Range and Usage:** The effective range between transmitter and receiver is approximately 30 meters indoors and approximately 160 meters outdoors. ENER-J receiver can connect to multiple ENER-J switches. Ideal to control your garden house, outdoor lighting from the comfort of the house!
- Never route power cables, ready for use:** No slots knocking, no junction box required. Wireless use without drilling and screws. Can be mounted with adhesive tape or simply screwed on. Ready for use within a few minutes. The radio switch allows you to mount in all places. For example, Glue in glass, marble, wood, metal surface or traditional with screw.
- Long life and warranty:** Ultra-low-power design. Useful life up to 50 years and up to 200,000 keystrokes. Comes with 2 years warranty.



Press with a finger to produce kinetic energy



Internal module collects kinetic energy



Kinetic energy is converted into electricity



Communication module transmits signal



Receiver controls the light

1 Gang Switch Technical Parameters

1. Model No: S111
2. SKU: WS1050
3. Work Type: Reciprocating work by 86 type lever
4. Power Model: Power generation by mechanical force
5. Work Frequency: 433MHz
6. Number Keys: 1 key
7. Colour: White
8. Lifetime: 100,000 times
9. Distance: 30m(indoor), 80m(outdoor)
10. Waterproof Level: IP65
11. Weight: 80g
12. Certification: CE, RoHS
13. Dimension: L86mm * W86mm * H14mm



Press with a finger to produce kinetic energy



Internal module collects kinetic energy



Kinetic energy is converted into electricity



Communication module transmits signal



Receiver controls the light

2 Gang Switch Technical Parameters

1. Model No: S112
2. SKU: WS1051
3. Work Type: Reciprocating work by 86 type lever
4. Power Model: Power generation by mechanical force
5. Work Frequency: 433MHz
6. Number Keys: 2 keys
7. Colour: White
8. Lifetime: 100,000 times
9. Distance: 30m(indoor), 80m(outdoor)
10. Waterproof Level: IP65
11. Weight: 80g
12. Certification: CE, RoHS
13. Dimension: L86mm * W86mm * H14mm



Press with a finger to produce kinetic energy



Internal module collects kinetic energy



Kinetic energy is converted into electricity



Communication module transmits signal



Receiver controls the light

3 Gang Switch Technical Parameters

1. Model No: S113
2. SKU: WS1052
3. Work Type: Reciprocating work by 86 type lever
4. Power Model: Power generation by mechanical force
5. Work Frequency: 433MHz
6. Number Keys: 3 keys
7. Colour: White
8. Lifetime: 100,000 times
9. Distance: 30m(indoor), 80m(outdoor)
10. Waterproof Level: IP65
11. Weight: 80g
12. Certification: CE, RoHS
13. Dimension: L86mm * W86mm * H14mm



IP65



Press with a finger to produce kinetic energy



Internal module collects kinetic energy



Kinetic energy is converted into electricity



Communication module transmits signal



Receiver controls the light

1 Gang Switch Technical Parameters

1. Model No: S111
2. SKU: WS1050B
3. Work Type: Reciprocating work by 86 type lever
4. Power Model: Power generation by mechanical force
5. Work Frequency: 433MHz
6. Number Keys: 1 key
7. Colour: Black
8. Lifetime: 100,000 times
9. Distance: 30m(indoor), 80m(outdoor)
10. Waterproof Level: IP65
11. Weight: 80g
12. Certification: CE, RoHS
13. Dimension: L86mm * W86mm * H14mm



IP65



Press with a finger to produce kinetic energy



Internal module collects kinetic energy



Kinetic energy is converted into electricity



Communication module transmits signal



Receiver controls the light

2 Gang Switch Technical Parameters

1. Model No: S112
2. SKU: WS1051B
3. Work Type: Reciprocating work by 86 type lever
4. Power Model: Power generation by mechanical force
5. Work Frequency: 433MHz
6. Number Keys: 2 keys
7. Colour: Black
8. Lifetime: 100,000 times
9. Distance: 30m(indoor), 80m(outdoor)
10. Waterproof Level: IP65
11. Weight: 80g
12. Certification: CE, RoHS
13. Dimension: L86mm * W86mm * H14mm



IP65



Press with a finger to produce kinetic energy



Internal module collects kinetic energy



Kinetic energy is converted into electricity



Communication module transmits signal



Receiver controls the light

3 Gang Switch Technical Parameters

1. Model No: S113
2. SKU: WS1052B
3. Work Type: Reciprocating work by 86 type lever
4. Power Model: Power generation by mechanical force
5. Work Frequency: 433MHz
6. Number Keys: 3 keys
7. Colour: Black
8. Lifetime: 100,000 times
9. Distance: 30m(indoor), 80m(outdoor)
10. Waterproof Level: IP65
11. Weight: 80g
12. Certification: CE, RoHS
13. Dimension: L86mm * W86mm * H14mm



Press with a finger to produce kinetic energy



Internal module collects kinetic energy



Kinetic energy is converted into electricity



Communication module transmits signal



Receiver controls the light

1 Gang Switch Technical Parameters

1. Model No: S111
2. SKU: WS1050S
3. Work Type: Reciprocating work by 86 type lever
4. Power Model: Power generation by mechanical force
5. Work Frequency: 433MHz
6. Number Keys: 1 key
7. Colour: Silver
8. Lifetime: 100,000 times
9. Distance: 30m(indoor), 80m(outdoor)
10. Waterproof Level: IP65
11. Weight: 80g
12. Certification: CE, RoHS
13. Dimension: L86mm * W86mm * H14mm



Press with a finger to produce kinetic energy



Internal module collects kinetic energy



Kinetic energy is converted into electricity



Communication module transmits signal



Receiver controls the light

2 Gang Switch Technical Parameters

1. Model No: S112
2. SKU: WS1051S
3. Work Type: Reciprocating work by 86 type lever
4. Power Model: Power generation by mechanical force
5. Work Frequency: 433MHz
6. Number Keys: 2 keys
7. Colour: Silver
8. Lifetime: 100,000 times
9. Distance: 30m(indoor), 80m(outdoor)
10. Waterproof Level: IP65
11. Weight: 80g
12. Certification: CE, RoHS
13. Dimension: L86mm * W86mm * H14mm



Press with a finger to produce kinetic energy



Internal module collects kinetic energy



Kinetic energy is converted into electricity



Communication module transmits signal



Receiver controls the light

3 Gang Switch Technical Parameters

1. Model No: S113
2. SKU: WS1052S
3. Work Type: Reciprocating work by 86 type lever
4. Power Model: Power generation by mechanical force
5. Work Frequency: 433MHz
6. Number Keys: 3 keys
7. Colour: Silver
8. Lifetime: 100,000 times
9. Distance: 30m(indoor), 80m(outdoor)
10. Waterproof Level: IP65
11. Weight: 80g
12. Certification: CE, RoHS
13. Dimension: L86mm * W86mm * H14mm



Non Dimmable



Press with a finger to produce kinetic energy



Internal module collects kinetic energy



Kinetic energy is converted into electricity



Communication module transmits signal



Receiver controls the light



Dimmable



works with



Press with a finger to produce kinetic energy



Internal module collects kinetic energy



Kinetic energy is converted into electricity



Communication module transmits signal



Receiver controls the light



Non Dimmable



works with



Press with a finger to produce kinetic energy



Internal module collects kinetic energy



Kinetic energy is converted into electricity



Communication module transmits signal



Receiver controls the light

Receiver Technical Parameters

For 500W Non-Dimmable Receiver (RF Only)

1. Model No: K10R
2. SKU: WS1055
3. Power Consumption: <0.1W
4. Working Temperature: -20°C - 55°C
5. Storage Capacity: 10 switch-keys
6. Power Model: AC 100-250V, 50/60 Hz
7. Distance: 30m(indoor), 80m(outdoor)
8. Colour: White
9. Rated Current: 5A
10. Weight: 50g
11. Comm: ASK / 433MHz
12. Certification: CE, RoHS
13. Dimension: L75mm * W52mm * H25mm

Do not place Receiver controller in metal enclosure.

Important note: Isolate power before connecting receiver. Failure to do so can cause electric shock, fire or other hazards.

Receiver Technical Parameters

For 100W Dimmable RF+Wi-Fi Receiver

1. Model No: K10D
2. SKU: WS1056
3. Power Consumption: <0.1W
4. Working Temperature: -20°C - 55°C
5. Storage Capacity: 10 switch-keys
6. Power Model: AC 100-250V, 50/60 Hz
7. Distance: 30m(indoor), 80m(outdoor)
8. Colour: White
9. Rated Current: 1.5A
10. Weight: 50g
11. Comm: ASK / 433MHz / 2.4G Wi-Fi
12. Certification: CE, RoHS
13. Dimension: L75mm * W52mm * H25mm

*Alexa and Google Home compatible only with our Wi-Fi Receiver Module WS1056 & WS1057.

Do not place Receiver controller in metal enclosure.

Important note: Isolate power before connecting receiver. Failure to do so can cause electric shock, fire or other hazards.

Receiver Technical Parameters

For 500W Non-Dimmable RF+Wi-Fi Receiver

1. Model No: K10W
2. SKU: WS1057
3. Power Consumption: <0.1W
4. Working Temperature: -20°C - 55°C
5. Storage Capacity: 10 switch-keys
6. Power Model: AC 100-250V, 50/60 Hz
7. Distance: 30m(indoor), 80m(outdoor)
8. Colour: White
9. Rated Current: 5A
10. Weight: 50g
11. Comm: ASK / 433MHz / 2.4G Wi-Fi
12. Certification: CE, RoHS
13. Dimension: L75mm * W52mm * H25mm

*Alexa and Google Home compatible only with our Wi-Fi Receiver Module WS1056 & WS1057.

Do not place Receiver controller in metal enclosure.

Important note: Isolate power before connecting receiver. Failure to do so can cause electric shock, fire or other hazards.



ECO RANGE

IP65

Non Dimmable

- Press with a finger to produce kinetic energy
- Internal module collects kinetic energy
- Kinetic energy is converted into electricity
- Communication module transmits signal
- Receiver controls the light

1 Gang Kinetic Switch / 500W RF Receiver		
Details	1 Gang Switch	500 RF Receiver
SKU	WJS1061	
Model	S111	K10R
Work type	Reciprocating work by 86 type lever	
Power Model	Power generation by mechanical force	
Lifetime	100,000 times	
Waterproof	IP65	
Power cons.		<0.1W
Working temp.		-20°C - 55°C
Storage capacity		10 switch-keys
Power model		AC 100-250V, 50/60Hz
Rated current		5A
Dimmable		No
Communication	ASK / 433MHz	
Distance	30m(indoor), 80m(outdoor)	
Certification	CE, RoHS	
Weight	80g	50g
Dimensions	86 x 86 x 14 mm	75 x 52 x 25 mm



ECO RANGE

IP65

Dimmable

Wi Fi

works with

- Press with a finger to produce kinetic energy
- Internal module collects kinetic energy
- Kinetic energy is converted into electricity
- Communication module transmits signal
- Receiver controls the light

1 Gang Kinetic Switch / 100W RF+Wi-Fi Receiver		
Details	1 Gang Switch	100W RF Wi-Fi Receiver
SKU	WJS1061	
Model	S111	K10D
Work type	Reciprocating work by 86 type lever	
Power Model	Power generation by mechanical force	
Lifetime	100,000 times	
Waterproof	IP65	
Power cons.		<0.1W
Working temp.		-20°C - 55°C
Storage capacity		10 switch-keys
Power model		AC 100-250V, 50/60Hz
Rated current		1.5A
Dimmable		Yes
Communication	ASK / 433MHz / 2.4GHz Wi-Fi	
Distance	30m(indoor), 80m(outdoor)	
Certification	CE, RoHS	
Weight	80g	50g
Dimensions	86 x 86 x 14 mm	75 x 52 x 25 mm
Works with	Amazon Alexa, Google Home & Assistant	



ECO RANGE

IP65

Non Dimmable

Wi Fi

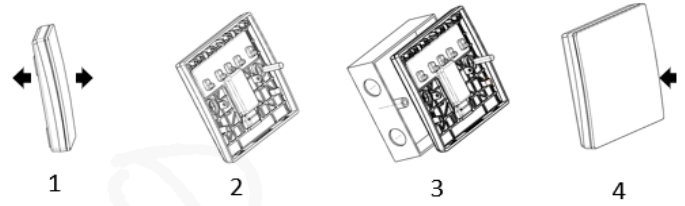
works with

- Press with a finger to produce kinetic energy
- Internal module collects kinetic energy
- Kinetic energy is converted into electricity
- Communication module transmits signal
- Receiver controls the light

1 Gang Kinetic Switch / 500W RF+Wi-Fi Receiver		
Details	1 Gang Switch	500W RF Wi-Fi Receiver
SKU	WJS1062	
Model	S111	K10W
Work type	Reciprocating work by 86 type lever	
Power Model	Power generation by mechanical force	
Lifetime	100,000 times	
Waterproof	IP65	
Power cons.		<0.1W
Working temp.		-20°C - 55°C
Storage capacity		10 switch-keys
Power model		AC 100-250V, 50/60Hz
Rated current		5A
Dimmable		Yes
Communication	ASK / 433MHz / 2.4GHz Wi-Fi	
Distance	30m(indoor), 80m(outdoor)	
Certification	CE, RoHS	
Weight	80g	50g
Dimensions	86 x 86 x 14 mm	75 x 52 x 25 mm
Works with	Amazon Alexa, Google Home & Assistant	

Installation method of stainless steel fixed plate

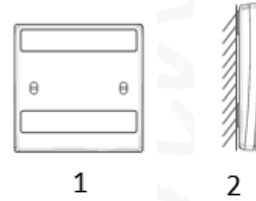
1. Open the switch panel.
2. Fix the base on the wall (expansion screw sleeve is needed) or fixture.
3. Fix it, install the button shell to the base shell.



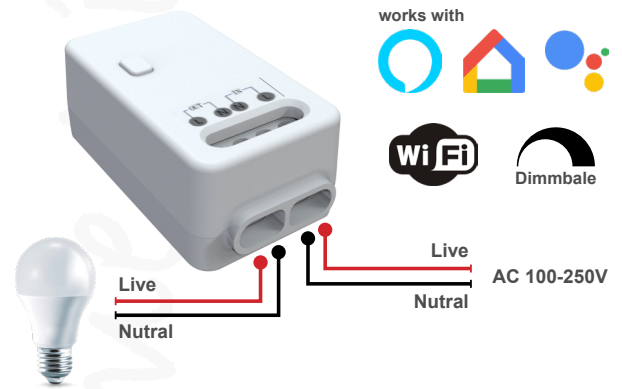
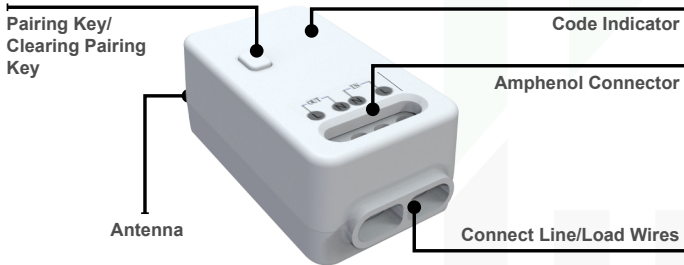
Installation method of Double-sided adhesive tape

1. Paste the double-side adhesive on the back of switch.
2. Clean the wall or glass surface to paste the switch on it.

Important note: There are precision parts inside the switch. When installing, it is strictly prohibited to dismantle the panel



Installation method and Combination Method



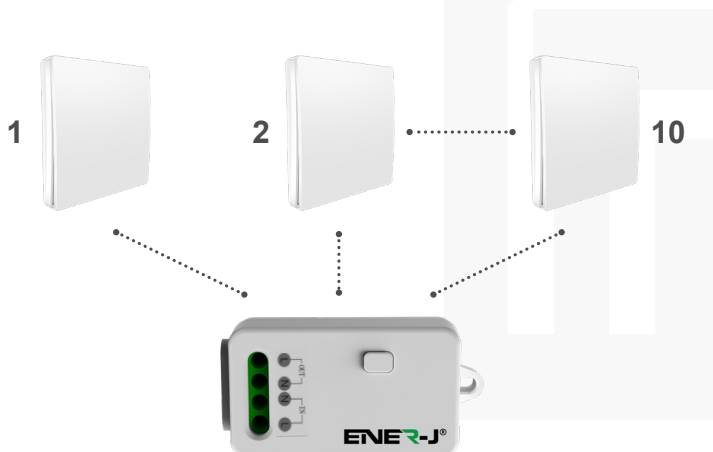
Installation method 1:
Paste with double-side adhesive tape on clean surface.



Installation method 2:
Fix into expansion screw in the wall.

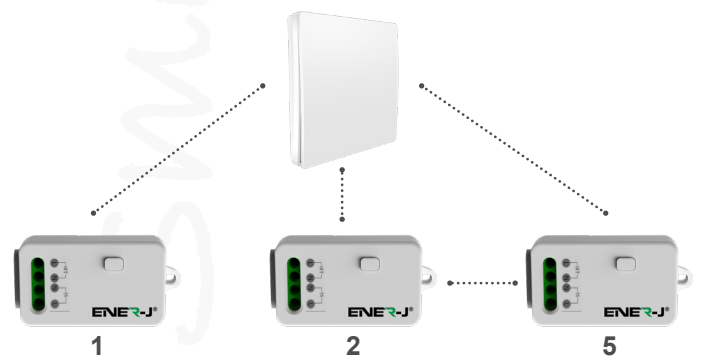


Multi control one:
(Maximum 10 switch keys control one controller).



One control multi:
(One switch key can control 5 controllers).

Important note: Isolate power before connecting receiver. Failure to do so can cause electric shock, fire or other hazards.

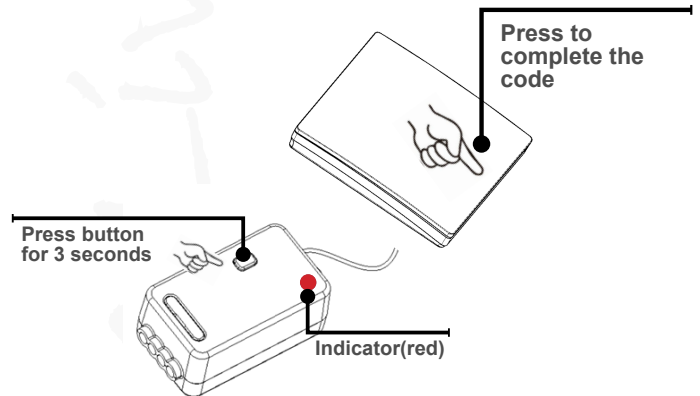


Instruction of Dimming Function

1. K10D controller uses TRIAC components. Supports incandescent lamp, tungsten lamp and mostly all LED lamp which supports TRIAC dimming. If flickering occurs during dimming, we recommend replacing the LED lamp. Segmented dimmers and lamps with dimmers are not supported.
2. This controller can only pair with push button switch: after pairing is successful, quickly press the push button switch 3 times and you will be able adjust lamp brightness. Press the switch once when you reach the level of brightness desired. Also can use mobile APP or Alexa voice control to control brightness.
3. This controller has a brightness memory function. When turn on the lamp again, it maintains the last brightness level. If paired with multiple switches, this controller can memorize the brightness level of each switch.
4. If you didn't press switch key to confirm the brightness, the controller dims from the darkest to brightest for 2 cycles, and will stop dimming when reaching maximum brightness after 2 cycles.

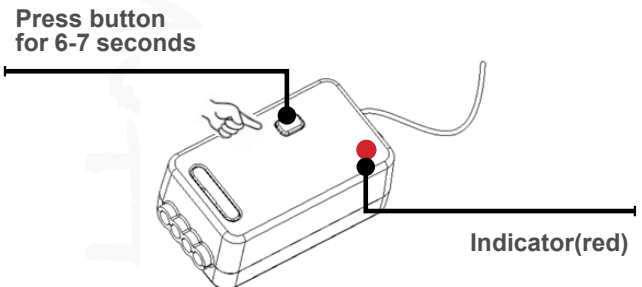
Switch Pairing Method

1. Ensure the receiver controller is connected to 100-250V AC and power is 'on'.
2. Press the function button for 3~5 seconds, (the indicator light will flicker slowly) then release the button to enter the pairing mode.
3. Press the "wireless switch" to be paired, when the indicator light stops flashing, at this time the indicator lights will come on or off with the press of switch, indicating pairing a success.
4. Repeat above steps to add multiple switches. The receiver can store up to 20 switch codes.
5. Repeat this process for each button on Double and Triple switch.



Clear pairing

Press the button for more than 6-7 seconds, the indicator quickly flashes 10 times and at the same time, the relay performs the turn-on/off action quickly, this indicates all recorded codes have been deleted.



FAQ

1. **How to use the item? Is it easy to install?**
Super easy to install. In just 3 steps, you can add or relocate a wireless switch for your house within 5 minutes.
 1. Install the receiver between the lamp to be controlled and the power supply,
 2. Program the receiver and wireless switch,
 3. The wireless switch can be placed where it matters, or carried with you.
2. **If the switch is on and there is a power cut, will the switch still be on when power is restored? If not can the default action be changed?**
The default setting is off, so the switch will not stay on. This can prevent the sudden increase in voltage and current when the power supply is restored from damaging the lamp.
The default setting can be changed by pressing and holding the receiver setting button for 16 seconds, and releasing your finger when the indicator light stays on.
3. **Will it cause signal interference if multiple wireless switches are installed in the home?**
No. The signal between the paired switch and the receiver is independent and encrypted. Will not cause interference.