

EWK 1**Weidmüller Interfaces GmbH & Co. KG**

Postfach 3030

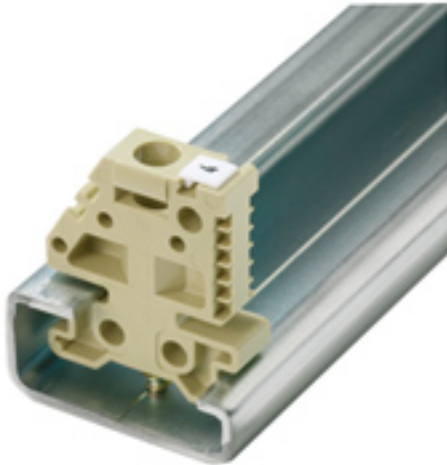
32760 Detmold

Tel. +49 5231 14-0

Fax. +49 5231 14-2083

info@weidmueller.com

www.weidmueller.com

Product image

Weidmüller's range of products includes end brackets that guarantee a permanent, reliable mounting on the terminal rail and prevent sliding. Versions with and without screws are available. The end brackets include marking options, also for group markers, and also a test plug holder.

General ordering data

Version	Accessories, End bracket
Order No.	0206160000
Type	EWK 1
GTIN (EAN)	4008190080020
Qty.	50 pc(s).

EWK 1

Weidmüller Interfaces GmbH & Co. KG

Postfach 3030

32760 Detmold

Tel. +49 5231 14-0

Fax. +49 5231 14-2083

info@weidmueller.com

www.weidmueller.com

Technical data

Dimensions and weights

Depth	31 mm	Depth (inches)	1.22 inch
Height	27 mm	Height (inches)	1.063 inch
Width	9 mm	Width (inches)	0.354 inch
Net weight	4.34 g		

Temperatures

Continuous operating temp., min.	-50 °C	Continuous operating temp., max.	100 °C
----------------------------------	--------	----------------------------------	--------

Material data

Material	Wemid	Colour	beige
UL 94 flammability rating	V-0		

System specifications

Version	For the terminals	Rail	TS 32
---------	-------------------	------	-------

Additional technical data

Installation advice	Direct mounting	Interlock	for screw fixing
Type of mounting	when screwed in		

Conductors for clamping (rated connection)

Tightening torque, max.	1 Nm	Tightening torque, min.	0.5 Nm
-------------------------	------	-------------------------	--------

Dimensions

TS 32 offset	13.5 mm
--------------	---------

General

Installation advice	Direct mounting	Rail	TS 32
---------------------	-----------------	------	-------

Classifications

ETIM 6.0	EC001041	ETIM 7.0	EC001041
ETIM 8.0	EC001041	ECLASS 9.0	27-14-11-35
ECLASS 9.1	27-14-11-35	ECLASS 10.0	27-14-11-35
ECLASS 11.0	27-14-11-35	ECLASS 12.0	27-14-11-35

Approvals

ROHS	Conform
------	---------

Data sheet**EWK 1****Weidmüller Interfaces GmbH & Co. KG**

Postfach 3030

32760 Detmold

Tel. +49 5231 14-0

Fax. +49 5231 14-2083

info@weidmueller.com**Technical data****Downloads**

Engineering Data	CAD data – 04520_EWK_1_DXF.dxf CAD data – STEP	www.weidmueller.com
Engineering Data	WSCAD, Zuken E3.S	
Product Change Notification	Technical Change EN Technical Change DE	
User Documentation	StorageConditionsTerminalBlocks	
Catalogues	Catalogues in PDF-format	
Brochures		