

ACCESSORIES

KEYWORDS: Busbars; Copper; 1,2,3 pole versions; 5, 8, 10, 14, 18 way; Blanks

Consumer Unit and Distribution Board Blanks

Blanks for use in CU consumer units and distribution boards
Designed to cover unused modules
Plastic, 1 module



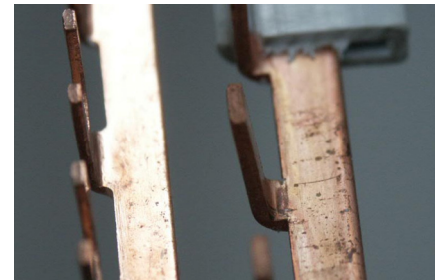
Consumer Unit Padlock

Suitable for locking an MC or MH series MCB in the ON or OFF position
Padlock not supplied

Part Number	Description	Box Quantity
CU Blank	Consumer Unit blank	1
DU Blank	Distribution Board blank	1
PL01	1 pole MCB locking device	1
PL02	2 and 3 pole MCB locking device	1

Busbars

Various sizes of busbar
Allows the option of fitting into the CU enclosures or onto DIN rail
Available in 1 metre lengths or ready cut
1 metre pin type
1 metre fork type
End caps available
1, 2, 3 pole versions
Maximum ratings 63A



Part Number	Description	Box Quantity
BB01	1 pole 1 metre busbar – pin type	1
BB02	2 pole 1 metre busbar – pin type	1
BB03	3 pole 1 metre busbar – pin type	1
BBO1/F	1 pole 1 metre busbar – fork type	1
BBO2/F	2 pole 1 metre busbar – fork type	1
BB03/F	3 pole 1 metre busbar – fork type	1
BB01/E	1 pole busbar end cap	1
BB02/E	2 pole busbar end cap	1
BBO3/E	3 pole busbar end cap	1
BB05	Busbar for CU05 consumer unit	1
BB08	Busbar for CU08 consumer unit	1
BB10	Busbar for CU010 consumer unit	1
BB14	Busbar for CU014 consumer unit	1
BB18	Busbar for CU018 consumer unit	1