

# INCEPTOR® EVO HOUSING

Distinct aluminium designs

IK10

Circular

A Circular fascia allows light to be distributed at an optimum beam angle of 120°.



Eyelid

The Eyelid fascia reduces upward glare, providing greater direction and emphasis of illumination.



Grille

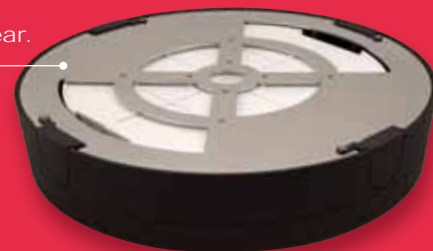
For architectural & design settings the Grille is a perfect fascia which also reduces glare.



Robust metal base plate with access to rear.

Having a robust base plate at the back of the enclosure keeps the luminaire as secure as possible whilst keeping any damage to a minimum.

The PC cover can be locked using the tamper-proof screw. The metal enclosure is also supplied with four cover retaining screws.



The Inceptor Evo is manufactured using high-quality, UV stabilised Polycarbonate with a design that reaches IK08; making it suitable for installations within harsh environments including in direct sunlight.

With removal of the PC rear "skirt", the Evo can be fitted inside our range of metal enclosures increasing robustness to IK Level 10. Four Hex-Head bolts seal the product shut for additional security.

Die-cast aluminium body

A die cast aluminium body ensures a high grade surface finish and a solid body to keep the bulkhead protected from any damage that may occur, especially in commercial areas.



Four side entry points

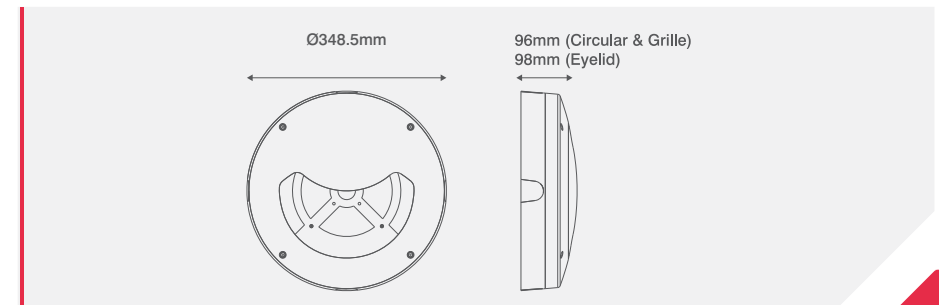
Offering the same cable entry locations as the Evo's polycarbonate main body; with the four side entries sealed with removable inserts.

IK10 Metal Housings For Inceptor® Evo

AVAILABLE FINISHES



| CODE     | DESCRIPTION                   |
|----------|-------------------------------|
| OV9001BK | IK10 Circular Housing - Black |
| OV9002BK | IK10 Eyelid Housing - Black   |
| OV9003BK | IK10 Grille Housing - Black   |



PRODUCT APPROVALS

Suitable for use with standard range of Inceptor® Evo bulkheads (Not Supplied)

BS EN 62262

